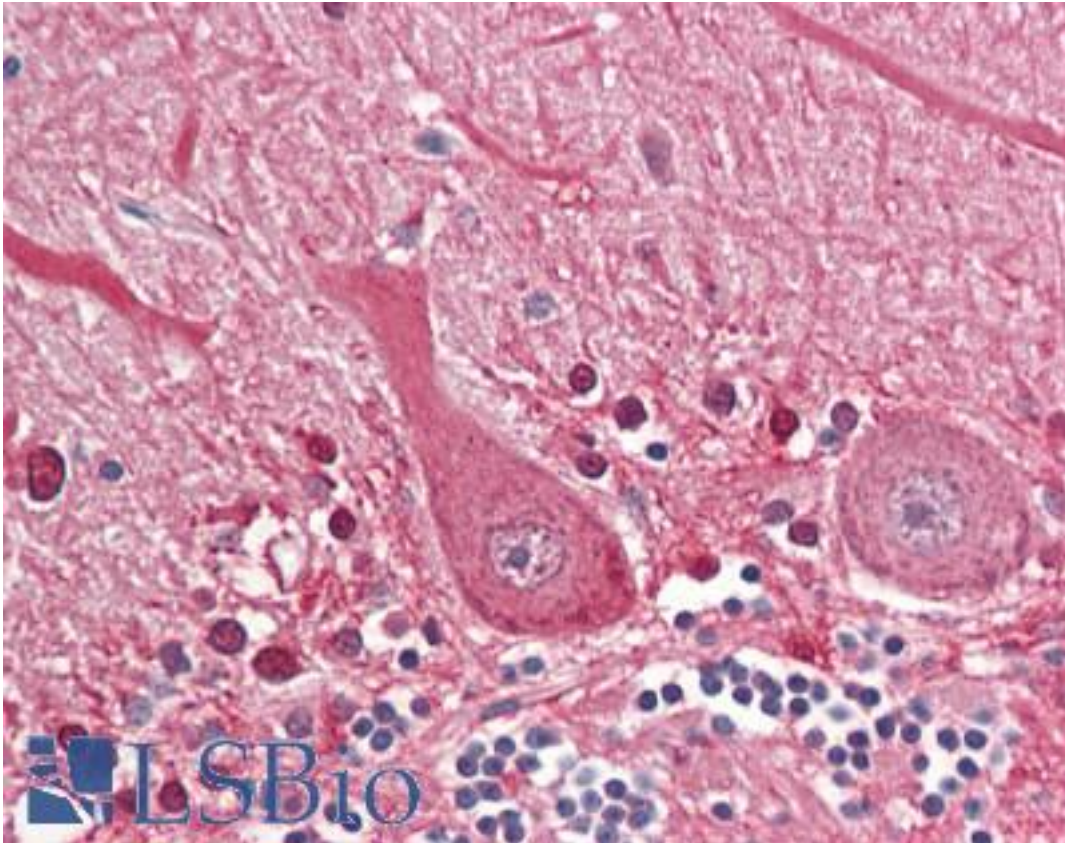


SEPT4 / Septin 4 Goat anti-Human Polyclonal (Internal) Antibody - LS-B8346 - LSBio

CatalogID:	LS-B8346
Validation:	This antibody replaces catalog number LS-C139660. It has been validated for use in the following assays: IHC-P.
Target:	septin 4 (SEPT4)
Synonyms:	SEPT4 Antibody, Brain protein H5 Antibody, ARTS Antibody, BRADEION Antibody, CE5B3 Antibody, Cerebral protein 7 Antibody, H5 Antibody, HCDCREL-2 Antibody, Peanut-like 2 (Drosophila) Antibody, PNUTL2 Antibody, SEP4 Antibody, Septin 4 Antibody, Bradeion beta Antibody, CE5B3 beta Antibody, Hucep-7 Antibody, MART Antibody, Peanut-like protein 2 Antibody, Septin-4 Antibody, Septin-M Antibody
Family / Subfamily:	Apoptosis
Host	SEPT4 antibody was produced in Goat
Clonality:	Polyclonal
Immunogen Species:	SEPT4 / Septin 4 antibody was raised against Human
Antigen Type:	Synthetic peptide
Immunogen:	SEPT4 / Septin 4 antibody was raised against synthetic peptide C-RNKLTRESGTD from an internal region of human SEPT4 / Septin 4 (NP_004565.1; NP_536341.1, NP_001185642.1). Percent identity by BLAST analysis: Human, Gorilla, Orangutan, Gibbon, Monkey, Mouse, Rat, Hamster, Elephant, Panda, Dog, Bat, Horse, Rabbit, Pig, Platypus, Xenopus, Stickleback, Pufferfish, Zebrafish (100%); Marmoset, Bovine (91%).
Specificity:	Human SEPT4 / Septin 4. This antibody is expected to recognize isoform 1 (NP_004565.1), 3 (NP_536341.1) and 4 (NP_001185642.1). Amino acid numbering in name refers to NP_004565.1 sequence.
Epitope:	Internal
Reactivity:	Human, Gorilla, Orangutan, Gibbon, Mouse, Rat, Bat, Dog, Hamster, Horse, Pig, Rabbit, Xenopus, Zebrafish
Predicted Reactivity:	Monkey, Bovine
Purification:	Immunoaffinity purified
Presentation:	Tris-buffered saline, pH 7.3, 0.5% BSA, 0.02% sodium azide
Recommended Storage:	Store at -20°C. Minimize freezing and thawing.
Usage Summary:	Peptide ELISA: antibody detection limit dilution 1:64000. Western blot: Approx 50kD band observed in Human and Mouse Heart lysates (calculated MW of 55.1kD according to NP_004565.1 and 53.0kD according to NP_536341). Recommended concentration: 1-3 ug/ml.
Uses:	IHC - Paraffin (3.75 µg/ml), Western blot (1 - 3 µg/ml), ELISA (1:64000) (Optimal dilution to be determined by the researcher)
Size:	50 µg
Concentration:	0.5 mg/ml

Immunohistochemistry Image:



Anti-SEPT4 / Septin-4 antibody IHC of human brain, cerebellum. Immunohistochemistry of formalin-fixed, paraffin-embedded tissue after heat-induced antigen retrieval. Antibody LS-B8346 dilution 3.75 ug/ml.

Western Blot Image:



SEPT4 antibody (1 ug/ml) staining of Human Heart lysate (35 ug protein/ml in RIPA buffer). Primary incubation was 1 hour. Detected by chemiluminescence.

Requested From:

Japan

Laboratory Reagent For In Vitro Research Use Only

Not for resale without prior written consent from LifeSpan BioSciences, Inc.

Created on 9/24/2014

© 2014 LifeSpan BioSciences