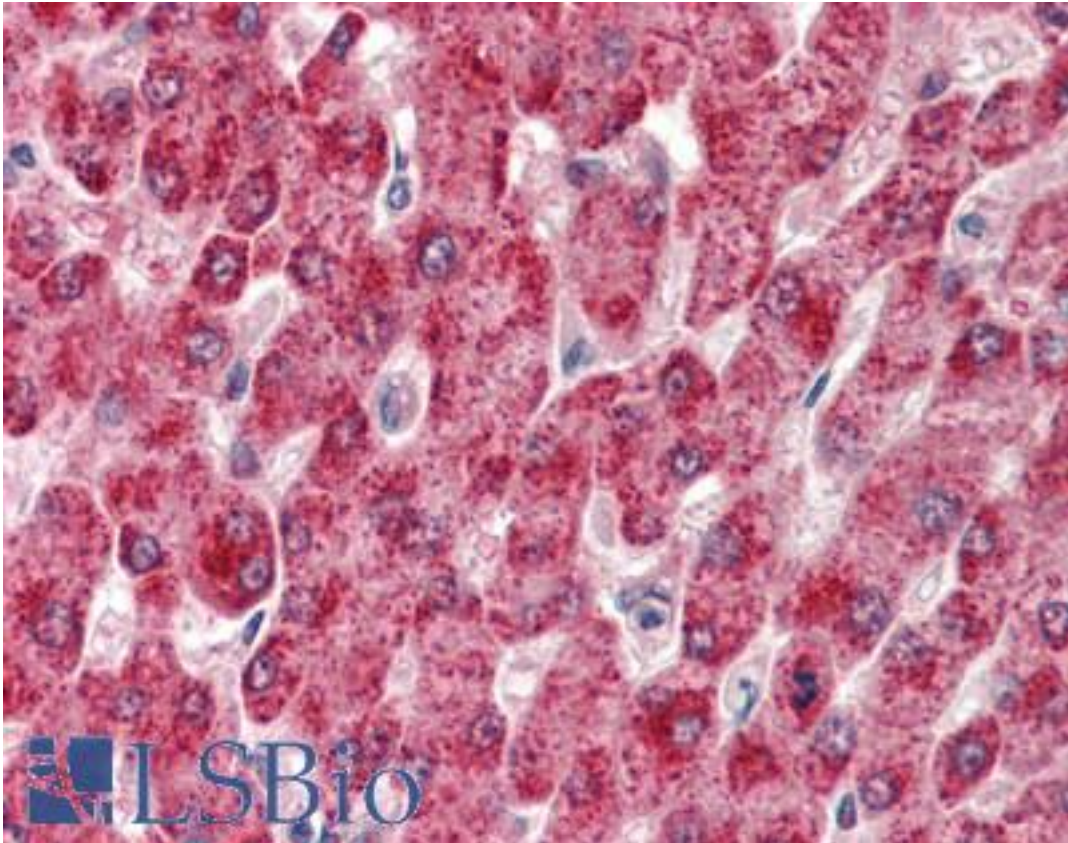


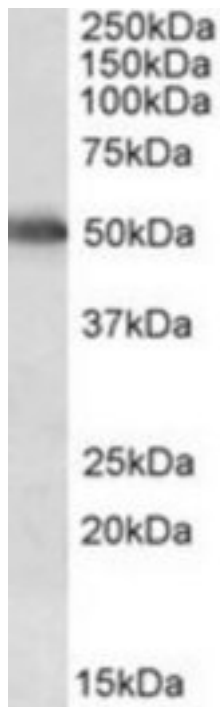
CYP2E1 Goat anti-Human Polyclonal (Internal) Antibody - LS-B8344 - LSBio	
CatalogID:	LS-B8344
Validation:	This antibody replaces catalog number LS-C139647. It has been validated for use in the following assays: IHC-P.
Target:	cytochrome P450, family 2, subfamily E, polypeptide 1 (CYP2E1)
Synonyms:	CYP2E1 Antibody, 4-nitrophenol 2-hydroxylase Antibody, CPE1 Antibody, Cytochrome p450 Ile1 Antibody, Cytochrome P450-J Antibody, p450C2E Antibody, p450-J Antibody, CYP2E Antibody, CYP1IE1 Antibody, Cytochrome P450 2E1 Antibody
Family / Subfamily:	Cytochrome P450 / not assigned-Cytochrome P450
Host	CYP2E1 antibody was produced in Goat
Clonality:	Polyclonal
Immunogen Species:	CYP2E1 antibody was raised against Human
Antigen Type:	Synthetic peptide
Immunogen:	CYP2E1 antibody was raised against synthetic peptide C-RKVIKNVAEVK from an internal region of human CYP2E1 (NP_000764.1). Percent identity by BLAST analysis: Human, Gorilla, Orangutan, Gibbon (100%); Monkey, Marmoset, Cat, Rabbit, Trichina worm (82%).
Specificity:	Human CYP2E1.
Epitope:	Internal
Reactivity:	Human, Gorilla, Orangutan, Gibbon
Purification:	Immunoaffinity purified
Presentation:	Tris-buffered saline, pH 7.3, 0.5% BSA, 0.02% sodium azide
Recommended Storage:	Store at -20°C. Minimize freezing and thawing.
Usage Summary:	Peptide ELISA: antibody detection limit dilution 1:32000. Western blot: Approx 50kD band observed in Human Liver lysates (calculated MW of 56.8kD according to NP_000764.1). Recommended concentration: 0.05-0.2 ug/ml.
Uses:	IHC - Paraffin (3.75 µg/ml), Western blot (0.05 - 0.2 µg/ml), ELISA (1:32000) (Optimal dilution to be determined by the researcher)
Size:	50 µg
Concentration:	0.5 mg/ml

Immunohistochemistry Image:



Anti-CYP2E1 antibody IHC of human liver. Immunohistochemistry of formalin-fixed, paraffin-embedded tissue after heat-induced antigen retrieval. Antibody LS-B8344 dilution 3.75 ug/ml.

Western Blot Image:



CYP2E1 antibody (0.05 ug/ml) staining of Human Liver lysate (35 ug protein/ml in RIPA buffer). Primary incubation was 1 hour. Detected by chemiluminescence.

Requested From:

Japan

Laboratory Reagent For In Vitro Research Use Only

Not for resale without prior written consent from LifeSpan BioSciences, Inc.

Created on 9/24/2014

© 2014 LifeSpan BioSciences