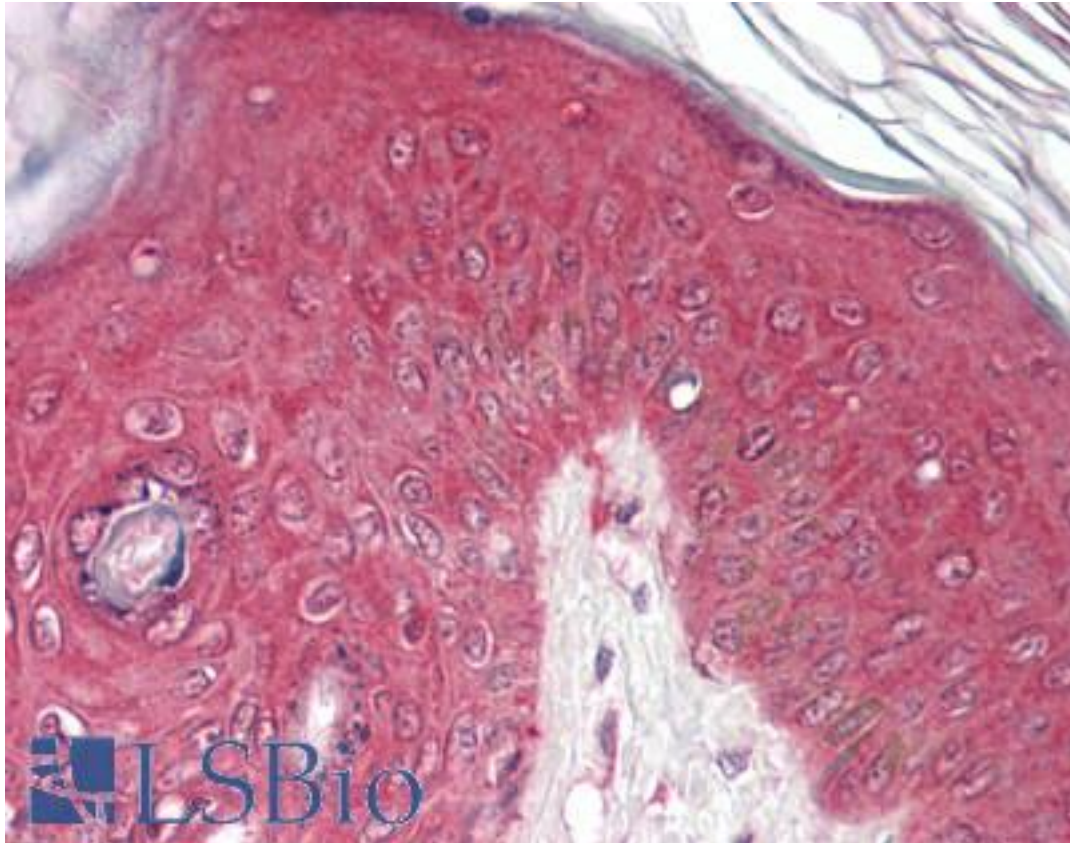


PSMB4 Goat anti-Human Polyclonal (Internal) Antibody - LS-B8342 - LSBio

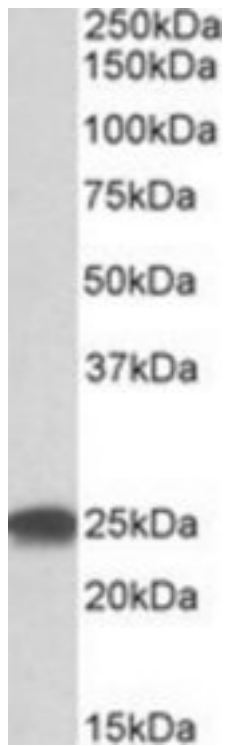
<b>CatalogID:</b>	LS-B8342
<b>Validation:</b>	This antibody replaces catalog number LS-C139701. It has been validated for use in the following assays: IHC-P.
<b>Target:</b>	proteasome (prosome, macropain) subunit, beta type, 4 (PSMB4)
<b>Synonyms:</b>	PSMB4 Antibody, 26 kDa prosomal protein Antibody, HsN3 Antibody, HsBPROS26 Antibody, Proteasome beta chain Antibody, Proteasome chain 3 Antibody, Proteasome subunit beta type-4 Antibody, Proteasome beta chain 4 Antibody, Proteasome subunit HsN3 Antibody, PROS-26 Antibody, HN3 Antibody, Macropain beta chain Antibody, PROS26 Antibody
<b>Family / Subfamily:</b>	Protease Non Catalytic / Threonine T1
<b>Host</b>	PSMB4 antibody was produced in Goat
<b>Clonality:</b>	Polyclonal
<b>Immunogen Species:</b>	PSMB4 antibody was raised against Human
<b>Antigen Type:</b>	Synthetic peptide
<b>Immunogen:</b>	PSMB4 antibody was raised against synthetic peptide C-QIATVTEKGVE from an internal region of human PSMB4 (NP_002787.2). Percent identity by BLAST analysis: Human, Gorilla, Gibbon, Baboon, Monkey, Galago, Marmoset, Mouse, Hamster, Panda, Dog, Bat, Bovine, Rabbit, Horse, Pig (100%); Rat, Elephant, Opossum, Platypus (91%); Turkey, Xenopus (82%).
<b>Specificity:</b>	Human PSMB4.
<b>Epitope:</b>	Internal
<b>Reactivity:</b>	Human, Gorilla, Gibbon, Monkey, Mouse, Bat, Bovine, Dog, Hamster, Horse, Pig, Rabbit
<b>Predicted Reactivity:</b>	Rat
<b>Purification:</b>	Immunoaffinity purified
<b>Presentation:</b>	Tris-buffered saline, pH 7.3, 0.5% BSA, 0.02% sodium azide
<b>Recommended Storage:</b>	Store at -20°C. Minimize freezing and thawing.
<b>Usage Summary:</b>	Peptide ELISA: antibody detection limit dilution 1:16000. Western blot: Approx 25kD band observed in lysates of cell lines HEK293, HeLa, Jurkat and K562 (calculated MW of the mature protein 24.3kD according to aa46-264 of NP_002787.2). Recommended concentration: 0.3-1 ug/ml.
<b>Uses:</b>	IHC - Paraffin (3.75 µg/ml), Western blot (0.3 - 1 µg/ml), ELISA (1:16000) (Optimal dilution to be determined by the researcher)
<b>Size:</b>	50 µg
<b>Concentration:</b>	0.5 mg/ml

**Immunohistochemistry Image:**



Anti-PSMB4 antibody IHC of human skin. Immunohistochemistry of formalin-fixed, paraffin-embedded tissue after heat-induced antigen retrieval. Antibody LS-B8342 dilution 3.75 ug/ml.

**Western Blot Image:**



PSMB4 antibody (0.3 ug/ml) staining of HEK293 lysate (35 ug protein/ml in RIPA buffer). Primary incubation was 1 hour. Detected by chemiluminescence.

**Requested From:**

Japan

Laboratory Reagent For In Vitro Research Use Only

Not for resale without prior written consent from LifeSpan BioSciences, Inc.

Created on 9/24/2014

© 2014 LifeSpan BioSciences