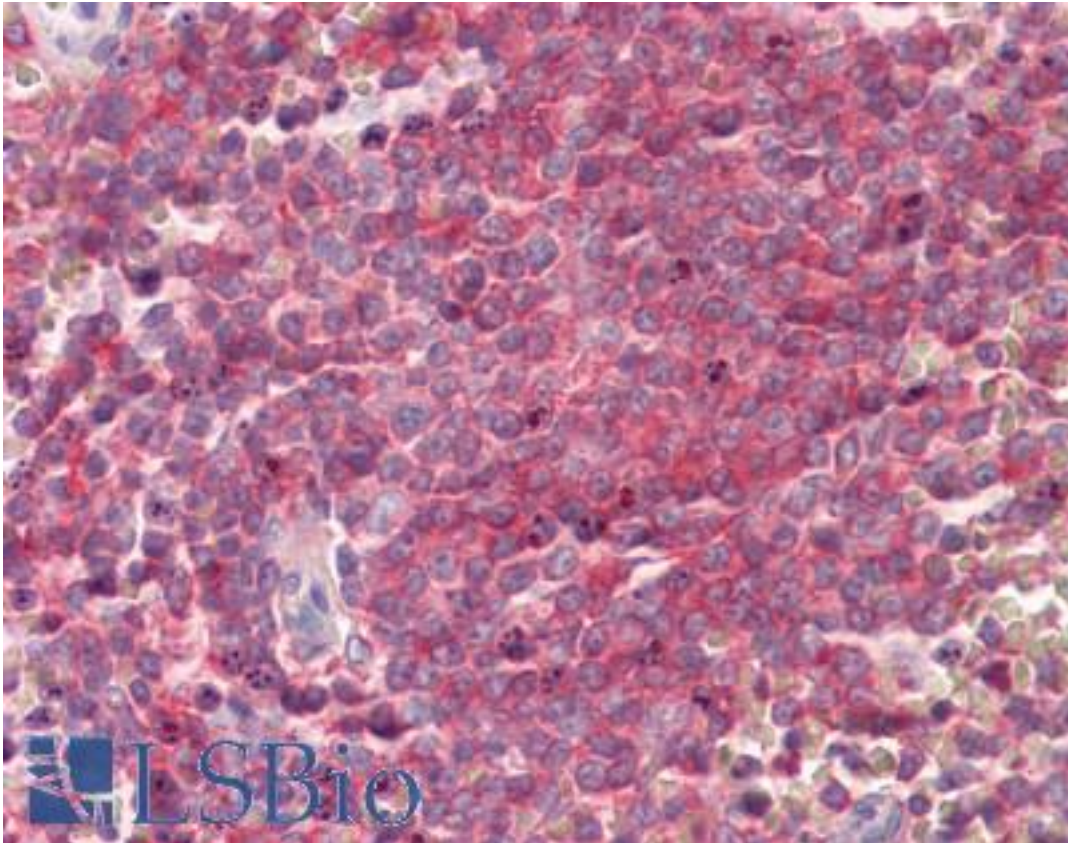


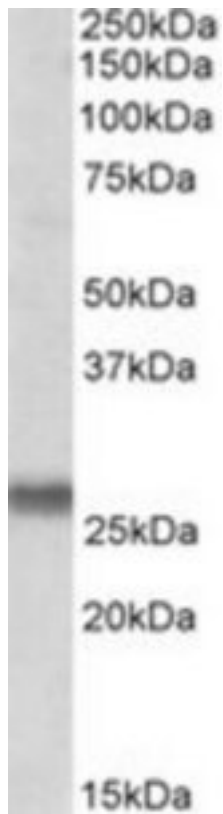
SNAP23 / SNAP-23 Goat anti-Human Polyclonal (Internal) Antibody - LS-B8340 - LSBio	
CatalogID:	LS-B8340
Validation:	This antibody replaces catalog number LS-C139615. It has been validated for use in the following assays: IHC-P.
Target:	synaptosomal-associated protein, 23kDa (SNAP23)
Synonyms:	SNAP23 Antibody, HsT17016 Antibody, SNAP23B Antibody, SNAP-23 Antibody, SNAP23A Antibody
Family / Subfamily:	SNAP-25 / Not assigned-Other
Host	SNAP23 antibody was produced in Goat
Clonality:	Polyclonal
Immunogen Species:	SNAP23 / SNAP-23 antibody was raised against Human
Antigen Type:	Synthetic peptide
Immunogen:	SNAP23 / SNAP-23 antibody was raised against synthetic peptide C-QIKRITDKAD from an internal region of human SNAP23 (NP_003816.2; NP_570710.1). Percent identity by BLAST analysis: Human, Gorilla, Orangutan, Gibbon, Monkey (100%); Hamster, Elephant, Bat, Bovine, Horse, Pig, Zebrafish, Phytophthora (80%).
Specificity:	Human SNAP23. This antibody is expected to recognize both reported isoforms (NP_003816.2; NP_570710.1).
Epitope:	Internal
Reactivity:	Human, Gorilla, Orangutan, Gibbon, Monkey
Purification:	Immunoaffinity purified
Presentation:	Tris-buffered saline, pH 7.3, 0.5% BSA, 0.02% sodium azide
Recommended Storage:	Store at -20°C. Minimize freezing and thawing.
Usage Summary:	Peptide ELISA: antibody detection limit dilution 1:8000. Western blot: Approx 26kD band observed in Human Placenta lysates (calculated MW of 23.4kD according to NP_003816.2). The observed molecular weight corresponds to earlier findings with different antibodies from other commercial sources. Recommended concentration: 0.1-0.3 ug/ml.
Uses:	IHC - Paraffin (3.75 µg/ml), Western blot (0.1 - 0.3 µg/ml), ELISA (1:8000) (Optimal dilution to be determined by the researcher)
Size:	50 µg
Concentration:	0.5 mg/ml

Immunohistochemistry Image:



Anti-SNAP23 antibody IHC of human spleen. Immunohistochemistry of formalin-fixed, paraffin-embedded tissue after heat-induced antigen retrieval. Antibody LS-B8340 dilution 3.75 ug/ml.

Western Blot Image:



SNAP23 antibody (0.1 ug/ml) staining of Human Placenta lysate (35 ug protein/ml in RIPA buffer). Primary incubation was 1 hour. Detected by chemiluminescence.

Requested From:

Japan

Laboratory Reagent For In Vitro Research Use Only

Not for resale without prior written consent from LifeSpan BioSciences, Inc.

Created on 9/24/2014

© 2014 LifeSpan BioSciences