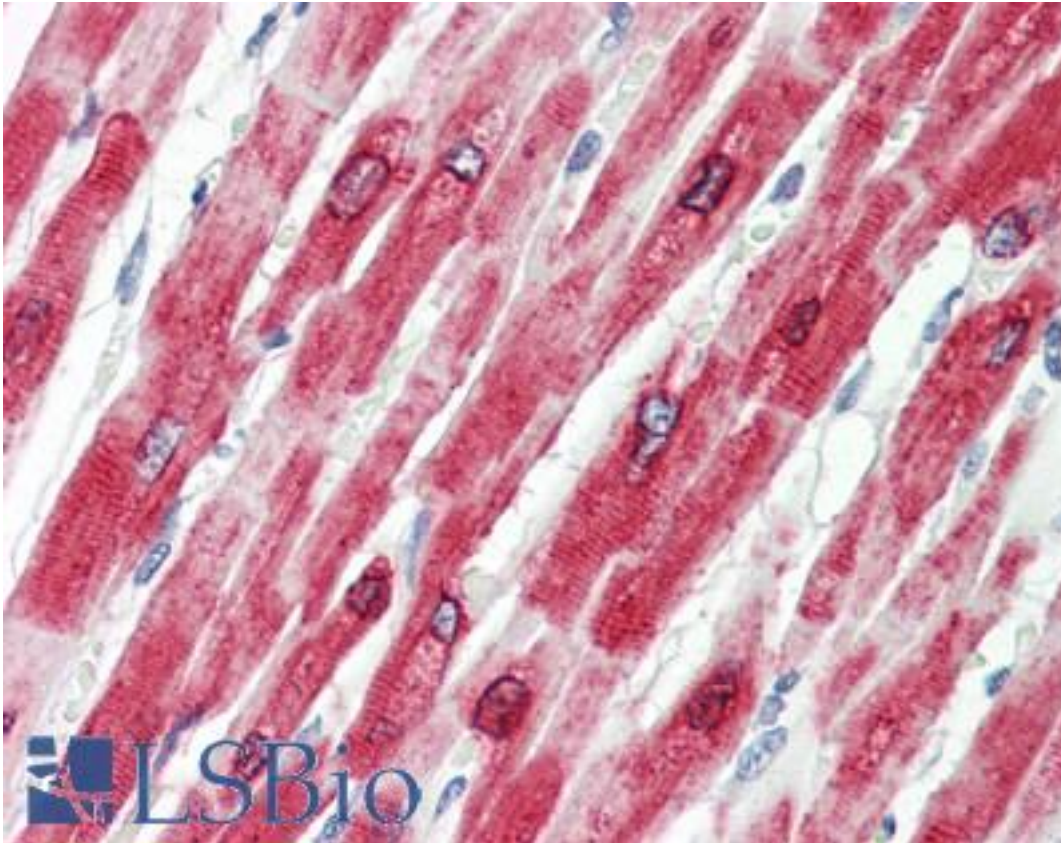


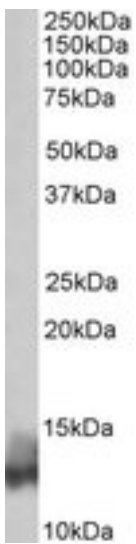
PLN / Phospholamban Goat anti-Human Polyclonal (N-Terminus) Antibody - LS-B8337 - LSBio	
CatalogID:	LS-B8337
Validation:	This antibody replaces catalog number LS-C139610. It has been validated for use in the following assays: IHC-P.
Target:	phospholamban (PLN)
Synonyms:	PLN Antibody, CMD1P Antibody, CMH18 Antibody, PLB Antibody, Cardiac phospholamban Antibody, Phospholamban Antibody
Host	PLN antibody was produced in Goat
Clonality:	Polyclonal
Immunogen Species:	PLN / Phospholamban antibody was raised against Human
Antigen Type:	Synthetic peptide
Immunogen:	PLN / Phospholamban antibody was raised against synthetic peptide KVQYLTRSAIRR-C from the N-terminus of human PLN / Phospholamban (NP_002658.1). Percent identity by BLAST analysis: Human, Monkey, Marmoset, Mouse, Rat, Panda, Bat, Bovine, Dog, Horse, Rabbit, Pig, Opossum (100%); Gorilla, Gibbon, Elephant (92%); Turkey, Chicken, Platypus, Lizard (83%).
Specificity:	Human PLN / Phospholamban.
Epitope:	N-Terminus
Reactivity:	Human, Monkey, Mouse, Rat, Bat, Bovine, Dog, Horse, Pig, Rabbit
Predicted Reactivity:	Gorilla, Gibbon
Purification:	Immunoaffinity purified
Presentation:	Tris-buffered saline, pH 7.3, 0.5% BSA, 0.02% sodium azide
Recommended Storage:	Store at -20°C. Minimize freezing and thawing.
Usage Summary:	Peptide ELISA: antibody detection limit dilution 1:8000. Western blot: Approx 13kD band observed in Human and Rat Heart lysates (calculated MW of 6.11kD according to NP_002658.1). Recommended concentration: 0.01-0.03 ug/ml.
Uses:	IHC - Paraffin (3.75 µg/ml), Western blot (0.01 - 0.03 µg/ml), ELISA (1:8000) (Optimal dilution to be determined by the researcher)
Size:	50 µg
Concentration:	0.5 mg/ml

Immunohistochemistry Image:



Anti-PLN / Phospholamban antibody IHC of human heart. Immunohistochemistry of formalin-fixed, paraffin-embedded tissue after heat-induced antigen retrieval. Antibody LS-B8337 dilution 3.75 ug/ml.

Western Blot Image:



PLN antibody (0.03 ug/ml) staining of Human Heart lysate (35 ug protein/ml in RIPA buffer). Primary incubation was 1 hour. Detected by chemiluminescence.

Requested From:

Japan

Laboratory Reagent For In Vitro Research Use Only

Not for resale without prior written consent from LifeSpan BioSciences, Inc.

Created on 9/24/2014

© 2014 LifeSpan BioSciences