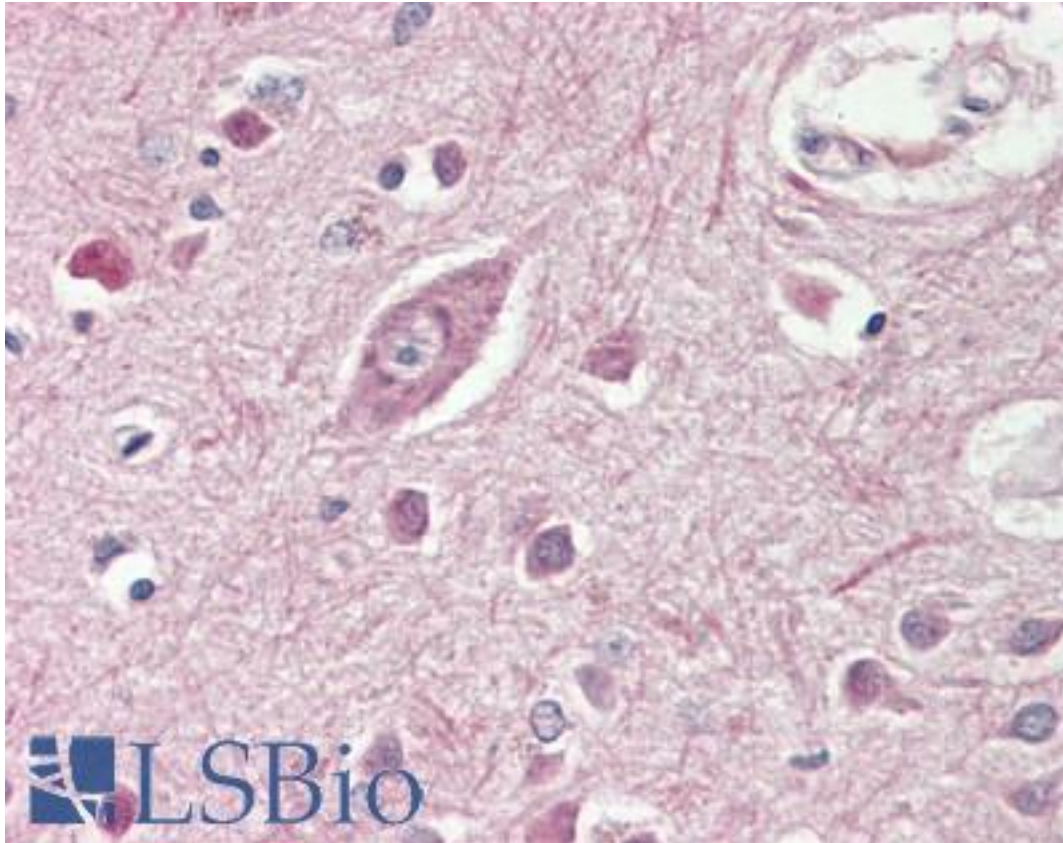


**GRM2 / MGLUR2 Goat anti-Human Polyclonal (Internal) Antibody - LS-B8336 - LSBio**

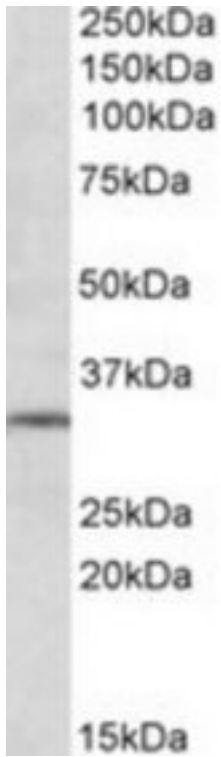
<b>CatalogID:</b>	LS-B8336
<b>Validation:</b>	This antibody replaces catalog number LS-C139607. It has been validated for use in the following assays: IHC-P.
<b>Target:</b>	glutamate receptor, metabotropic 2 (GRM2)
<b>Synonyms:</b>	GRM2 Antibody, Glutamate receptor homolog Antibody, GPRC1B Antibody, MGLu2 Antibody, Metabotropic Antibody, GLUR2 Antibody, MGLUR2 Antibody
<b>Family / Subfamily:</b>	GPCR / Metabotropic glutamate
<b>Host</b>	GRM2 antibody was produced in Goat
<b>Clonality:</b>	Polyclonal
<b>Immunogen Species:</b>	GRM2 / MGLUR2 antibody was raised against Human
<b>Antigen Type:</b>	Synthetic peptide
<b>Immunogen:</b>	GRM2 / MGLUR2 antibody was raised against synthetic peptide C-KETAPERREV from an internal region of human GRM2 / MGLUR2 (NP_000830.2; NP_001123535.1). Percent identity by BLAST analysis: Human, Chimpanzee, Gorilla, Gibbon, Monkey, Marmoset, Mouse, Rat, Hamster, Elephant, Panda, Bovine, Dog, Bat, Horse, Rabbit (100%); Platypus (90%); Mosquito, Sea anemone (80%).
<b>Specificity:</b>	Human GRM2 / MGLUR2. This antibody is expected to recognize both isoforms (NP_000830.2; NP_001123535.1).
<b>Epitope:</b>	Internal
<b>Reactivity:</b>	Human, Chimpanzee, Gorilla, Gibbon, Monkey, Mouse, Rat, Bat, Bovine, Dog, Hamster, Horse, Rabbit
<b>Purification:</b>	Immunoaffinity purified
<b>Presentation:</b>	Tris-buffered saline, pH 7.3, 0.5% BSA, 0.02% sodium azide
<b>Recommended Storage:</b>	Store at -20°C. Minimize freezing and thawing.
<b>Usage Summary:</b>	Peptide ELISA: antibody detection limit dilution 1:16000. Western blot: Approx 30kD band observed in Human Brain (Hippocampus) lysates (calculated MW of 27.5kD according to NP_001123535.1). Recommended concentration: 1-3 ug/ml.
<b>Uses:</b>	IHC - Paraffin (3.75 µg/ml), Western blot (1 - 3 µg/ml), ELISA (1:16000) (Optimal dilution to be determined by the researcher)
<b>Size:</b>	50 µg
<b>Concentration:</b>	0.5 mg/ml

**Immunohistochemistry Image:**



Anti-MGLUR2 / GLUR2 antibody IHC of human brain, cortex. Immunohistochemistry of formalin-fixed, paraffin-embedded tissue after heat-induced antigen retrieval. Antibody LS-B8336 dilution 3.75 ug/ml.

**Western Blot Image:**



GRM2 antibody (1 ug/ml) staining of Human Hippocampus lysate (35 ug protein/ml in RIPA buffer). Primary incubation was 1 hour. Detected by chemiluminescence.

**Requested From:**

Japan

Laboratory Reagent For In Vitro Research Use Only

Not for resale without prior written consent from LifeSpan BioSciences, Inc.

Created on 9/24/2014

© 2014 LifeSpan BioSciences