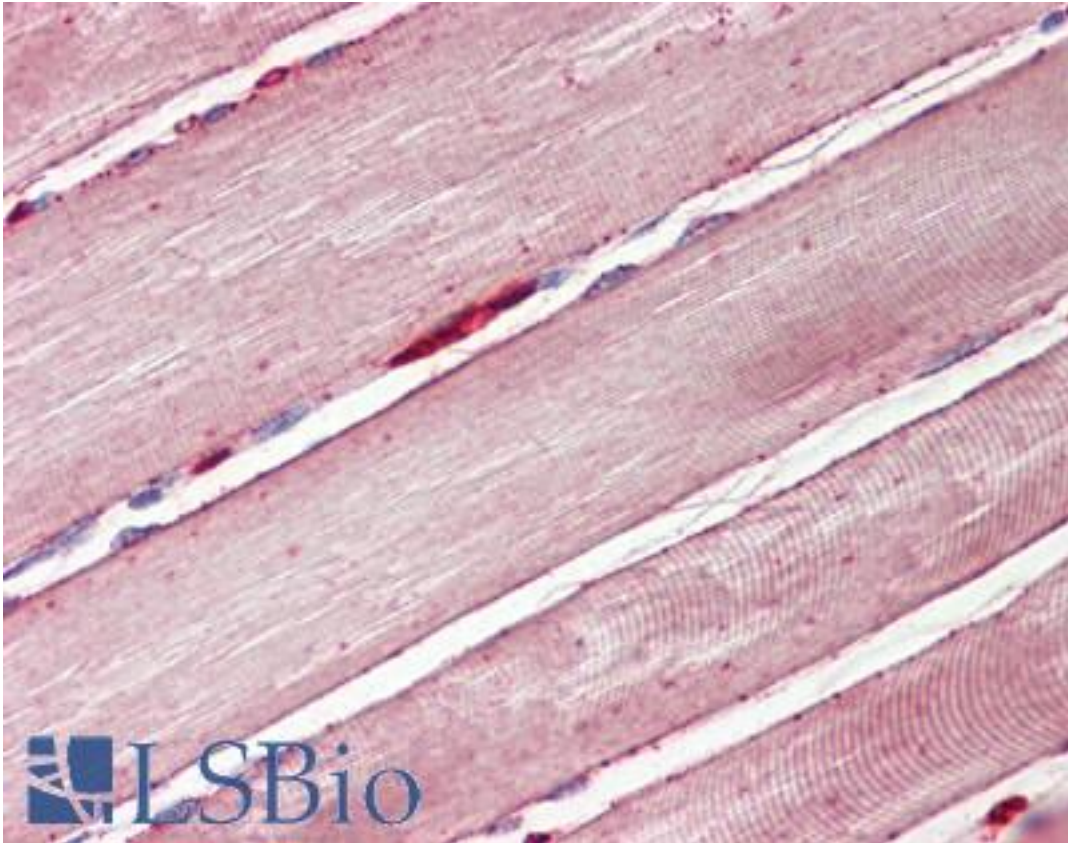


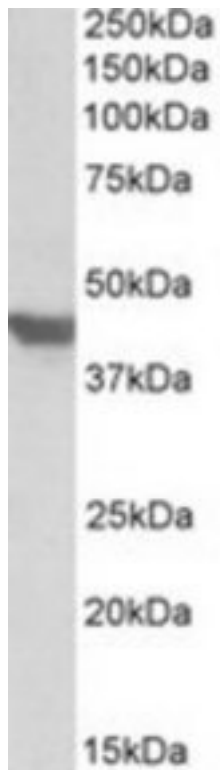
SLC2A4 / GLUT4 / GLUT-4 Goat anti-Human Polyclonal (C-Terminus) Antibody - LS-B8335 - LSBio	
CatalogID:	LS-B8335
Validation:	This antibody replaces catalog number LS-C139596. It has been validated for use in the following assays: IHC-P.
Target:	solute carrier family 2 (facilitated glucose transporter), member 4 (SLC2A4)
Synonyms:	SLC2A4 Antibody, Glucose transporter 4 Antibody, Glucose transporter GLUT4 Antibody, GLUT4 Antibody, GLUT-4 Antibody
Family / Subfamily:	Transporter / Sugar transporter
Host	SLC2A4 antibody was produced in Goat
Clonality:	Polyclonal
Immunogen Species:	SLC2A4 / GLUT4 / GLUT-4 antibody was raised against Human
Antigen Type:	Synthetic peptide
Immunogen:	SLC2A4 / GLUT4 / GLUT-4 antibody was raised against synthetic peptide C-TELEYLGPDEND from the C-terminus of human SLC2A4 / GLUT4 (NP_001033.1). Percent identity by BLAST analysis: Human, Gorilla, Gibbon, Monkey, Mouse, Rat, Hamster, Elephant, Panda, Bat, Rabbit, Horse, Pig, Opossum (100%); Bovine (92%).
Specificity:	Human SLC2A4 / GLUT4.
Epitope:	C-Terminus
Reactivity:	Human, Gorilla, Gibbon, Monkey, Mouse, Rat, Bat, Hamster, Horse, Pig, Rabbit
Predicted Reactivity:	Bovine
Purification:	Immunoaffinity purified
Presentation:	Tris-buffered saline, pH 7.3, 0.5% BSA, 0.02% sodium azide
Recommended Storage:	Store at -20°C. Minimize freezing and thawing.
Usage Summary:	Peptide ELISA: antibody detection limit dilution 1:16000. Western blot: Approx 45kD band observed in Mouse and Rat Heart lysates (calculated MW of 54.8kD according to Human NP_001033.1 and Mouse NP_033230.2). The observed molecular weight corresponds to earlier findings in literature with different antibodies (Fischer et al, J Biol Chem. 1997 Mar 14;272(11):7085-92.; PMID: 9054401). Recommended concentration: 0.3-1 ug/ml.
Uses:	IHC - Paraffin (3.75 µg/ml), Western blot (0.3 - 1 µg/ml), ELISA (1:16000) (Optimal dilution to be determined by the researcher)
Size:	50 µg
Concentration:	0.5 mg/ml

Immunohistochemistry Image:



Anti-GLUT4 antibody IHC of human skeletal muscle. Immunohistochemistry of formalin-fixed, paraffin-embedded tissue after heat-induced antigen retrieval. Antibody LS-B8335 dilution 3.75 ug/ml.

Western Blot Image:



SLC2A4 antibody (1 ug/ml) staining of Mouse Heart lysate (35 ug protein/ml in RIPA buffer). Primary incubation was 1 hour. Detected by chemiluminescence.

Requested From:

Japan

Laboratory Reagent For In Vitro Research Use Only

Not for resale without prior written consent from LifeSpan BioSciences, Inc.

Created on 9/24/2014

© 2014 LifeSpan BioSciences