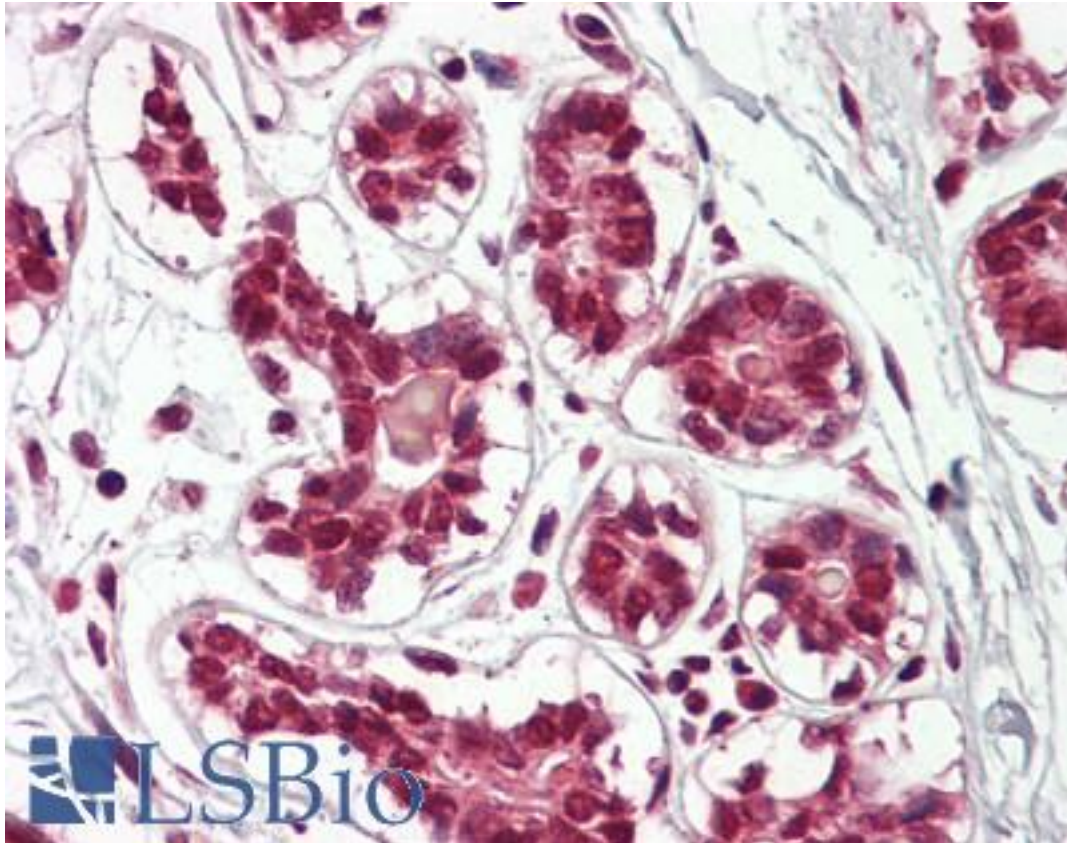


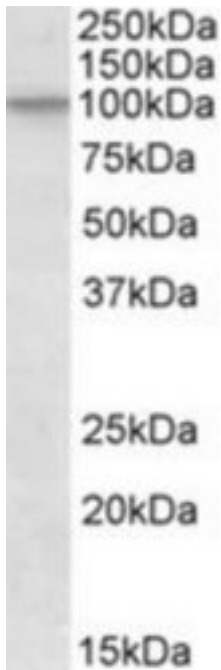
CUL2 / Cullin 2 Goat anti-Human Polyclonal (C-Terminus) Antibody - LS-B8334 - LSBio	
CatalogID:	LS-B8334
Validation:	This antibody replaces catalog number LS-C113001. It has been validated for use in the following assays: IHC-P.
Target:	cullin 2 (CUL2)
Synonyms:	CUL2 Antibody, Cullin homolog 2 Antibody, CUL-2 Antibody, Cullin 2 Antibody, Cullin-2 Antibody
Host	CUL2 antibody was produced in Goat
Clonality:	Polyclonal
Immunogen Species:	CUL2 / Cullin 2 antibody was raised against Human
Antigen Type:	Synthetic peptide
Immunogen:	CUL2 / Cullin 2 antibody was raised against synthetic peptide C-QYIERSQASADE from the C-terminus of human CUL2 / Cullin 2 (NP_003582.2). Percent identity by BLAST analysis: Human, Gorilla, Orangutan, Monkey, Marmoset, Mouse, Rat, Elephant, Panda, Dog, Bovine, Horse, Rabbit, Pig, Opossum, Turkey, Chicken, Platypus, Lizard, Xenopus (100%); Hamster, Seabass, Stickleback, Pufferfish, Zebrafish (92%).
Specificity:	Human CUL2 / Cullin 2.
Epitope:	C-Terminus
Reactivity:	Human, Gorilla, Orangutan, Monkey, Mouse, Rat, Bovine, Dog, Horse, Pig, Rabbit, Chicken, Xenopus
Predicted Reactivity:	Hamster, Zebrafish
Purification:	Immunoaffinity purified
Presentation:	Tris-buffered saline, pH 7.3, 0.5% BSA, 0.02% sodium azide
Recommended Storage:	Store at -20°C. Minimize freezing and thawing.
Usage Summary:	Peptide ELISA: antibody detection limit dilution 1:8000. Western blot: Approx 100kDa band observed in lysates of cell line NIH3T3 (calculated MW of 87.0kDa according to Human NP_003582.2 and of 86.9kDa according to Mouse NP_083678.2). Recommended concentration: 1-3 ug/ml.
Uses:	IHC - Paraffin (3.75 µg/ml), Western blot (1 - 3 µg/ml), ELISA (1:8000) (Optimal dilution to be determined by the researcher)
Size:	50 µg
Concentration:	0.5 mg/ml

Immunohistochemistry Image:



Anti-Cullin 2 / CUL2 antibody IHC of human breast. Immunohistochemistry of formalin-fixed, paraffin-embedded tissue after heat-induced antigen retrieval. Antibody LS-B8334 dilution 3.75 ug/ml.

Western Blot Image:



CUL2 antibody (1 ug/ml) staining of NIH3T3 lysate (35 ug protein/ml in RIPA buffer). Primary incubation was 1 hour. Detected by chemiluminescence.

Requested From:

Japan

Laboratory Reagent For In Vitro Research Use Only

Not for resale without prior written consent from LifeSpan BioSciences, Inc.

Created on 9/24/2014

© 2014 LifeSpan BioSciences