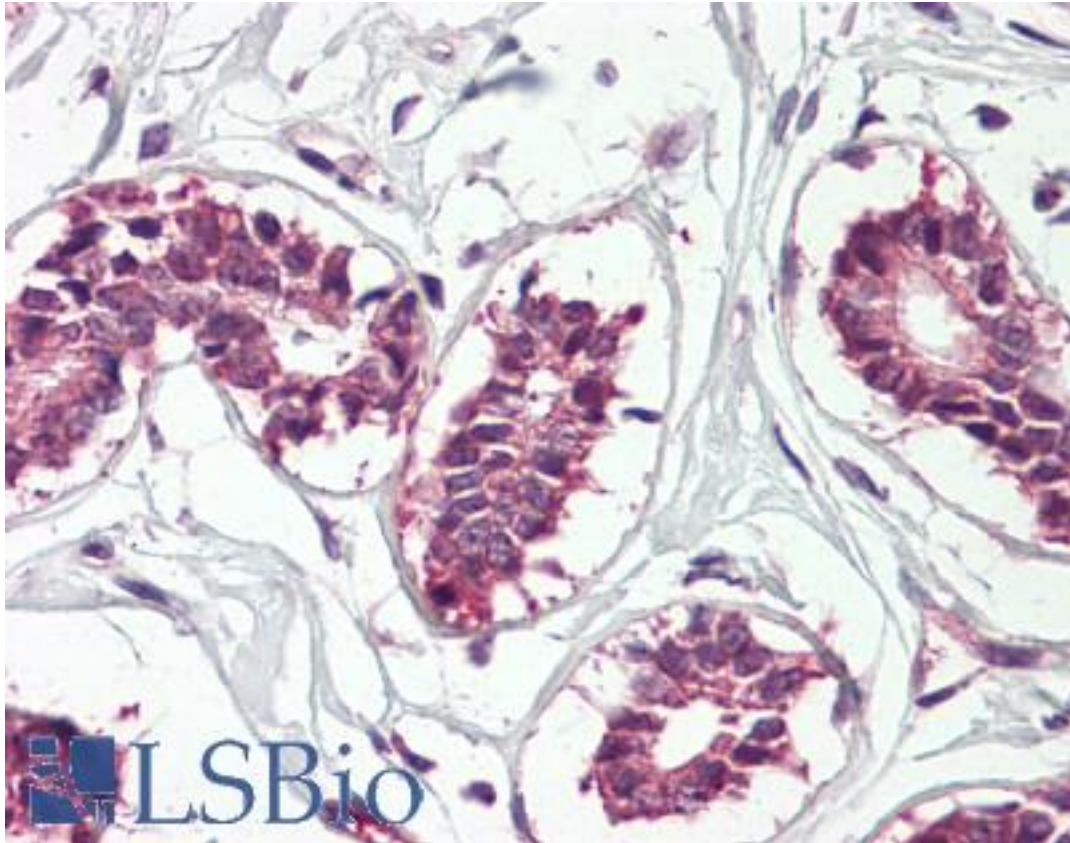


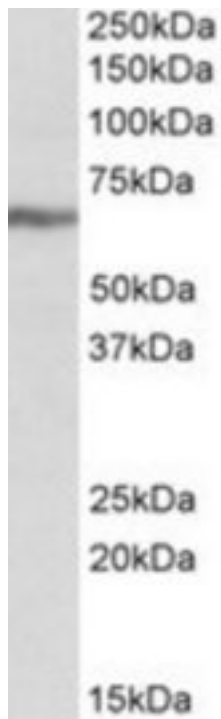
CRD-BP / ZBP1 / IGF2BP1 Goat anti-Human Polyclonal (Internal) Antibody - LS-B8333 - LSBio	
<b>CatalogID:</b>	LS-B8333
<b>Validation:</b>	This antibody replaces catalog number LS-C112987. It has been validated for use in the following assays: IHC-P.
<b>Target:</b>	Insulin-like growth factor 2 mRNA binding protein 1 (IGF2BP1)
<b>Synonyms:</b>	IGF2BP1 Antibody, CRD-BP Antibody, CRDBP Antibody, IMP1 Antibody, IGF2 mRNA-binding protein 1 Antibody, IMP-1 Antibody, ZBP-1 Antibody, Zip code-binding protein 1 Antibody, Zipcode-binding protein 1 Antibody, VICKZ family member 1 Antibody, IGF-II mRNA-binding protein 1 Antibody, VICKZ1 Antibody
<b>Host</b>	IGF2BP1 antibody was produced in Goat
<b>Clonality:</b>	Polyclonal
<b>Immunogen Species:</b>	CRD-BP / ZBP1 / IGF2BP1 antibody was raised against Human
<b>Antigen Type:</b>	Synthetic peptide
<b>Immunogen:</b>	CRD-BP / ZBP1 / IGF2BP1 antibody was raised against synthetic peptide C-EKVFAEHKISYSGQ from an internal region of human IGF2BP1 (NP_006537.3; NP_001153895.1). Percent identity by BLAST analysis: Human, Gorilla, Gibbon, Monkey, Marmoset, Mouse, Rat, Hamster, Elephant, Panda, Bovine, Dog, Horse, Rabbit, Opossum (100%); Pig (86%).
<b>Specificity:</b>	Human IGF2BP1. This antibody is expected to recognize both reported isoforms (NP_006537.3; NP_001153895.1).
<b>Epitope:</b>	Internal
<b>Reactivity:</b>	Human, Gorilla, Gibbon, Monkey, Mouse, Rat, Bovine, Dog, Hamster, Horse, Rabbit
<b>Purification:</b>	Immunoaffinity purified
<b>Presentation:</b>	Tris-buffered saline, pH 7.3, 0.5% BSA, 0.02% sodium azide
<b>Recommended Storage:</b>	Store at -20°C. Minimize freezing and thawing.
<b>Usage Summary:</b>	Peptide ELISA: antibody detection limit dilution 1:16000. Western blot: Approx 65kDa band observed in lysates of cell line K562 (calculated MW of 63.5kDa according to NP_006537.3;). Recommended concentration: 0.3-1 ug/ml.
<b>Uses:</b>	IHC - Paraffin (3.75 µg/ml), Western blot (0.3 - 1 µg/ml), ELISA (1:16000) (Optimal dilution to be determined by the researcher)
<b>Size:</b>	50 µg
<b>Concentration:</b>	0.5 mg/ml

**Immunohistochemistry Image:**



Anti-CRD-BP / IGF2BP1 antibody IHC of human breast. Immunohistochemistry of formalin-fixed, paraffin-embedded tissue after heat-induced antigen retrieval. Antibody LS-B8333 dilution 3.75 ug/ml.

**Western Blot Image:**



IGF2BP1 antibody (0.3 ug/ml) staining of K562 lysate (35 ug protein/ml in RIPA buffer).  
Primary incubation was 1 hour. Detected by chemiluminescence.

**Requested From:**

Japan

Laboratory Reagent For In Vitro Research Use Only

Not for resale without prior written consent from LifeSpan BioSciences, Inc.

Created on 9/24/2014

© 2014 LifeSpan BioSciences