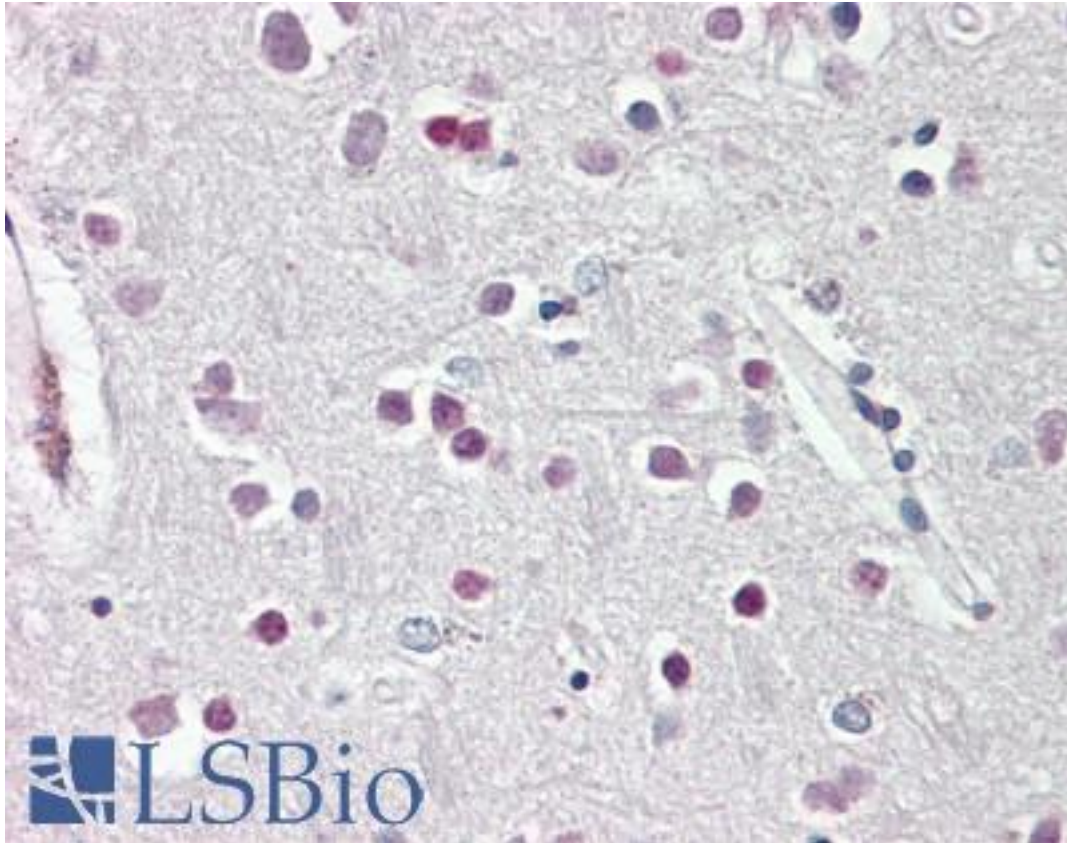


SOX3 Goat anti-Human Polyclonal (C-Terminus) Antibody - LS-B8332 - LSBio

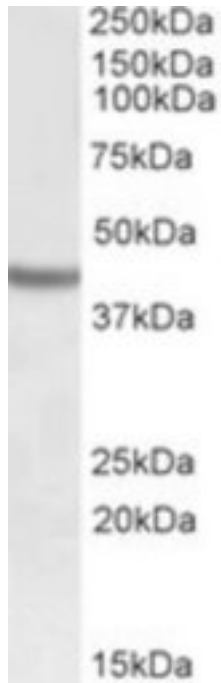
CatalogID:	LS-B8332
Validation:	This antibody replaces catalog number LS-C113021. It has been validated for use in the following assays: IHC-P.
Target:	SRY (sex determining region Y)-box 3 (SOX3)
Synonyms:	SOX3 Antibody, GHDX Antibody, MRGH Antibody, SOXB Antibody, Panhypopituitarism Antibody, PHPX Antibody, Sry-box3 Antibody, PHP Antibody, Transcription factor SOX-3 Antibody
Family / Subfamily:	Transcription factor
Host	SOX3 antibody was produced in Goat
Clonality:	Polyclonal
Immunogen Species:	SOX3 antibody was raised against Human
Antigen Type:	Synthetic peptide
Immunogen:	SOX3 antibody was raised against synthetic peptide C-DAASPLPGGRLHGVH from the C-terminus of human SOX3 (NP_005625.2). Percent identity by BLAST analysis: Human, Gorilla, Gibbon, Monkey, Mouse, Rabbit (100%); Bat, Dog (93%); Elephant (80%).
Specificity:	Human SOX3.
Epitope:	C-Terminus
Reactivity:	Human, Gorilla, Gibbon, Monkey, Mouse, Rabbit
Predicted Reactivity:	Bat, Dog
Purification:	Immunoaffinity purified
Presentation:	Tris-buffered saline, pH 7.3, 0.5% BSA, 0.02% sodium azide
Recommended Storage:	Store at -20°C. Minimize freezing and thawing.
Usage Summary:	Peptide ELISA: antibody detection limit dilution 1:8000. Western blot: Approx 42kDa band observed in Human Brain (Cerebellum, Cerebral Cortex and Frontal Cortex) lysates (calculated MW of 45.2kDa according to NP_005625.2). Recommended concentration: 0.5-1.5 ug/ml.
Uses:	IHC - Paraffin (3.75 µg/ml), Western blot (0.5 - 1.5 µg/ml), ELISA (1:8000) (Optimal dilution to be determined by the researcher)
Size:	50 µg
Concentration:	0.5 mg/ml

Immunohistochemistry Image:



Anti-SOX3 antibody IHC of human brain, cortex. Immunohistochemistry of formalin-fixed, paraffin-embedded tissue after heat-induced antigen retrieval. Antibody LS-B8332 dilution 3.75 ug/ml.

Western Blot Image:



SOX3 antibody (0.5 ug/ml) staining of Human Cerebral Cortex lysate (35 ug protein/ml in RIPA buffer). Primary incubation was 1 hour. Detected by chemiluminescence.

Requested From:

Japan

Laboratory Reagent For In Vitro Research Use Only

Not for resale without prior written consent from LifeSpan BioSciences, Inc.

Created on 9/24/2014

© 2014 LifeSpan BioSciences