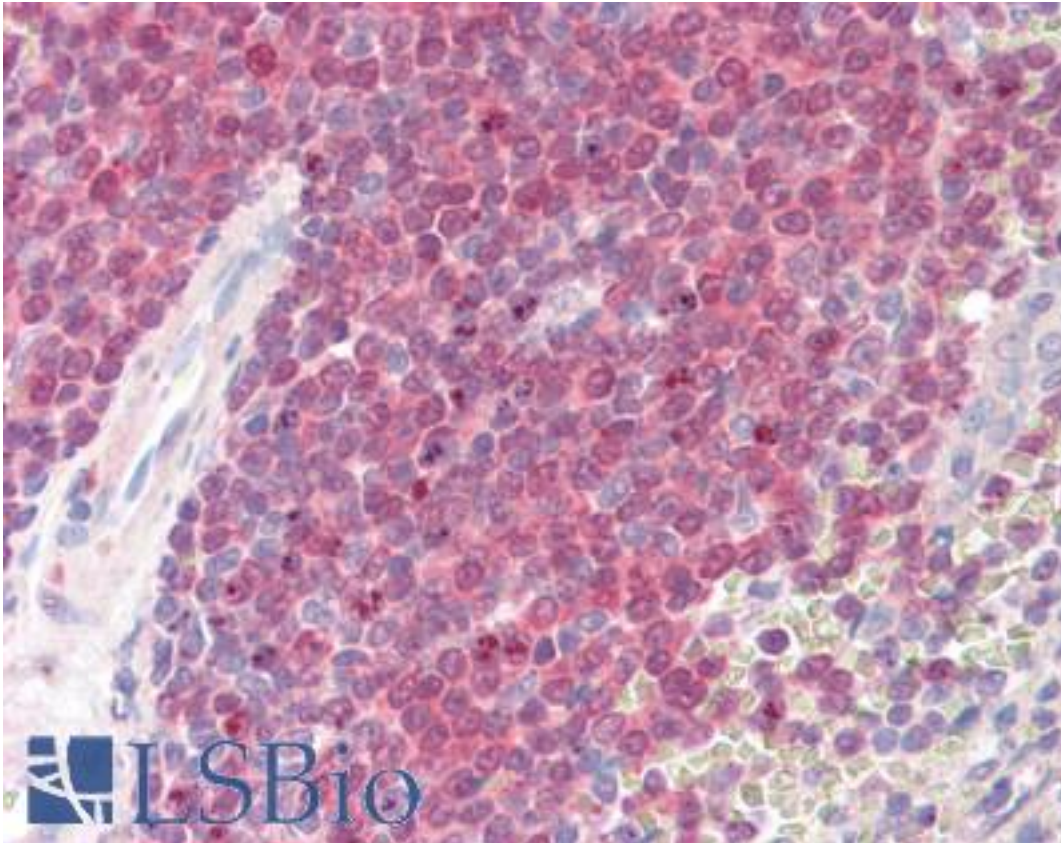


POU2AF1 / BOB1 Goat anti-Human Polyclonal (C-Terminus) Antibody - LS-B8331 - LSBio	
<b>CatalogID:</b>	LS-B8331
<b>Validation:</b>	This antibody replaces catalog number LS-C139798. It has been validated for use in the following assays: IHC-P.
<b>Target:</b>	POU class 2 associating factor 1 (POU2AF1)
<b>Synonyms:</b>	POU2AF1 Antibody, BOB-1 Antibody, OBF-1 Antibody, OCT-binding factor 1 Antibody, BOB1 Antibody, OBF1 Antibody, OCA-B Antibody, OCAB Antibody
<b>Host</b>	POU2AF1 antibody was produced in Goat
<b>Clonality:</b>	Polyclonal
<b>Immunogen Species:</b>	POU2AF1 / BOB1 antibody was raised against Human
<b>Antigen Type:</b>	Synthetic peptide
<b>Immunogen:</b>	POU2AF1 / BOB1 antibody was raised against synthetic peptide C-DSDAYALNHTLSVE from the C-terminus of human POU2AF1 / BOB1 (NP_006226.2). Percent identity by BLAST analysis: Human, Chimpanzee, Gorilla, Orangutan, Monkey, Marmoset, Tamarin, Bat, Horse (100%); Gibbon, Panda, Dog, Bovine (93%); Elephant, Rabbit (86%).
<b>Specificity:</b>	Human POU2AF1 / BOB1.
<b>Epitope:</b>	C-Terminus
<b>Reactivity:</b>	Human, Chimpanzee, Gorilla, Orangutan, Monkey, Bat, Horse
<b>Predicted Reactivity:</b>	Gibbon, Bovine, Dog
<b>Purification:</b>	Immunoaffinity purified
<b>Presentation:</b>	Tris-buffered saline, pH 7.3, 0.5% BSA, 0.02% sodium azide
<b>Recommended Storage:</b>	Store at -20°C. Minimize freezing and thawing.
<b>Usage Summary:</b>	Peptide ELISA: antibody detection limit dilution 1:8000. Western blot: In transfected HEK293 transiently expressing full-length Human POU2AF1 (myc and DYKDDDDK tagged), a band of approx. 38kD was observed. No bands were observed in mock-transfected HEK293 and the same band was observed using anti-DYKDDDDK tag antibody. Recommended concentration, 1-2 ug/ml.
<b>Uses:</b>	IHC - Paraffin (3.75 µg/ml), Western blot (1 - 2 µg/ml), ELISA (1:8000) (Optimal dilution to be determined by the researcher)
<b>Size:</b>	50 µg
<b>Concentration:</b>	0.5 mg/ml

**Immunohistochemistry Image:**



Anti-POU2AF1 / BOB1 antibody IHC of human spleen. Immunohistochemistry of formalin-fixed, paraffin-embedded tissue after heat-induced antigen retrieval. Antibody LS-B8331 dilution 3.75 ug/ml.

**Requested From:**

Japan

Laboratory Reagent For In Vitro Research Use Only

Not for resale without prior written consent from LifeSpan BioSciences, Inc.

Created on 9/24/2014

© 2014 LifeSpan BioSciences