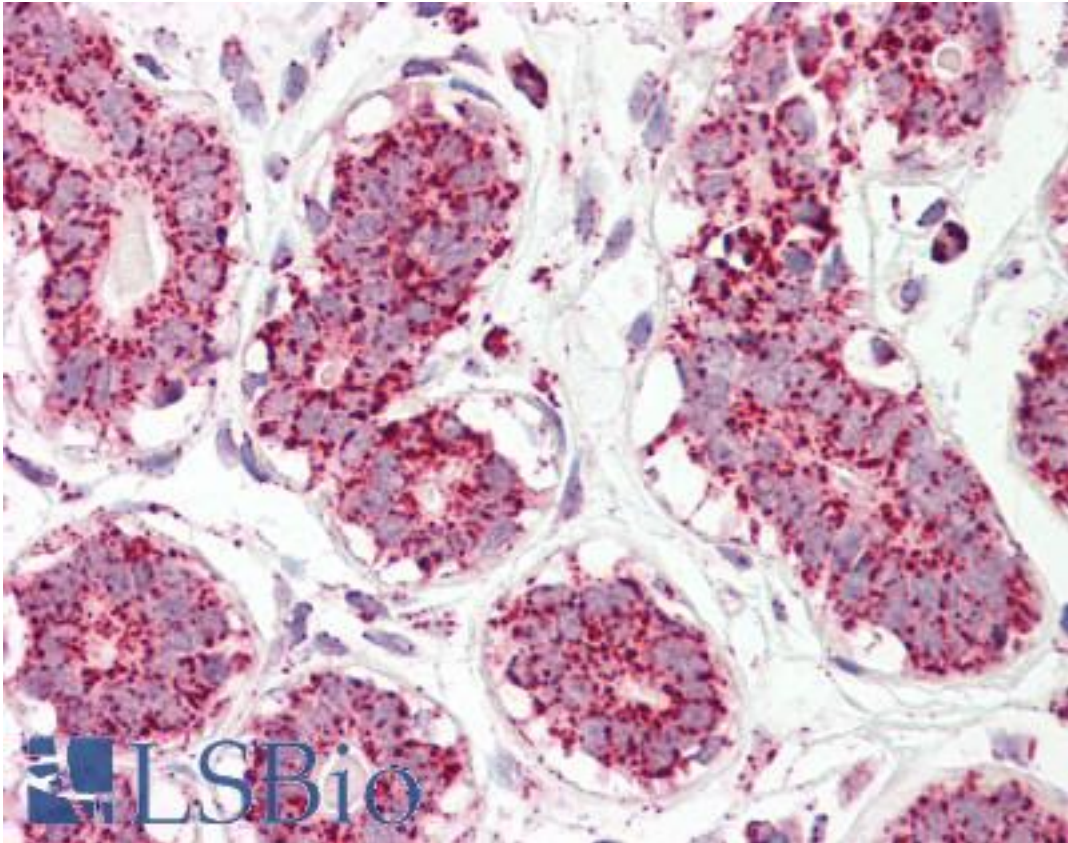


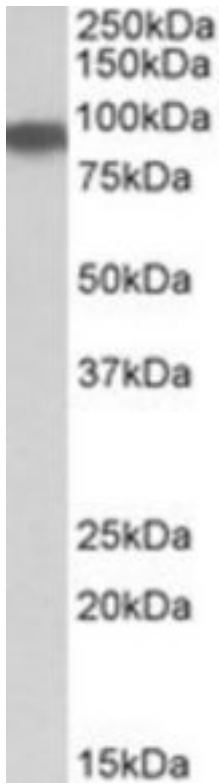
ACO2 / Aconitase 2 Goat anti-Human Polyclonal (Internal) Antibody - LS-B8319 - LSBio	
CatalogID:	LS-B8319
Validation:	This antibody replaces catalog number LS-C112935. It has been validated for use in the following assays: IHC-P.
Target:	aconitase 2, mitochondrial (ACO2)
Synonyms:	ACO2 Antibody, ACONM Antibody, Aconitase 2 Antibody, Aconitase 2, mitochondrial Antibody, Citrate hydro-lyase Antibody, ICRD Antibody
Host	ACO2 antibody was produced in Goat
Clonality:	Polyclonal
Immunogen Species:	ACO2 / Aconitase 2 antibody was raised against Human
Antigen Type:	Synthetic peptide
Immunogen:	ACO2 / Aconitase 2 antibody was raised against synthetic peptide C-QHVDVSPSTSQLQ from an internal region of human ACO2 (NP_001089.1). Percent identity by BLAST analysis: Human, Gorilla, Gibbon, Monkey, Marmoset, Turkey, Chicken (100%); Mouse, Rat, Hamster, Panda, Dog, Bat, Bovine, Horse, Rabbit, Pig, Platypus (92%); Elephant, Xenopus, Beetle (85%).
Specificity:	Human ACO2.
Epitope:	Internal
Reactivity:	Human, Gorilla, Gibbon, Monkey, Chicken
Predicted Reactivity:	Mouse, Rat, Bat, Bovine, Dog, Hamster, Horse, Pig, Rabbit
Purification:	Immunoaffinity purified
Presentation:	Tris-buffered saline, pH 7.3, 0.5% BSA, 0.02% sodium azide
Recommended Storage:	Store at -20°C. Minimize freezing and thawing.
Usage Summary:	Peptide ELISA: antibody detection limit dilution 1:32000. Western blot: Approx 90kDa band observed in Human Heart lysates (calculated MW of 85.4kDa according to NP_001089.1). Recommended concentration: 0.01-0.03 ug/ml.
Uses:	IHC - Paraffin (3.75 µg/ml), Western blot (0.01 - 0.03 µg/ml), ELISA (1:32000) (Optimal dilution to be determined by the researcher)
Size:	50 µg
Concentration:	0.5 mg/ml

Immunohistochemistry Image:



Anti-ACO2 / Aconitase 2 antibody IHC of human breast. Immunohistochemistry of formalin-fixed, paraffin-embedded tissue after heat-induced antigen retrieval. Antibody LS-B8319 dilution 3.75 ug/ml.

Western Blot Image:



ACO2 antibody (0.01 ug/ml) staining of Heart lysate (35 ug protein/ml in RIPA buffer). Primary incubation was 1 hour. Detected by chemiluminescence.

Requested From:

Japan

Laboratory Reagent For In Vitro Research Use Only

Not for resale without prior written consent from LifeSpan BioSciences, Inc.

Created on 9/24/2014

© 2014 LifeSpan BioSciences