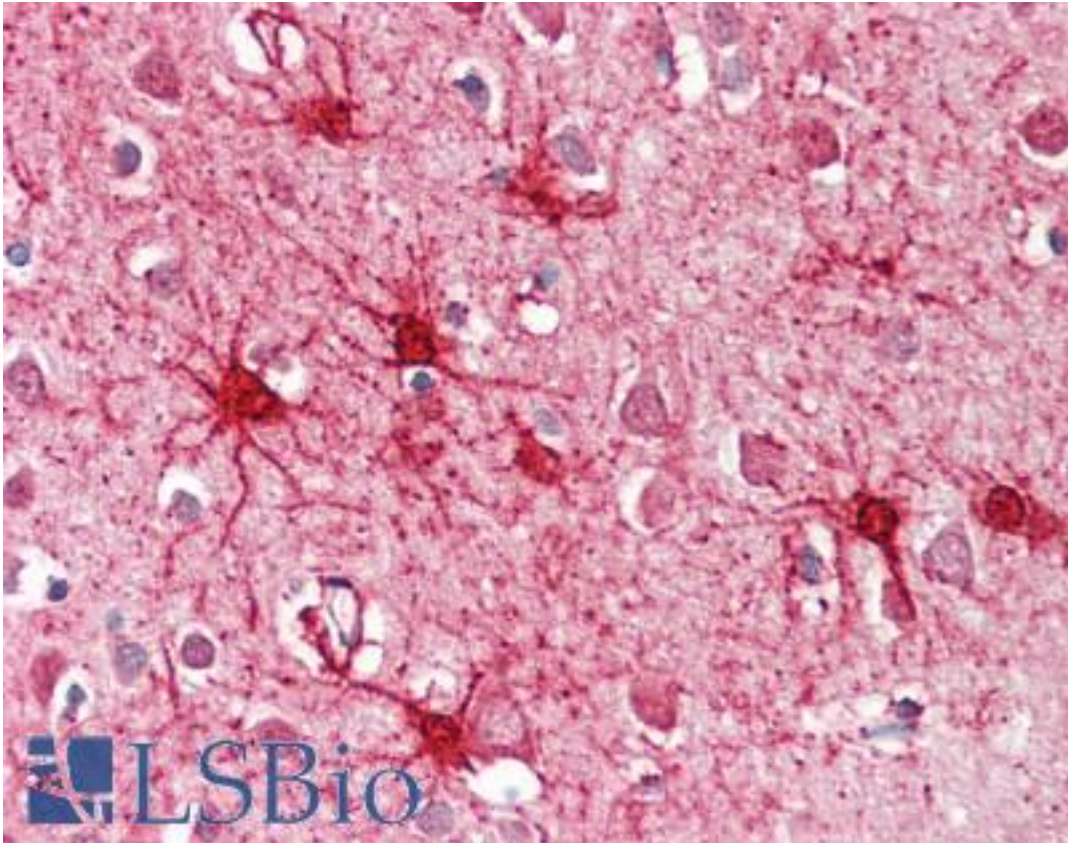


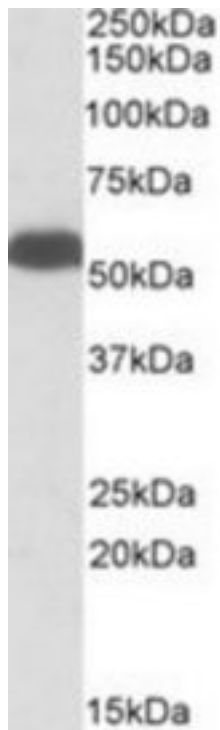
GLUD1/Glutamate Dehydrogenase Goat anti-Human Polyclonal (Internal) Antibody - LS-B8318 - LSBio	
CatalogID:	LS-B8318
Validation:	This antibody replaces catalog number LS-C112934. It has been validated for use in the following assays: IHC-P.
Target:	glutamate dehydrogenase 1 (GLUD1)
Synonyms:	GLUD1 Antibody, GDH1 Antibody, GDH 1 Antibody, Glutamate dehydrogenase 1 Antibody, Glutamate dehydrogenase 2 Antibody, GDH Antibody, GLUD Antibody
Host	GLUD1 antibody was produced in Goat
Clonality:	Polyclonal
Immunogen Species:	GLUD1/Glutamate Dehydrogenase antibody was raised against Human
Antigen Type:	Synthetic peptide
Immunogen:	GLUD1/Glutamate Dehydrogenase antibody was raised against synthetic peptide C-ESEEQKRNRVIRGILR from an internal region of human GLUD1 (NP_005262.1; NP_036216.2). Percent identity by BLAST analysis: Human, Chimpanzee, Gorilla, Orangutan, Gibbon, Monkey, Marmoset, Mouse, Panda, Horse, Pig (100%); Rat, Opossum, Pufferfish (93%); Bovine, Xenopus, Stickleback (87%).
Specificity:	Human GLUD1. This antibody is expected to recognize both reported isoforms (NP_005262.1; NP_036216.2).
Epitope:	Internal
Reactivity:	Human, Chimpanzee, Gorilla, Orangutan, Gibbon, Monkey, Mouse, Horse, Pig
Predicted Reactivity:	Rat
Purification:	Immunoaffinity purified
Presentation:	Tris-buffered saline, pH 7.3, 0.5% BSA, 0.02% sodium azide
Recommended Storage:	Store at -20°C. Minimize freezing and thawing.
Usage Summary:	Peptide ELISA: antibody detection limit dilution 1:32000. Western blot: Approx 55kDa band observed in Human Liver and in Mouse Liver lysates (calculated MW of 61.4kDa according to Human NP_005262.1 and NP_036216.2 and of 61.3 according to Mouse NP_032159.1. Recommended concentration: 0.3-1 ug/ml.
Uses:	IHC - Paraffin (3.75 µg/ml), Western blot (0.3 - 1 µg/ml), ELISA (1:32000) (Optimal dilution to be determined by the researcher)
Size:	50 µg
Concentration:	0.5 mg/ml

Immunohistochemistry Image:



Anti-GLUD1 antibody IHC of human brain, cortex. Immunohistochemistry of formalin-fixed, paraffin-embedded tissue after heat-induced antigen retrieval. Antibody LS-B8318 dilution 3.75 ug/ml.

Western Blot Image:



GLUD1 antibody (0.3 ug/ml) staining of Mouse Liver lysate (35 ug protein/ml in RIPA buffer). Primary incubation was 1 hour. Detected by chemiluminescence.

Requested From:

Japan

Laboratory Reagent For In Vitro Research Use Only

Not for resale without prior written consent from LifeSpan BioSciences, Inc.

Created on 9/24/2014

© 2014 LifeSpan BioSciences