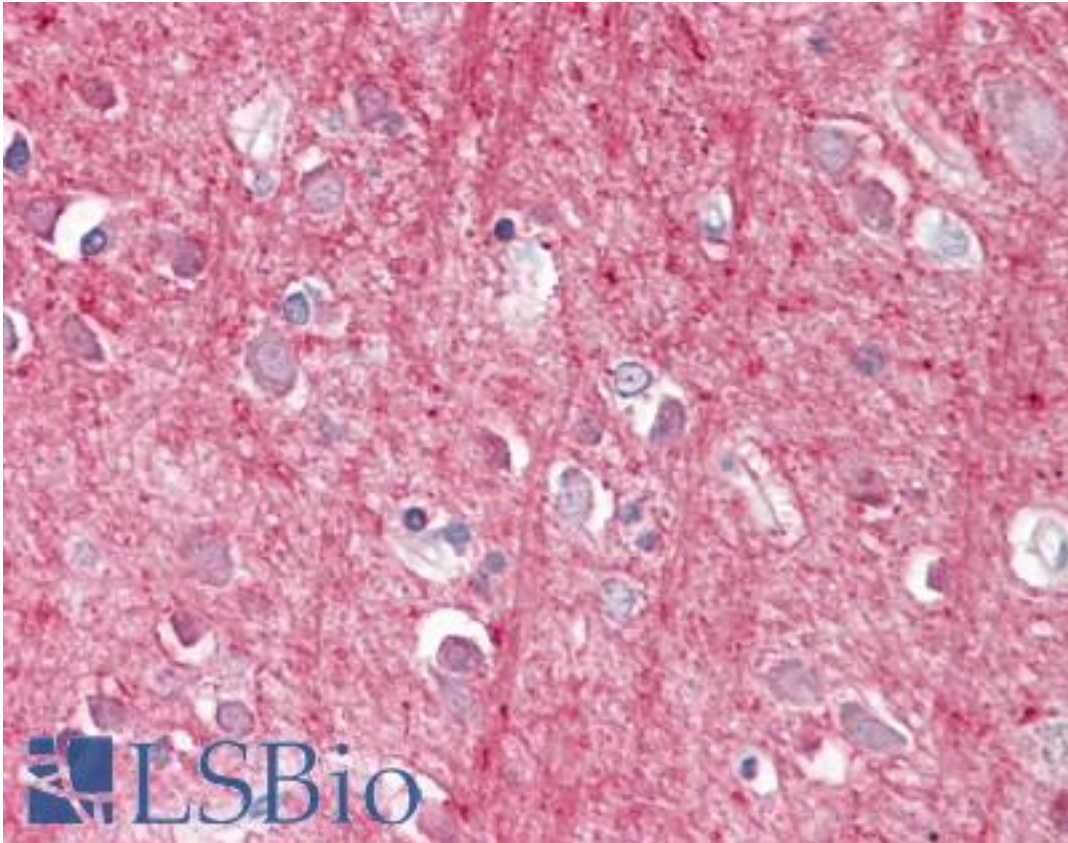


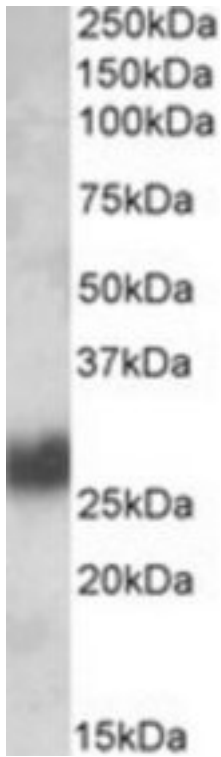
THY1 / CD90 Goat anti-Human Polyclonal (Internal) Antibody - LS-B8313 - LSBio	
<b>CatalogID:</b>	LS-B8313
<b>Validation:</b>	This antibody replaces catalog number LS-C112851. It has been validated for use in the following assays: IHC-P.
<b>Target:</b>	Thy-1 cell surface antigen (THY1)
<b>Synonyms:</b>	THY1 Antibody, CD90 antigen Antibody, CD90 Antibody, CDw90 Antibody, Thy-1 antigen Antibody, Thy-1 T-cell antigen Antibody, Thy-1 Antibody, Thy-1 cell surface antigen Antibody, Thy-1 membrane glycoprotein Antibody
<b>Host</b>	THY1 antibody was produced in Goat
<b>Clonality:</b>	Polyclonal
<b>Immunogen Species:</b>	THY1 / CD90 antibody was raised against Human
<b>Antigen Type:</b>	Synthetic peptide
<b>Immunogen:</b>	THY1 / CD90 antibody was raised against synthetic peptide C-PEHTYRSRTNFTSKY from an internal region of human THY1 (NP_006279.2). Percent identity by BLAST analysis: Human, Gorilla, Orangutan, Gibbon, Monkey, Marmoset (100%); Panda, Dog, Horse (93%); Pig (87%); Elephant, Rabbit, Guinea pig (80%).
<b>Specificity:</b>	Human THY1.
<b>Epitope:</b>	Internal
<b>Reactivity:</b>	Human, Gorilla, Orangutan, Gibbon, Monkey
<b>Predicted Reactivity:</b>	Dog, Horse
<b>Purification:</b>	Immunoaffinity purified
<b>Presentation:</b>	Tris-buffered saline, pH 7.3, 0.5% BSA, 0.02% sodium azide
<b>Recommended Storage:</b>	Store at -20°C. Minimize freezing and thawing.
<b>Usage Summary:</b>	Peptide ELISA: antibody detection limit dilution 1:64000. Western blot: Approx 26kDa band observed in Human Brain (Cerebellum) and Human Tonsil lysates (calculated MW of 17.9kDa according to NP_006279.2). The observed molecular weight corresponds to earlier findings with different antibodies from other commercial sources. Recommended concentration: 0.1-0.3 ug/ml.
<b>Uses:</b>	IHC - Paraffin (3.75 µg/ml), Western blot (0.1 - 0.3 µg/ml), ELISA (1:64000) (Optimal dilution to be determined by the researcher)
<b>Size:</b>	50 µg
<b>Concentration:</b>	0.5 mg/ml

**Immunohistochemistry Image:**



Anti-Thy-1 / CD90 antibody IHC of human brain, cortex. Immunohistochemistry of formalin-fixed, paraffin-embedded tissue after heat-induced antigen retrieval. Antibody LS-B8313 dilution 3.75 ug/ml.

**Western Blot Image:**



THY1 antibody (0.1 ug/ml) staining of Human Tonsil lysate (35 ug protein/ml in RIPA buffer). Primary incubation was 1 hour. Detected by chemiluminescence.

**Requested From:**

Japan

Laboratory Reagent For In Vitro Research Use Only

Not for resale without prior written consent from LifeSpan BioSciences, Inc.

Created on 9/24/2014

© 2014 LifeSpan BioSciences