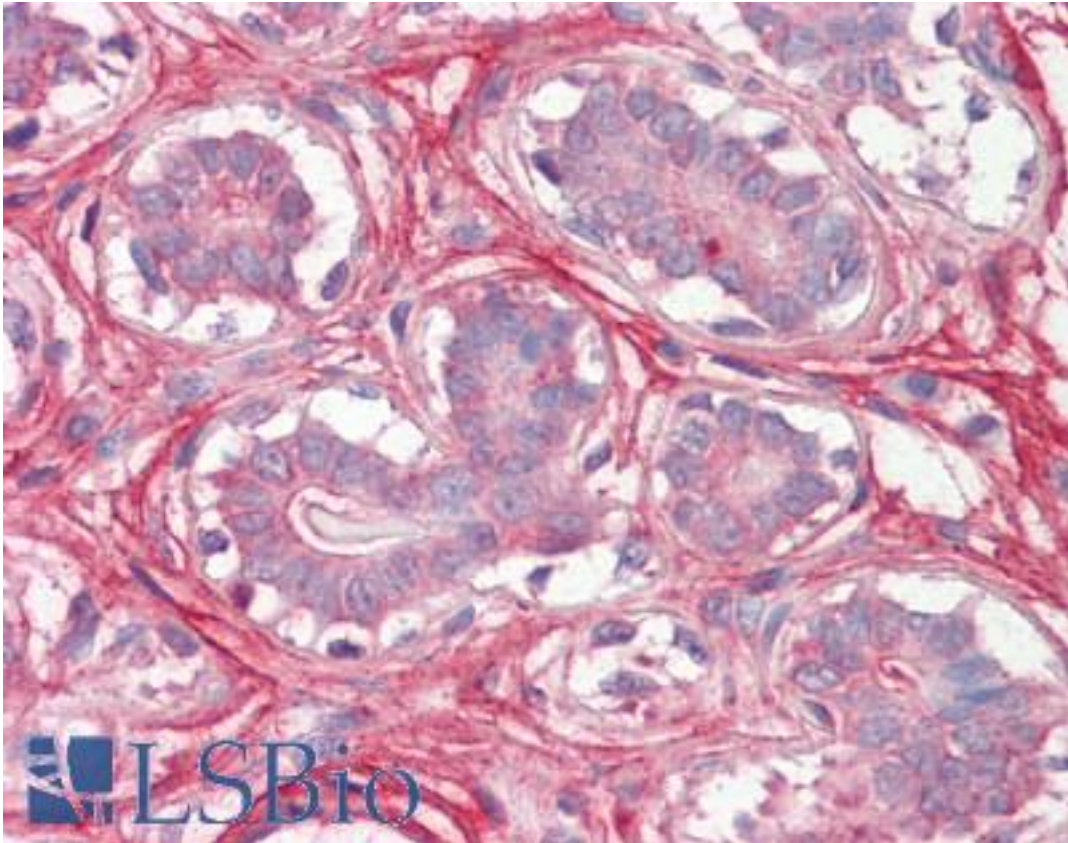


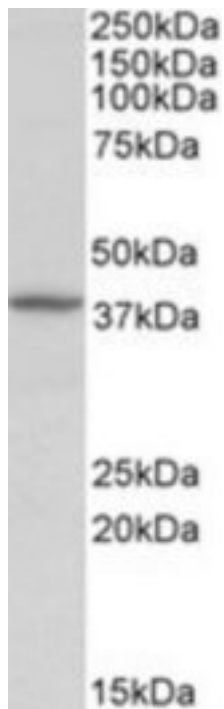
DCN / Decorin Goat anti-Human Polyclonal (Internal) Antibody - LS-B8312 - LSBio	
<b>CatalogID:</b>	LS-B8312
<b>Validation:</b>	This antibody replaces catalog number LS-C112845. It has been validated for use in the following assays: IHC-P.
<b>Target:</b>	decorin (DCN)
<b>Synonyms:</b>	DCN Antibody, CSCD Antibody, Decorin proteoglycan Antibody, PG-S2 Antibody, PG40 Antibody, Proteoglycan core protein Antibody, SLRR1B Antibody, Small leucine-rich protein 1B Antibody, PGII Antibody, PGS2 Antibody, Bone proteoglycan II Antibody, Decorin Antibody, DSPG2 Antibody
<b>Host</b>	DCN antibody was produced in Goat
<b>Clonality:</b>	Polyclonal
<b>Immunogen Species:</b>	DCN / Decorin antibody was raised against Human
<b>Antigen Type:</b>	Synthetic peptide
<b>Immunogen:</b>	DCN / Decorin antibody was raised against synthetic peptide C-KISRVAASLKGLNN from an internal region of human DCN / Decorin (NP_001911.1; NP_598011.1; NP_598012.1;). Percent identity by BLAST analysis: Human, Chimpanzee, Gorilla, Gibbon, Monkey (100%); Pig (93%); Marmoset, Sheep, Goat, Bat, Bovine, Guinea pig (87%); Elephant, Dog, Horse (80%).
<b>Specificity:</b>	Human DCN / Decorin. This antibody is expected to recognize the three reported isoforms a, b and c (NP_001911.1; NP_598011.1; NP_598012.1 resp.). Reported variants NP_598010.1 and NP_001911.1 represent identical protein.
<b>Epitope:</b>	Internal
<b>Reactivity:</b>	Human, Chimpanzee, Gorilla, Gibbon, Monkey
<b>Predicted Reactivity:</b>	Pig
<b>Purification:</b>	Immunoaffinity purified
<b>Presentation:</b>	Tris-buffered saline, pH 7.3, 0.5% BSA, 0.02% sodium azide
<b>Recommended Storage:</b>	Store at -20°C. Minimize freezing and thawing.
<b>Usage Summary:</b>	Peptide ELISA: antibody detection limit dilution 1:8000. Western blot: Approx 38kDa band observed in Human Kidney lysates (calculated MW of 39.7kDa according to NP_001911.1). Recommended concentration: 0.5-2 ug/ml.
<b>Uses:</b>	IHC - Paraffin (3.75 µg/ml), Western blot (0.5 - 2 µg/ml), ELISA (1:8000) (Optimal dilution to be determined by the researcher)
<b>Size:</b>	50 µg
<b>Concentration:</b>	0.5 mg/ml

**Immunohistochemistry Image:**



Anti-Decorin antibody IHC of human breast. Immunohistochemistry of formalin-fixed, paraffin-embedded tissue after heat-induced antigen retrieval. Antibody LS-B8312 dilution 3.75 ug/ml.

**Western Blot Image:**



DCN antibody (0.5 ug/ml) staining of Human Kidney lysate (35 ug protein/ml in RIPA buffer). Primary incubation was 1 hour. Detected by chemiluminescence.

**Requested From:**

Japan

Laboratory Reagent For In Vitro Research Use Only

Not for resale without prior written consent from LifeSpan BioSciences, Inc.

Created on 9/24/2014

© 2014 LifeSpan BioSciences