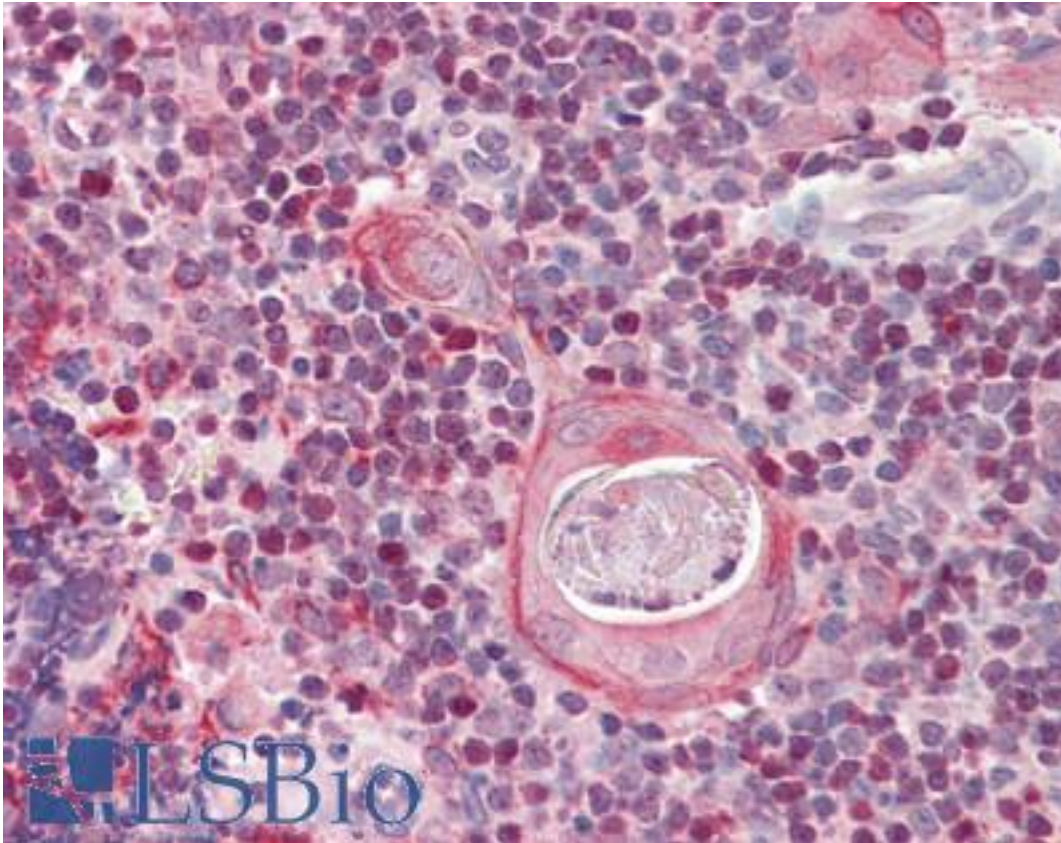


SATB1 Goat anti-Human Polyclonal (Internal) Antibody - LS-B8311 - LSBio	
CatalogID:	LS-B8311
Validation:	This antibody replaces catalog number LS-C112663. It has been validated for use in the following assays: IHC-P.
Target:	SATB homeobox 1 (SATB1)
Synonyms:	SATB1 Antibody, DNA-binding protein SATB1 Antibody, SATB homeobox 1 Antibody
Host	SATB1 antibody was produced in Goat
Clonality:	Polyclonal
Immunogen Species:	SATB1 antibody was raised against Human
Antigen Type:	Synthetic peptide
Immunogen:	SATB1 antibody was raised against synthetic peptide C-ESDEENRQKTRPRT from an internal region of human SATB1 (NP_002962.1). Percent identity by BLAST analysis: Human, Gorilla, Gibbon, Monkey, Marmoset, Mouse, Rat, Hamster, Rabbit (100%); Elephant, Opossum, Lizard (86%).
Specificity:	Human SATB1. Reported variants NP_001124482.1 and NP_002962.1 represent identical protein.
Epitope:	Internal
Reactivity:	Human, Gorilla, Gibbon, Monkey, Mouse, Rat, Hamster, Rabbit
Purification:	Immunoaffinity purified
Presentation:	Tris-buffered saline, pH 7.3, 0.5% BSA, 0.02% sodium azide
Recommended Storage:	Store at -20°C. Minimize freezing and thawing.
Usage Summary:	Peptide ELISA: antibody detection limit dilution 1:32000. Western blot: Experiments gave bands at approx. 110 kDa and 85 kDa in lysates of cell line MOLT4 after 0.3 ug/ml antibody staining. The observed 110 kDa band corresponds to earlier findings in literature with different antibodies (De Belle et al, J Cell Biol. 1998 Apr 20;141(2):335-48.; PMID: 9548713). This protein has a calculated MW of 86.0 kDa according to NP_002962.1. Recommended concentration: 0.3-1 ug/ml.
Uses:	IHC - Paraffin (3.75 µg/ml), Western blot (0.3 - 1 µg/ml), ELISA (1:32000) (Optimal dilution to be determined by the researcher)
Size:	50 µg
Concentration:	0.5 mg/ml

Immunohistochemistry Image:



Anti-SATB1 antibody IHC of human thymus. Immunohistochemistry of formalin-fixed, paraffin-embedded tissue after heat-induced antigen retrieval. Antibody LS-B8311 dilution 3.75 ug/ml.

Western Blot Image:



SATB1 antibody (0.3 ug/ml) staining of MOLT4 lysate (35 ug protein/ml in RIPA buffer). Primary incubation was 1 hour. Detected by chemiluminescence.

Requested From:

Japan

Laboratory Reagent For In Vitro Research Use Only

Not for resale without prior written consent from LifeSpan BioSciences, Inc.

Created on 9/24/2014

© 2014 LifeSpan BioSciences