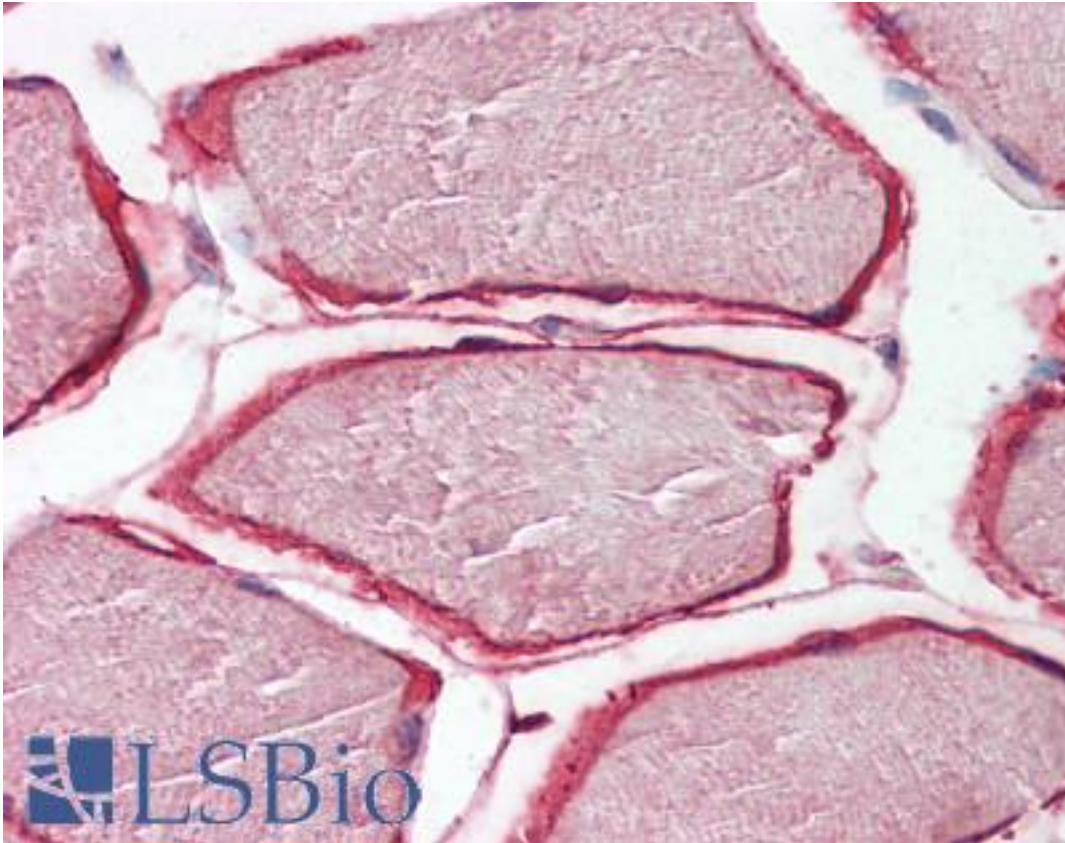


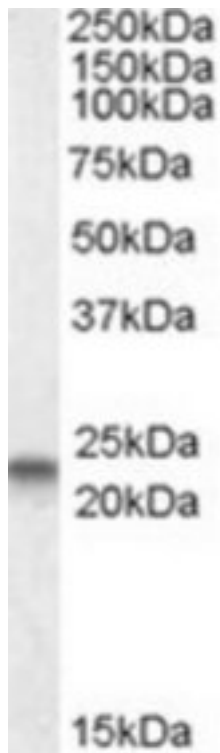
CAV3 / Caveolin 3 Goat anti-Human Polyclonal (N-Terminus) Antibody - LS-B8308 - LSBio	
CatalogID:	LS-B8308
Validation:	This antibody replaces catalog number LS-C112836. It has been validated for use in the following assays: IHC-P.
Target:	caveolin 3 (CAV3)
Synonyms:	CAV3 Antibody, Caveolin-3 Antibody, Caveolin3 Antibody, Caveolin 3 Antibody, LGMD1C Antibody, VIP-21 Antibody, VIP21 Antibody, LQT9 Antibody, M-caveolin Antibody
Host	CAV3 antibody was produced in Goat
Clonality:	Polyclonal
Immunogen Species:	CAV3 / Caveolin 3 antibody was raised against Human
Antigen Type:	Synthetic peptide
Immunogen:	CAV3 / Caveolin 3 antibody was raised against synthetic peptide EHTDLEAQIVKDIH-C from the N-terminus of human CAV3 / Caveolin 3 (NP_203123.1). Percent identity by BLAST analysis: Human, Gorilla, Gibbon, Monkey, Panda, Dog, Bovine, Horse (100%); Bat, Rabbit, Pig (93%); Mouse, Rat (86%).
Specificity:	Human CAV3 / Caveolin 3. Reported variants represent identical protein (NP_001225.1; NP_203123.1).
Epitope:	N-Terminus
Reactivity:	Human, Gorilla, Gibbon, Monkey, Bovine, Dog, Horse
Predicted Reactivity:	Bat, Pig, Rabbit
Purification:	Immunoaffinity purified
Presentation:	Tris-buffered saline, pH 7.3, 0.5% BSA, 0.02% sodium azide
Recommended Storage:	Store at -20°C. Minimize freezing and thawing.
Usage Summary:	Peptide ELISA: antibody detection limit dilution 1:4000. Western blot: Approx. 23kDa band observed in Human, Mouse and Rat Heart lysates (calculated MW of 17.3kDa according to NP_203123.1). The observed molecular weight corresponds to earlier findings with different antibodies from other commercial sources. Recommended concentration: 0.3-1 ug/ml.
Uses:	IHC - Paraffin (3.75 µg/ml), Western blot (0.3 - 1 µg/ml), ELISA (1:4000) (Optimal dilution to be determined by the researcher)
Size:	50 µg
Concentration:	0.5 mg/ml

Immunohistochemistry Image:



Anti-Caveolin 3 antibody IHC of human skeletal muscle. Immunohistochemistry of formalin-fixed, paraffin-embedded tissue after heat-induced antigen retrieval. Antibody LS-B8308 dilution 3.75 ug/ml.

Western Blot Image:



CAV3 antibody (0.3 ug/ml) staining of Human Heart lysate (35 ug protein/ml in RIPA buffer). Primary incubation was 1 hour. Detected by chemiluminescence.

Requested From:

Japan

Laboratory Reagent For In Vitro Research Use Only

Not for resale without prior written consent from LifeSpan BioSciences, Inc.

Created on 9/24/2014

© 2014 LifeSpan BioSciences