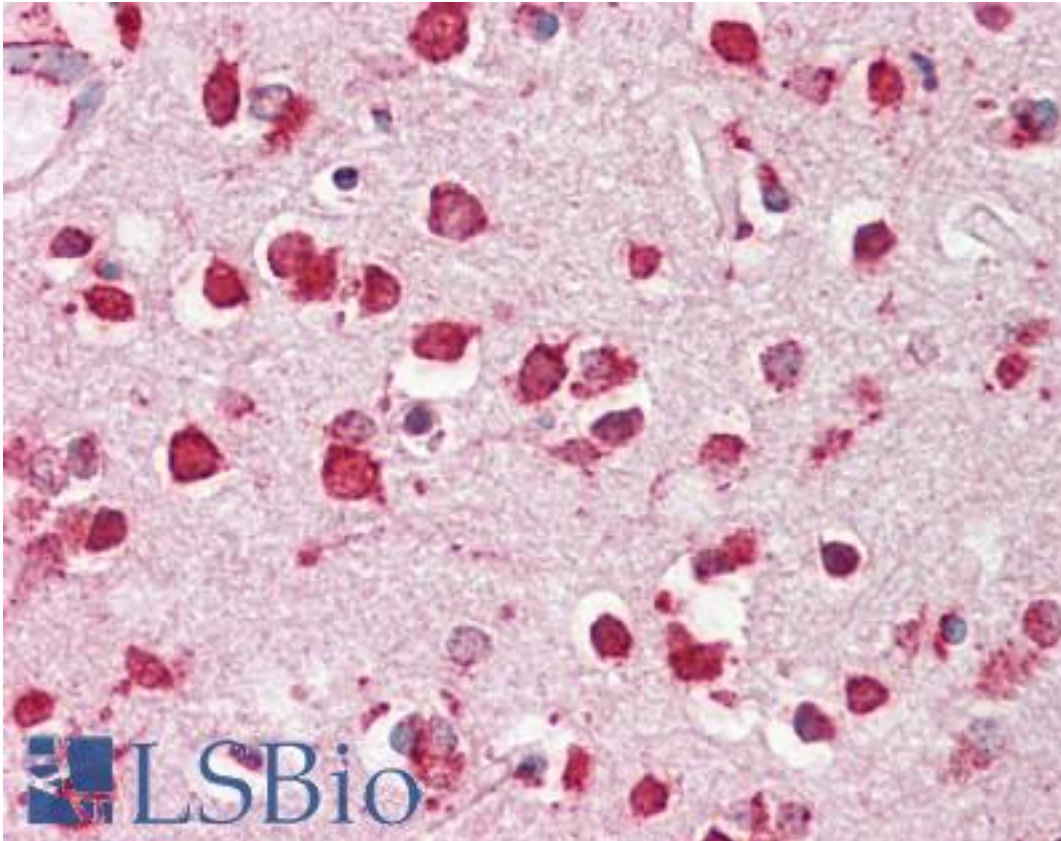


LIMPII / SCARB2 Goat anti-Human Polyclonal (Internal) Antibody - LS-B8307 - LSBio

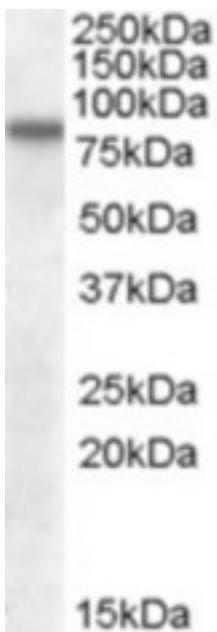
<b>CatalogID:</b>	LS-B8307
<b>Validation:</b>	This antibody replaces catalog number LS-C112833. It has been validated for use in the following assays: IHC-P.
<b>Target:</b>	scavenger receptor class B, member 2 (SCARB2)
<b>Synonyms:</b>	SCARB2 Antibody, AMRF Antibody, CD36 antigen-like 2 Antibody, LGP85 Antibody, Lysosome membrane protein 2 Antibody, LIMPII Antibody, HLGP85 Antibody, LIMP-2 Antibody, SR-BII Antibody, CD36 antigen Antibody, CD36L2 Antibody, EPM4 Antibody, LIMP II Antibody, Lysosome membrane protein II Antibody
<b>Host</b>	SCARB2 antibody was produced in Goat
<b>Clonality:</b>	Polyclonal
<b>Immunogen Species:</b>	LIMPII / SCARB2 antibody was raised against Human
<b>Antigen Type:</b>	Synthetic peptide
<b>Immunogen:</b>	LIMPII / SCARB2 antibody was raised against synthetic peptide C-NKANIQFGDNGTTIS from an internal region of human SCARB2 / SR-BII (NP_005497.1). Percent identity by BLAST analysis: Human, Gorilla, Gibbon, Marmoset, Rabbit (100%); Monkey, Mouse, Hamster, Elephant, Panda, Pig (93%); Rat, Bovine, Dog, Bat (87%); Horse (80%).
<b>Specificity:</b>	Human SCARB2 / SR-BII.
<b>Epitope:</b>	Internal
<b>Reactivity:</b>	Human, Gorilla, Gibbon, Rabbit
<b>Predicted Reactivity:</b>	Monkey, Mouse, Hamster, Pig
<b>Purification:</b>	Immunoaffinity purified
<b>Presentation:</b>	Tris-buffered saline, pH 7.3, 0.5% BSA, 0.02% sodium azide
<b>Recommended Storage:</b>	Store at -20°C. Minimize freezing and thawing.
<b>Usage Summary:</b>	Peptide ELISA: antibody detection limit dilution 1:4000. Western blot: Approx. 80kDa band observed in Human Brain (Cortex and Cerebellum) lysates (calculated MW of 54.3kDa according to NP_005497.1). The observed molecular weight corresponds to earlier findings in literature with different antibodies (Fujita et al, Biochem Biophys Res Commun. 1992 Apr 30;184(2):604-11.; PMID: 1374238). Recommended concentration: 0.1-0.3 ug/ml.
<b>Uses:</b>	IHC - Paraffin (3.75 µg/ml), Western blot (0.1 - 0.3 µg/ml), ELISA (1:4000) (Optimal dilution to be determined by the researcher)
<b>Size:</b>	50 µg
<b>Concentration:</b>	0.5 mg/ml

**Immunohistochemistry Image:**



Anti-LIMP2 / SCARB2 antibody IHC of human brain, cortex. Immunohistochemistry of formalin-fixed, paraffin-embedded tissue after heat-induced antigen retrieval. Antibody LS-B8307 dilution 3.75 ug/ml.

**Western Blot Image:**



SCARB2 antibody (0.1 ug/ml) staining of Human Cerebral Cortex lysate (35 ug protein/ml in RIPA buffer). Primary incubation was 1 hour. Detected by chemiluminescence.

<b>Requested From:</b>	Japan
Laboratory Reagent For In Vitro Research Use Only	
Not for resale without prior written consent from LifeSpan BioSciences, Inc.	
Created on 9/24/2014	
© 2014 LifeSpan BioSciences	