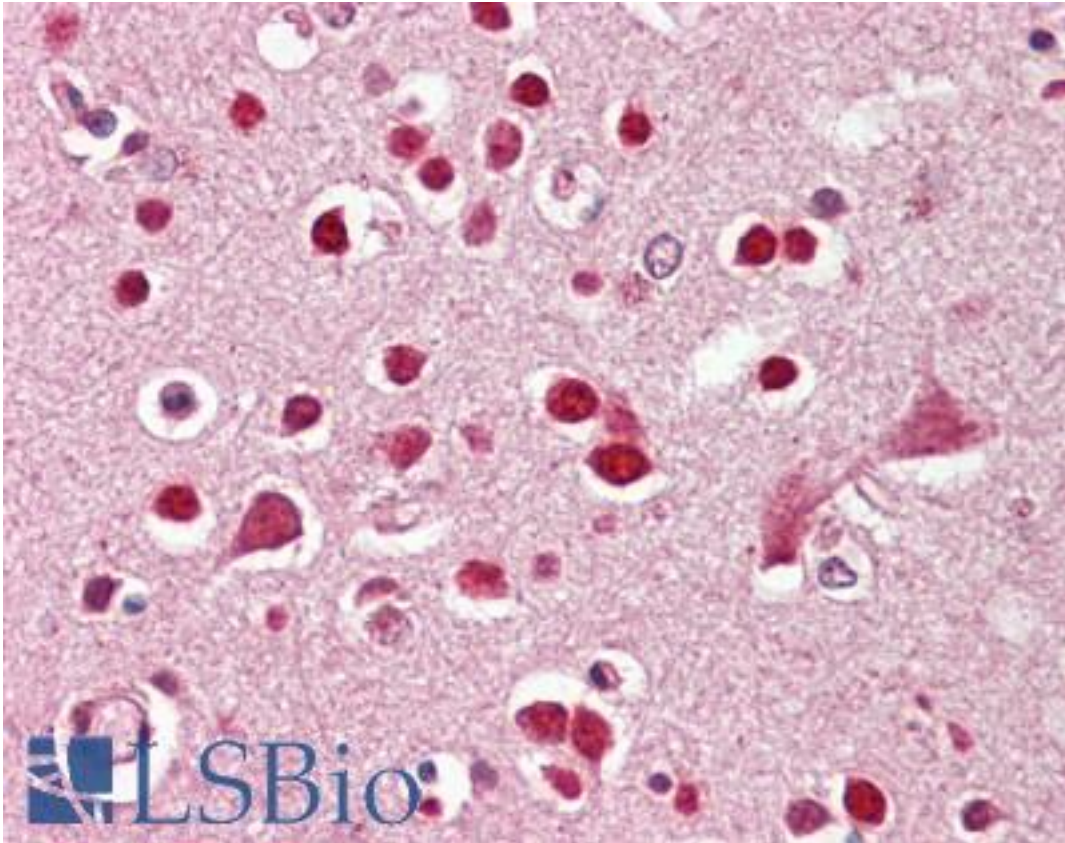


GRIK5 / KA2 Goat anti-Human Polyclonal (C-Terminus) Antibody - LS-B8306 - LSBio

CatalogID:	LS-B8306
Validation:	This antibody replaces catalog number LS-C112789. It has been validated for use in the following assays: IHC-P.
Target:	glutamate receptor, ionotropic, kainate 5 (GRIK5)
Synonyms:	GRIK5 Antibody, EAA2 Antibody, Glutamate receptor KA2 Antibody, KA2 Antibody, GluK5 Antibody, Glutamate receptor KA-2 Antibody
Family / Subfamily:	Ion Channel / Glutamate receptor - ionotropic (NMDA receptor)
Host	GRIK5 antibody was produced in Goat
Clonality:	Polyclonal
Immunogen Species:	GRIK5 / KA2 antibody was raised against Human
Antigen Type:	Synthetic peptide
Immunogen:	GRIK5 / KA2 antibody was raised against synthetic peptide C-GPAGPRELAEHE from the C-terminus of human GRIK5 (NP_002079.3). Percent identity by BLAST analysis: Human, Chimpanzee, Dog (100%); Bovine (92%); Mouse, Rat (83%).
Specificity:	Human GRIK5.
Epitope:	C-Terminus
Reactivity:	Human, Chimpanzee, Dog
Predicted Reactivity:	Bovine
Purification:	Immunoaffinity purified
Presentation:	Tris-buffered saline, pH 7.3, 0.5% BSA, 0.02% sodium azide
Recommended Storage:	Store at -20°C. Minimize freezing and thawing.
Usage Summary:	Peptide ELISA: antibody detection limit dilution 1:32000. Western blot: Preliminary experiments gave an approx. 26kDa band in Human Brain (Frontal Cortex and Hippocampus) lysates after 1 ug/ml antibody staining. Please note that currently we can not find an explanation in the literature for the band we observe given the calculated size of 109kDa according to NP_002079.3. The 26kDa band was successfully blocked by incubation with the immunizing peptide.
Uses:	IHC - Paraffin (3.75 µg/ml), ELISA (1:32000) (Optimal dilution to be determined by the researcher)
Size:	50 µg
Concentration:	0.5 mg/ml

Immunohistochemistry Image:



Anti-GRIK5 / KA2 antibody IHC of human brain, cortex. Immunohistochemistry of formalin-fixed, paraffin-embedded tissue after heat-induced antigen retrieval. Antibody LS-B8306 dilution 3.75 ug/ml.

Requested From:

Japan

Laboratory Reagent For In Vitro Research Use Only

Not for resale without prior written consent from LifeSpan BioSciences, Inc.

Created on 9/24/2014

© 2014 LifeSpan BioSciences