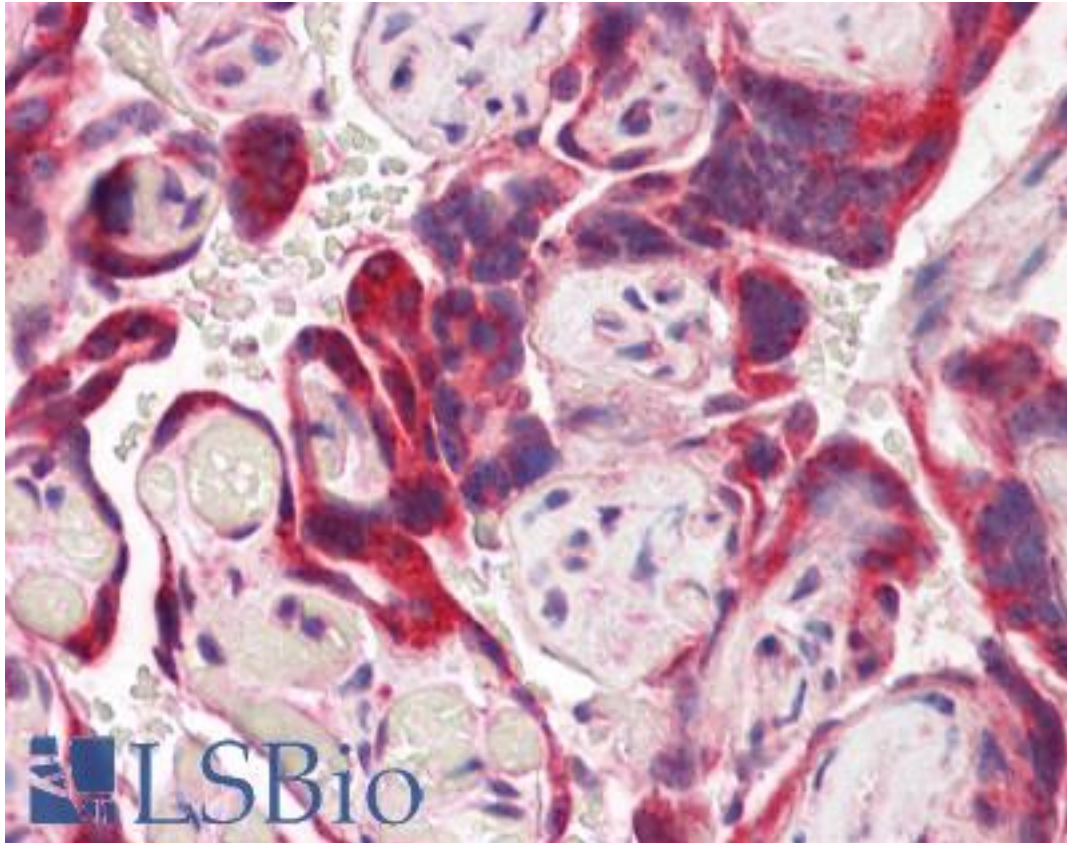


IDS Goat anti-Human Polyclonal (Internal) Antibody - LS-B8302 - LSBio	
CatalogID:	LS-B8302
Validation:	This antibody replaces catalog number LS-C112765. It has been validated for use in the following assays: IHC-P.
Target:	iduronate 2-sulfatase (IDS)
Synonyms:	IDS Antibody, Idursulfase Antibody, SIDS Antibody, Iduronate 2-sulfatase Antibody, MPS2 Antibody
Host	IDS antibody was produced in Goat
Clonality:	Polyclonal
Immunogen Species:	IDS antibody was raised against Human
Antigen Type:	Synthetic peptide
Immunogen:	IDS antibody was raised against synthetic peptide C-KHFRFRDLEEDP from an internal region of human IDS (NP_000193.1). Percent identity by BLAST analysis: Human, Gorilla, Gibbon, Monkey (100%); Marmoset, Panda (83%).
Specificity:	Human IDS. This antibody is expected to recognize isoform a (NP_000193.1).
Epitope:	Internal
Reactivity:	Human, Gorilla, Gibbon, Monkey
Purification:	Immunoaffinity purified
Presentation:	Tris-buffered saline, pH 7.3, 0.5% BSA, 0.02% sodium azide
Recommended Storage:	Store at -20°C. Minimize freezing and thawing.
Usage Summary:	Peptide ELISA: antibody detection limit dilution 1:16000. Western blot: Approx. 60kDa band observed in Human Liver lysates (calculated MW of 61.9kDa according to NP_000193.1). Recommended concentration: 0.1-0.3 ug/ml.
Uses:	IHC - Paraffin (3.75 µg/ml), Western blot (0.1 - 0.3 µg/ml), ELISA (1:16000) (Optimal dilution to be determined by the researcher)
Size:	50 µg
Concentration:	0.5 mg/ml

Immunohistochemistry Image:



Anti-IDS antibody IHC of human placenta. Immunohistochemistry of formalin-fixed, paraffin-embedded tissue after heat-induced antigen retrieval. Antibody LS-B8302 dilution 3.75 ug/ml.

Western Blot Image:



IDS antibody (0.1 ug/ml) staining of Human Liver lysate (35 ug protein/ml in RIPA buffer).
Primary incubation was 1 hour. Detected by chemiluminescence.

Requested From:

Japan

Laboratory Reagent For In Vitro Research Use Only

Not for resale without prior written consent from LifeSpan BioSciences, Inc.

Created on 9/24/2014

© 2014 LifeSpan BioSciences