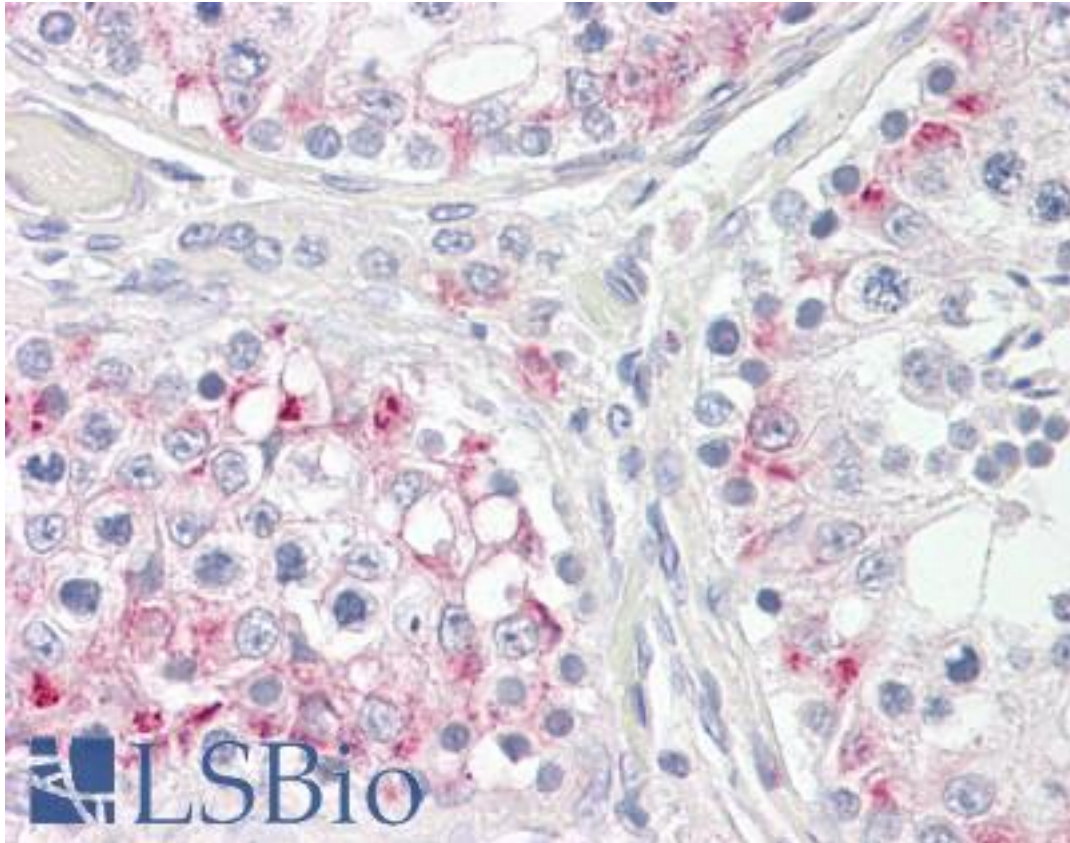


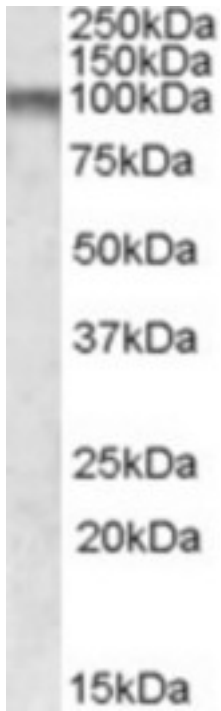
CPT1C Goat anti-Human Polyclonal (Internal) Antibody - LS-B8301 - LSBio	
<b>CatalogID:</b>	LS-B8301
<b>Validation:</b>	This antibody replaces catalog number LS-C108113. It has been validated for use in the following assays: IHC-P.
<b>Target:</b>	carnitine palmitoyltransferase 1C (CPT1C)
<b>Synonyms:</b>	CPT1C Antibody, CPT1-B Antibody, CATL1 Antibody, CPT IC Antibody, CPTI-B Antibody, CPTIC Antibody, CPT1P Antibody
<b>Host</b>	CPT1C antibody was produced in Goat
<b>Clonality:</b>	Polyclonal
<b>Immunogen Species:</b>	CPT1C antibody was raised against Human
<b>Antigen Type:</b>	Synthetic peptide
<b>Immunogen:</b>	CPT1C antibody was raised against synthetic peptide C-KSSTKTDSHRLGQH from an internal region of human CPT1C (NP_689572.1; NP_001129524.1). Percent identity by BLAST analysis: Human, Gorilla, Orangutan, Marmoset, Panda, Dog, Horse (100%); Mouse, Hamster (93%); Rat, Bovine (86%).
<b>Specificity:</b>	Human CPT1C. This antibody is expected to recognise both reported isoforms (NP_689572.1; NP_001129524.1). Reported variants represent identical protein (NP_001186681.1; NP_001186682.1; NP_689572.1).
<b>Epitope:</b>	Internal
<b>Reactivity:</b>	Human, Gorilla, Orangutan, Monkey, Dog, Horse
<b>Predicted Reactivity:</b>	Mouse, Hamster
<b>Purification:</b>	Immunoaffinity purified
<b>Presentation:</b>	Tris-buffered saline, pH 7.3, 0.5% BSA, 0.02% sodium azide
<b>Recommended Storage:</b>	Store at -20°C. Minimize freezing and thawing.
<b>Usage Summary:</b>	Western Blot: Approx. 100kD band observed in Human Brain (Frontal Cortex) lysates (calculated MW of 91.0kD according to NP_689572.1). Recommended concentration: 1-3 ug/ml.
<b>Uses:</b>	IHC - Paraffin (3.75 µg/ml), Western blot (1 - 3 µg/ml), ELISA (Optimal dilution to be determined by the researcher)
<b>Size:</b>	50 µg
<b>Concentration:</b>	0.5 mg/ml

**Immunohistochemistry Image:**



Anti-CPT1C antibody IHC of human testis. Immunohistochemistry of formalin-fixed, paraffin-embedded tissue after heat-induced antigen retrieval. Antibody LS-B8301 dilution 3.75 ug/ml.

**Western Blot Image:**



CPT1C antibody (1 ug/ml) staining of Human Frontal Cortex lysate (35 ug protein in RIPA buffer). Primary incubation was 1 hour. Detected by chemiluminescence.

**Requested From:**

Japan

Laboratory Reagent For In Vitro Research Use Only

Not for resale without prior written consent from LifeSpan BioSciences, Inc.

Created on 9/24/2014

© 2014 LifeSpan BioSciences