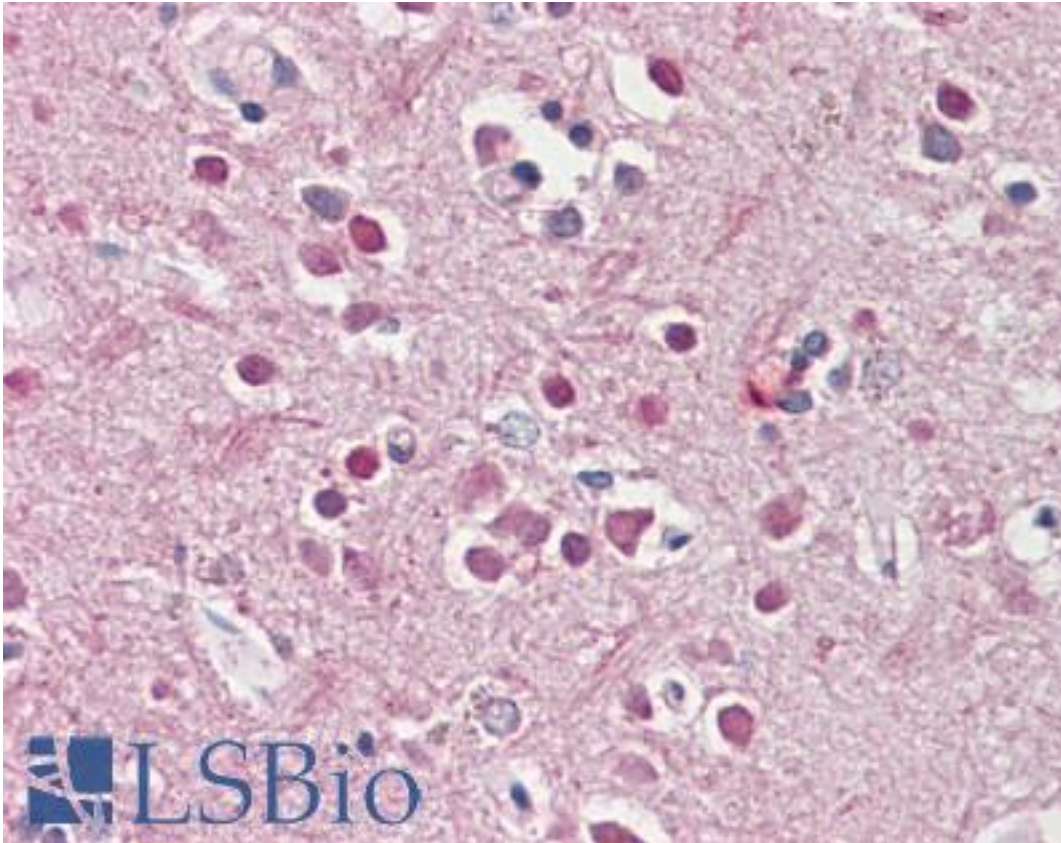


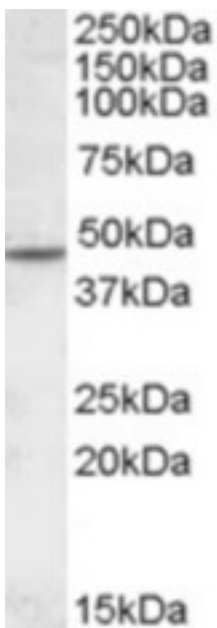
CHRN2 Goat anti-Human Polyclonal (Internal) Antibody - LS-B8300 - LSBio	
<b>CatalogID:</b>	LS-B8300
<b>Validation:</b>	This antibody replaces catalog number LS-C112644. It has been validated for use in the following assays: IHC-P.
<b>Target:</b>	cholinergic receptor, nicotinic, beta 2 (neuronal) (CHRN2)
<b>Synonyms:</b>	CHRN2 Antibody, AChR-beta1 Antibody, Acrb2 Antibody, EFNL3 Antibody, NACHR beta 2 Antibody, NACHRB2 Antibody
<b>Family / Subfamily:</b>	Ion Channel / Nicotinic acetylcholine receptor
<b>Host</b>	CHRN2 antibody was produced in Goat
<b>Clonality:</b>	Polyclonal
<b>Immunogen Species:</b>	CHRN2 antibody was raised against Human
<b>Antigen Type:</b>	Synthetic peptide
<b>Immunogen:</b>	CHRN2 antibody was raised against synthetic peptide QPRHHCARQRLR from an internal region of human CHRN2 (NP_000739.1). Percent identity by BLAST analysis: Human, Gorilla, Monkey, Marmoset, Elephant, Bat (100%); Mouse, Rat, Hamster, Bovine, Dog, Pig, Opossum (92%); Ferret, Xenopus (83%).
<b>Specificity:</b>	Human CHRN2.
<b>Epitope:</b>	Internal
<b>Reactivity:</b>	Human, Gorilla, Monkey, Bat
<b>Predicted Reactivity:</b>	Mouse, Rat, Bovine, Dog, Hamster, Pig
<b>Purification:</b>	Immunoaffinity purified
<b>Presentation:</b>	Tris-buffered saline, pH 7.3, 0.5% BSA, 0.02% sodium azide
<b>Recommended Storage:</b>	Store at -20°C. Minimize freezing and thawing.
<b>Usage Summary:</b>	Peptide ELISA: antibody detection limit dilution 1:64000. Western blot: Approx. 48 kDa band observed in Human Brain (Cerebellum, Cerebral Cortex) lysates (calculated MW of 57.0 kDa according to NP_000739.1). The observed molecular weight corresponds to earlier findings with different antibodies from other commercial sources. Recommended concentration: 1-3 ug/ml.
<b>Uses:</b>	IHC - Paraffin (3.75 µg/ml), Western blot (1 - 3 µg/ml), ELISA (1:64000) (Optimal dilution to be determined by the researcher)
<b>Size:</b>	50 µg
<b>Concentration:</b>	0.5 mg/ml

**Immunohistochemistry Image:**



Anti-CHRNA2 antibody IHC of human brain, cortex. Immunohistochemistry of formalin-fixed, paraffin-embedded tissue after heat-induced antigen retrieval. Antibody LS-B8300 dilution 3.75 ug/ml.

**Western Blot Image:**



CHRNA2 antibody (1 ug/ml) staining of Human Cerebellum lysate (35 ug protein/ml in RIPA buffer). Primary incubation was 1 hour. Detected by chemiluminescence.

<b>Requested From:</b>	Japan
Laboratory Reagent For In Vitro Research Use Only	
Not for resale without prior written consent from LifeSpan BioSciences, Inc.	
Created on 9/24/2014	
© 2014 LifeSpan BioSciences	