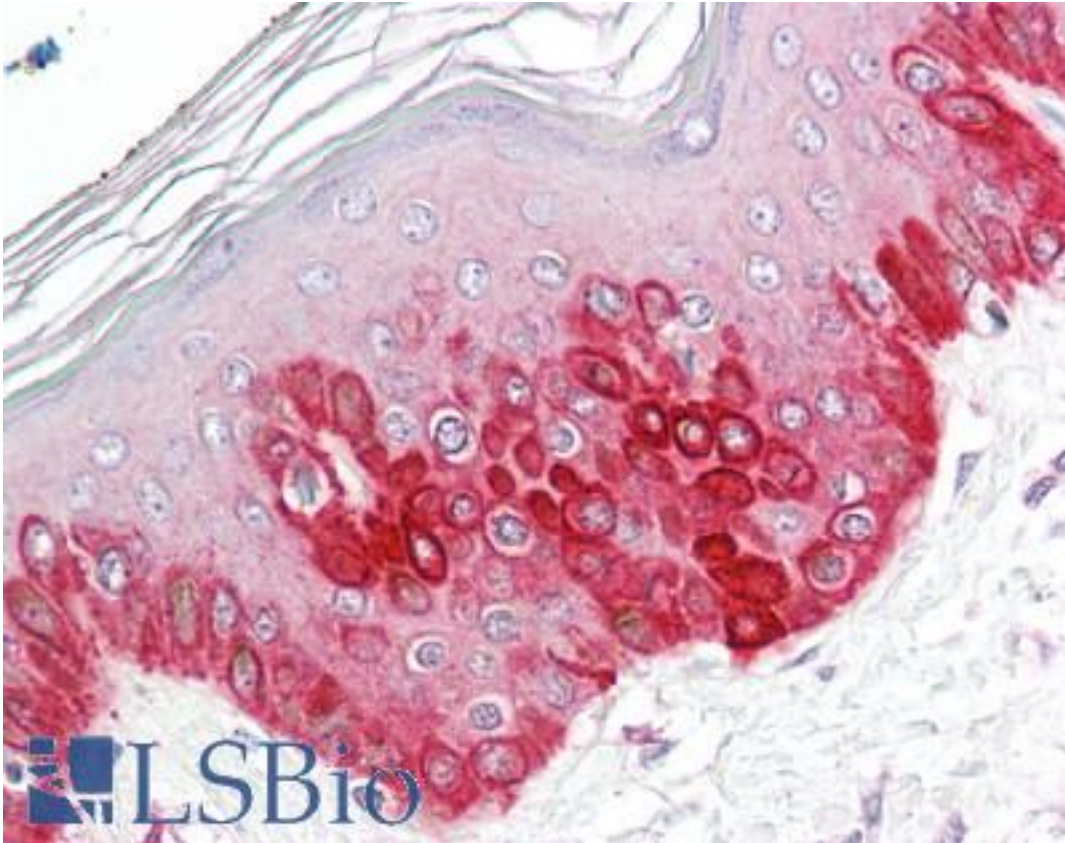


ATG16L1 / ATG16L Goat anti-Human Polyclonal (C-Terminus) Antibody - LS-B8297 - LSBio	
CatalogID:	LS-B8297
Validation:	This antibody replaces catalog number LS-C87209. It has been validated for use in the following assays: IHC-P.
Target:	autophagy related 16-like 1 (<i>S. cerevisiae</i>) (ATG16L1)
Synonyms:	ATG16L1 Antibody, APG16-like 1 Antibody, APG16L Antibody, APG16L beta Antibody, ATG16L Antibody, Autophagy-related protein 16-1 Antibody, IBD10 Antibody, WD repeat domain 30 Antibody, ATG16A Antibody, WDR30 Antibody
Host	ATG16L1 antibody was produced in Goat
Clonality:	Polyclonal
Immunogen Species:	ATG16L1 / ATG16L antibody was raised against Human
Antigen Type:	Synthetic peptide
Immunogen:	ATG16L1 / ATG16L antibody was raised against synthetic peptide C-KVEKVL SK QHSSSIN from an internal region (near the C-terminus) of human ATG16L1 (NP_110430.5; NP_060444.3). Percent identity by BLAST analysis: Human, Gorilla, Orangutan, Gibbon, Monkey, Mouse, Rat, Hamster, Elephant, Opossum (100%); Panda, Dog, Bovine, Platypus (93%); Bat, Pig (87%); Rabbit, Xenopus (80%).
Specificity:	Human ATG16L1. This antibody is expected to recognise both reported isoforms (NP_110430.5 and NP_060444.3).
Epitope:	C-Terminus
Reactivity:	Human, Gorilla, Orangutan, Gibbon, Monkey, Mouse, Rat, Hamster
Predicted Reactivity:	Bovine, Dog
Purification:	Immunoaffinity purified
Presentation:	Tris-buffered saline, pH 7.3, 0.5% BSA, 0.02% sodium azide
Recommended Storage:	Store at -20°C. Minimize freezing and thawing.
Usage Summary:	Peptide ELISA: antibody detection limit dilution 1:32000. Western Blot: Preliminary experiments gave an approx 48kD band in Human Kidney, Liver and Spleen lysates after 0.3 ug/ml antibody staining. Please note that currently we cannot find an explanation in the literature for the band we observe given the calculated size of 68.3kD according to NP_110430.5 and of 66.3kD according to NP_060444.3. The 48kD band was successfully blocked by incubation with the immunizing peptide. We would appreciate any feedback from people in the field - have any results been reported with other antibodies / lysates? Have any further splice variants / modified forms been reported?
Uses:	IHC - Paraffin (3.75 µg/ml), ELISA (1:32000) (Optimal dilution to be determined by the researcher)
Size:	50 µg
Concentration:	0.5 mg/ml

Immunohistochemistry Image:



Anti-ATG16L1 / ATG16L antibody IHC of human skin. Immunohistochemistry of formalin-fixed, paraffin-embedded tissue after heat-induced antigen retrieval. Antibody LS-B8297 dilution 3.75 ug/ml.

Requested From:

Japan

Laboratory Reagent For In Vitro Research Use Only

Not for resale without prior written consent from LifeSpan BioSciences, Inc.

Created on 9/24/2014

© 2014 LifeSpan BioSciences