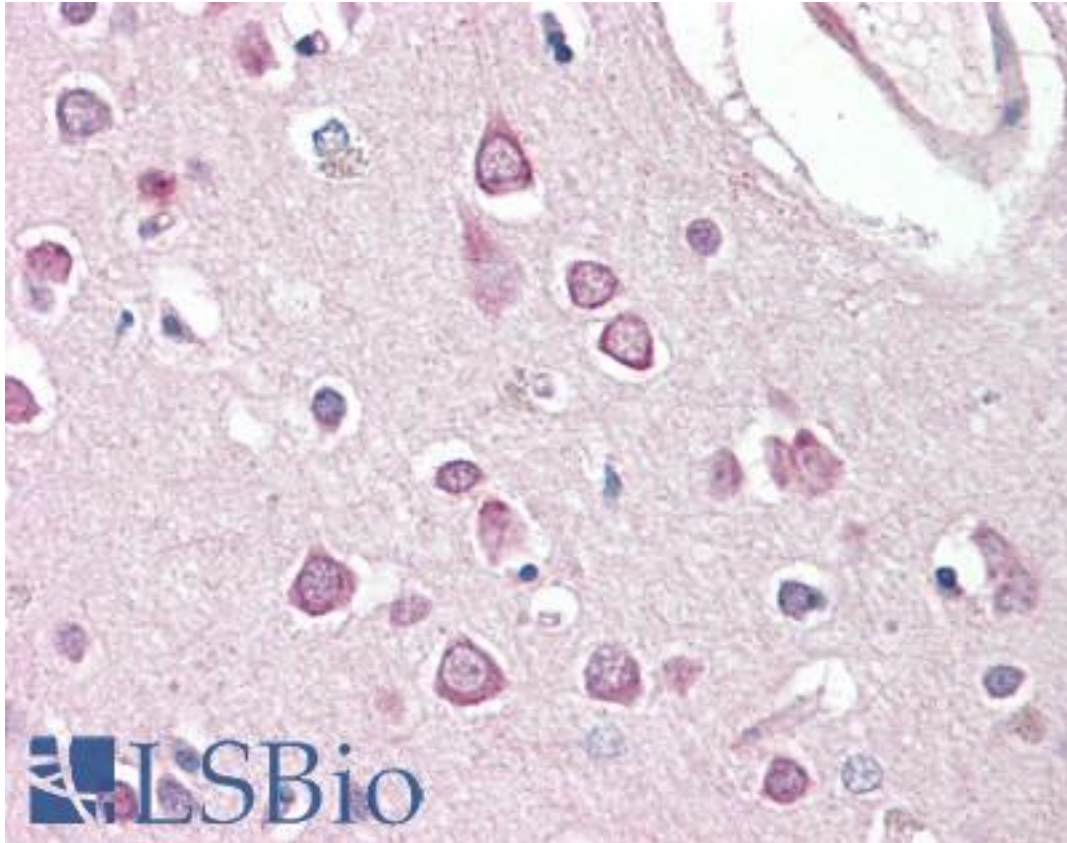


HAP1 Goat anti-Human Polyclonal (Internal) Antibody - LS-B8296 - LSBio

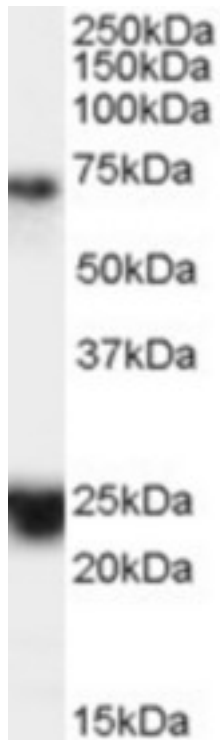
CatalogID:	LS-B8296
Validation:	This antibody replaces catalog number LS-C54958. It has been validated for use in the following assays: IHC-P.
Target:	huntingtin-associated protein 1 (HAP1)
Synonyms:	HAP1 Antibody, HLP Antibody, HAP2 Antibody, HHLP1 Antibody, HLP1 Antibody, HIP5 Antibody, Neuroan 1 Antibody, HAP-1 Antibody
Host	HAP1 antibody was produced in Goat
Clonality:	Polyclonal
Immunogen Species:	HAP1 antibody was raised against Human
Antigen Type:	Synthetic peptide
Immunogen:	HAP1 antibody was raised against synthetic peptide C-RYDFRYSEDREQ from an internal region of human HAP1 (NP_003940.2; NP_817084.1). Percent identity by BLAST analysis: Human, Gorilla, Gibbon (100%).
Specificity:	Human HAP1. This antibody is expected to recognize all reported isoforms (NP_003940.1, NP_817084.1)
Epitope:	Internal
Reactivity:	Human, Gorilla, Gibbon
Purification:	Immunoaffinity purified
Presentation:	Tris-buffered saline, pH 7.3, 0.5% BSA, 0.02% sodium azide
Recommended Storage:	Store at -20°C. Minimize freezing and thawing.
Uses:	IHC - Paraffin (3.75 µg/ml), Western blot (0.1 µg/ml), ELISA (1:32000) (Optimal dilution to be determined by the researcher)
Size:	50 µg
Concentration:	0.5 mg/ml

Immunohistochemistry Image:



Anti-HAP1 antibody IHC of human brain, cortex. Immunohistochemistry of formalin-fixed, paraffin-embedded tissue after heat-induced antigen retrieval. Antibody LS-B8296 dilution 3.75 ug/ml.

Western Blot Image:



Antibody (0.1 ug/ml) staining of Human Brain (Hippocampus) lysate (35 ug protein in RIPA buffer). Primary incubation was 1 hour. Detected by chemiluminescence.

Requested From:

Japan

Laboratory Reagent For In Vitro Research Use Only

Not for resale without prior written consent from LifeSpan BioSciences, Inc.

Created on 9/24/2014

© 2014 LifeSpan BioSciences