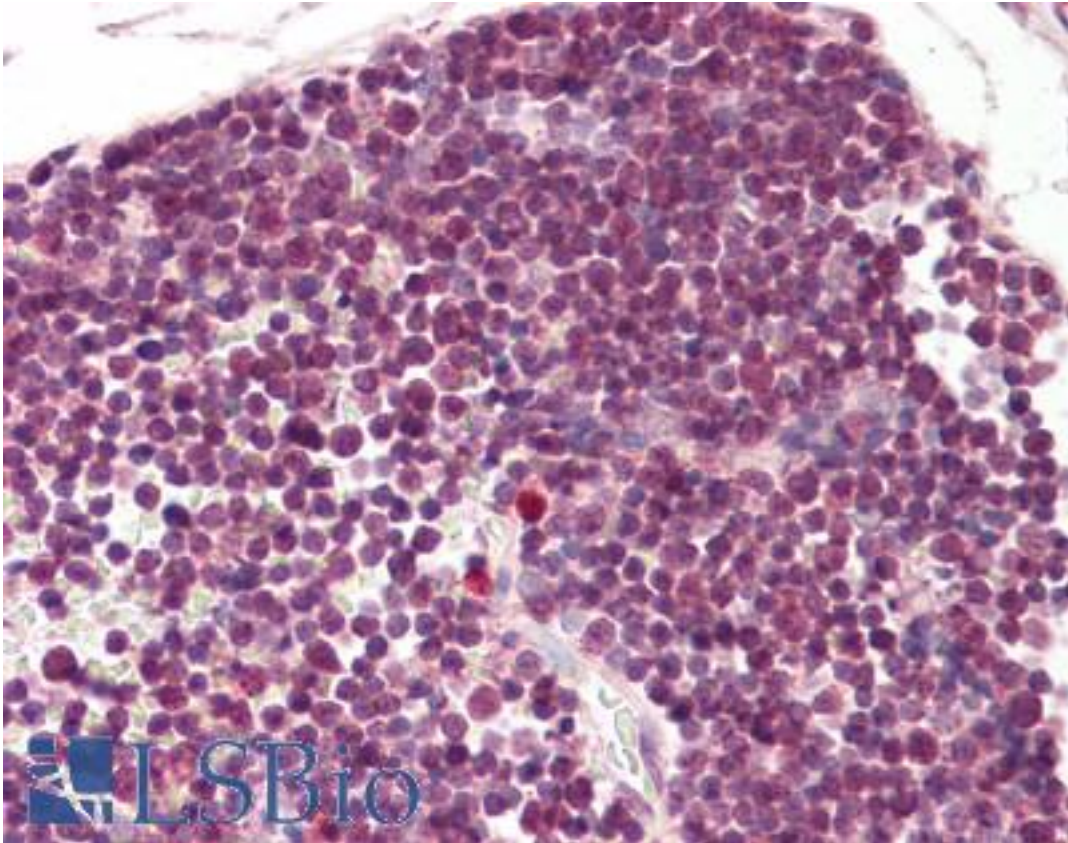


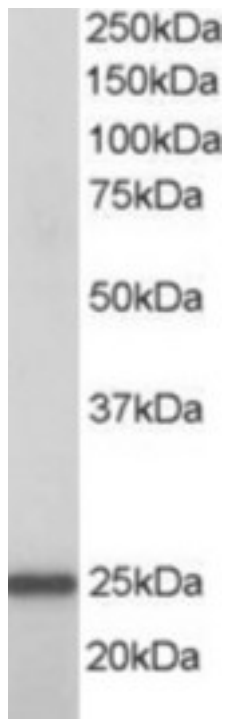
| RAN Goat anti-Human Polyclonal (N-Terminus) Antibody - LS-B8294 - LSBio | |
|---|---|
| CatalogID: | LS-B8294 |
| Validation: | This antibody replaces catalog number LS-C20203. It has been validated for use in the following assays: IHC-P. |
| Target: | RAN, member RAS oncogene family |
| Synonyms: | RAN Antibody, Gsp1 Antibody, Guanosine triphosphatase Ran Antibody, RanGTPase Antibody, Member RAS oncogene family Antibody, OK/SW-cl.81 Antibody, Ras-related nuclear protein Antibody, ARA24 Antibody, TC4 Antibody, GTPase Ran Antibody, Ras-like protein TC4 Antibody |
| Family / Subfamily: | Ras GTPase superfamily IPR001806 / RAS oncogene |
| Host | RAN antibody was produced in Goat |
| Clonality: | Polyclonal |
| Immunogen Species: | RAN antibody was raised against Human |
| Antigen Type: | Synthetic peptide |
| Immunogen: | RAN antibody was raised against synthetic peptide AAQGEPQVQFKLV-C from the N-terminus of human RAN (NP_006316.1). Percent identity by BLAST analysis: Human, Gorilla, Orangutan, Gibbon, Monkey, Marmoset, Mouse, Rat, Hamster, Elephant, Panda, Bovine, Dog, Pig, Opossum, Chicken, Platypus, Xenopus, Frog (100%); Trout, Salmon, Pike (85%). |
| Specificity: | Human RAN. |
| Epitope: | N-Terminus |
| Reactivity: | Human, Gorilla, Orangutan, Gibbon, Monkey, Mouse, Rat, Bovine, Dog, Hamster, Pig, Chicken, Xenopus |
| Purification: | Immunoaffinity purified |
| Presentation: | Tris-buffered saline, pH 7.3, 0.5% BSA, 0.02% sodium azide |
| Recommended Storage: | Store at -20°C. Minimize freezing and thawing. |
| Uses: | IHC - Paraffin (3.75 µg/ml), Western blot (1 - 3 µg/ml), ELISA (1:16000) (Optimal dilution to be determined by the researcher) |
| Size: | 50 µg |
| Concentration: | 0.5 mg/ml |

Immunohistochemistry Image:



Anti-RAN antibody IHC of human thymus. Immunohistochemistry of formalin-fixed, paraffin-embedded tissue after heat-induced antigen retrieval. Antibody LS-B8294 dilution 3.75 ug/ml.

Western Blot Image:



Staining (1 ug/ml) of A431 lysate (RIPA buffer, 35 ug total protein per lane). Primary incubated for 1 hour. Detected by chemiluminescence.

Requested From:

Japan

Laboratory Reagent For In Vitro Research Use Only

Not for resale without prior written consent from LifeSpan BioSciences, Inc.

Created on 9/24/2014

© 2014 LifeSpan BioSciences