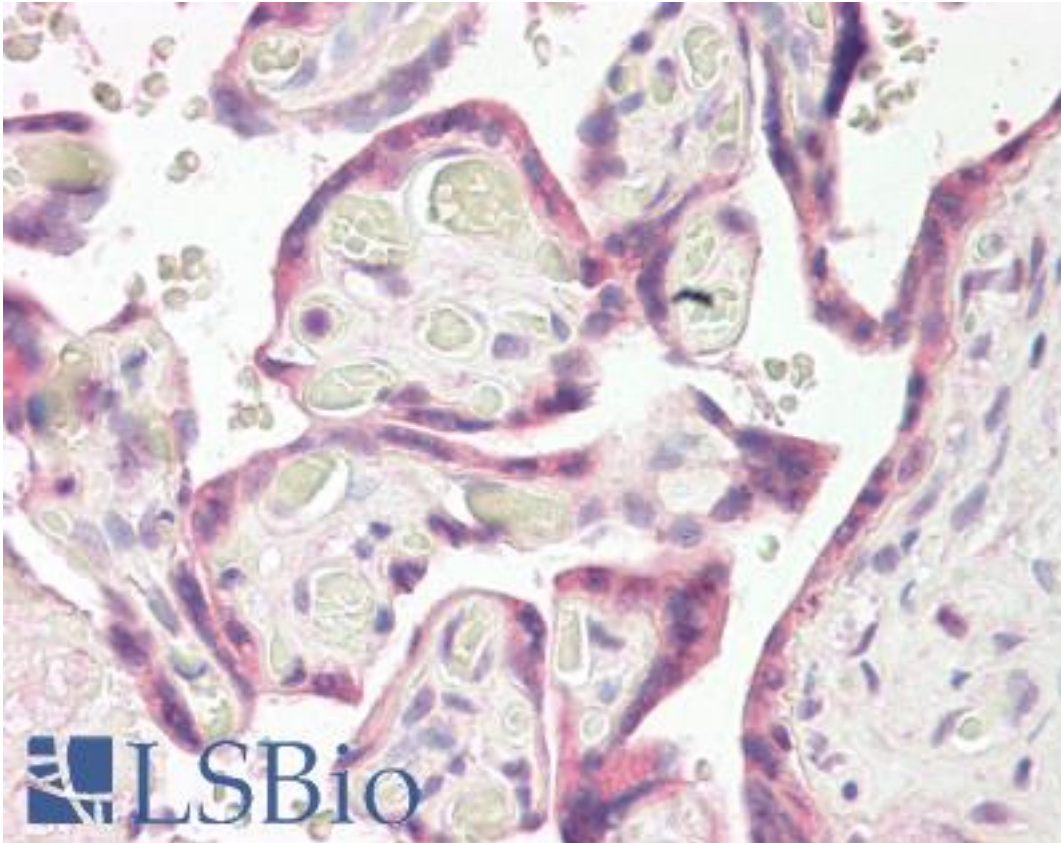


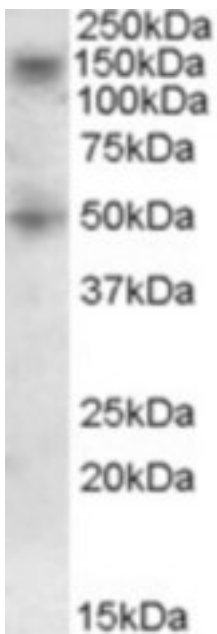
RNF139 / TRC8 Goat anti-Human Polyclonal (C-Terminus) Antibody - LS-B8293 - LSBio	
CatalogID:	LS-B8293
Validation:	This antibody replaces catalog number LS-C112821. It has been validated for use in the following assays: IHC-P.
Target:	ring finger protein 139 (RNF139)
Synonyms:	RNF139 Antibody, HRCA1 Antibody, RCA1 Antibody, TRC8 Antibody, Ring finger protein 139 Antibody
Host	RNF139 antibody was produced in Goat
Clonality:	Polyclonal
Immunogen Species:	RNF139 / TRC8 antibody was raised against Human
Antigen Type:	Synthetic peptide
Immunogen:	RNF139 / TRC8 antibody was raised against synthetic peptide C-HTGAAAEFNDT from the C-terminus of human RNF139 (NP_009149.2). Percent identity by BLAST analysis: Human, Gorilla, Orangutan, Gibbon, Monkey (100%); Rabbit (92%); Marmoset, Dog (85%).
Specificity:	Human RNF139.
Epitope:	C-Terminus
Reactivity:	Human, Gorilla, Orangutan, Gibbon, Monkey
Predicted Reactivity:	Rabbit
Purification:	Immunoaffinity purified
Presentation:	Tris-buffered saline, pH 7.3, 0.5% BSA, 0.02% sodium azide
Recommended Storage:	Store at -20°C. Minimize freezing and thawing.
Usage Summary:	Peptide ELISA: antibody detection limit dilution 1:16000. Western blot: Experiments gave bands at approx. 150kDa and 50kDa in Human Skeletal Muscle lysate after 0.5 ug/ml antibody staining. This protein has a calculated MW of 76.0kDa according to NP_009149.2. The observed molecular weight corresponds to earlier findings with different antibodies from other commercial sources. Recommended concentration: 0.5-1.5 ug/ml.
Uses:	IHC - Paraffin (3.75 µg/ml), Western blot (0.5 - 1.5 µg/ml), ELISA (1:16000) (Optimal dilution to be determined by the researcher)
Size:	50 µg
Concentration:	0.5 mg/ml

Immunohistochemistry Image:



Anti-RNF139 / TRC8 antibody IHC of human placenta. Immunohistochemistry of formalin-fixed, paraffin-embedded tissue after heat-induced antigen retrieval. Antibody LS-B8293 dilution 3.75 ug/ml.

Western Blot Image:



RNF139 antibody (0.5 ug/ml) staining of Human Skeletal muscle lysate (35 ug protein/ml in RIPA buffer). Primary incubation was 1 hour. Detected by chemiluminescence.

Requested From:	Japan
Laboratory Reagent For In Vitro Research Use Only	
Not for resale without prior written consent from LifeSpan BioSciences, Inc.	
Created on 9/24/2014	
© 2014 LifeSpan BioSciences	