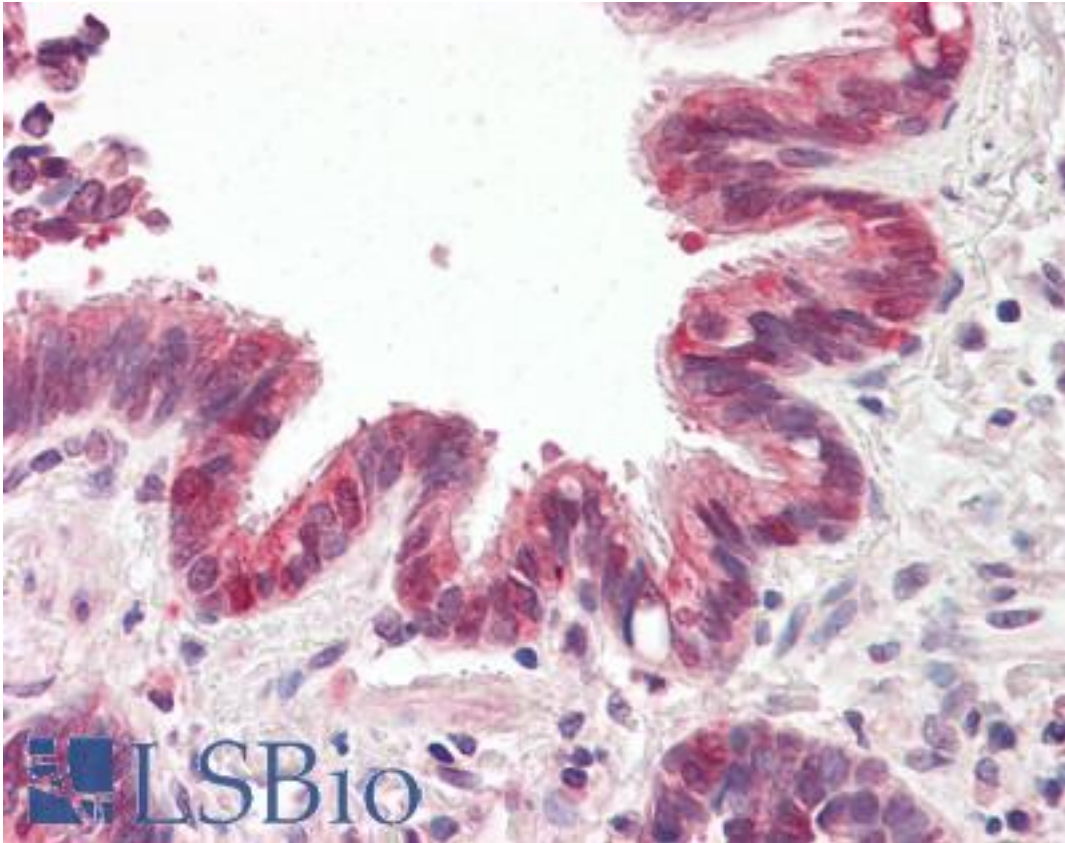


BRUCE / BIRC6 Goat anti-Human Polyclonal (C-Terminus) Antibody - LS-B8292 - LSBio

CatalogID:	LS-B8292
Validation:	This antibody replaces catalog number LS-C54582. It has been validated for use in the following assays: IHC-P.
Target:	baculoviral IAP repeat containing 6 (BIRC6)
Synonyms:	BIRC6 Antibody, APOLLON Antibody, BRUCE Antibody, KIAA1289 Antibody
Host	BIRC6 antibody was produced in Goat
Clonality:	Polyclonal
Immunogen Species:	BRUCE / BIRC6 antibody was raised against Human
Antigen Type:	Synthetic peptide
Immunogen:	BRUCE / BIRC6 antibody was raised against synthetic peptide C-PSSSKELPSDFQL from the C-terminus of human BIRC6 (NP_057336.3). Percent identity by BLAST analysis: Human, Monkey, Marmoset (100%); Mouse, Hamster, Elephant, Panda, Dog, Pig, Opossum (92%); Gibbon, Rat, Bat, Horse (85%).
Specificity:	Human BIRC6.
Epitope:	C-Terminus
Reactivity:	Human, Monkey
Predicted Reactivity:	Mouse, Dog, Hamster, Pig
Purification:	Immunoaffinity purified
Presentation:	Tris-buffered saline, pH 7.3, 0.5% BSA, 0.02% sodium azide
Recommended Storage:	Store at -20°C. Minimize freezing and thawing.
Uses:	IHC - Paraffin (3.75 µg/ml), ELISA (1:16000) (Optimal dilution to be determined by the researcher)
Size:	50 µg
Concentration:	0.5 mg/ml

Immunohistochemistry Image:



Anti-BRUC6 / BIRC6 antibody IHC of human lung, respiratory epithelium.
Immunohistochemistry of formalin-fixed, paraffin-embedded tissue after heat-induced antigen retrieval. Antibody LS-B8292 dilution 3.75 ug/ml.

Requested From:

Japan

Laboratory Reagent For In Vitro Research Use Only

Not for resale without prior written consent from LifeSpan BioSciences, Inc.

Created on 9/24/2014

© 2014 LifeSpan BioSciences