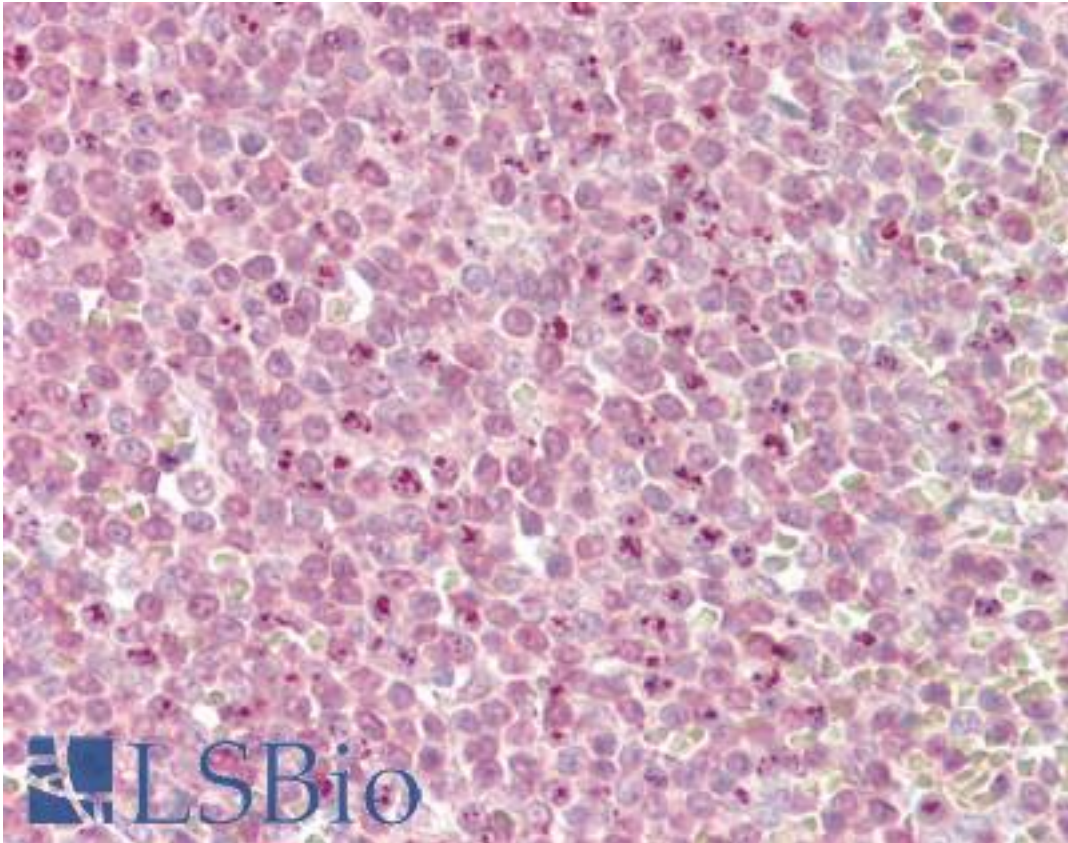


KMT2D / MLL2 Goat anti-Human Polyclonal (N-Terminus) Antibody - LS-B8291 - LSBio	
CatalogID:	LS-B8291
Validation:	This antibody replaces catalog number LS-C55110. It has been validated for use in the following assays: IHC-P.
Target:	lysine (K)-specific methyltransferase 2D (KMT2D)
Synonyms:	KMT2D Antibody, AAD10 Antibody, ALL1-related protein Antibody, KABUK1 Antibody, KMS Antibody, Lysine N-methyltransferase 2D Antibody, MLL2 Antibody, Kabuki make-up syndrome Antibody, ALR Antibody, CAGL114 Antibody, KMT2B Antibody, Lysine N-methyltransferase 2B Antibody, TNRC21 Antibody
Host	KMT2D antibody was produced in Goat
Clonality:	Polyclonal
Immunogen Species:	KMT2D / MLL2 antibody was raised against Human
Antigen Type:	Synthetic peptide
Immunogen:	KMT2D / MLL2 antibody was raised against synthetic peptide DSQNLAGEDKDSQ -C from the N-terminus of human MLL2 (NP_003473.3). Percent identity by BLAST analysis: Human, Gorilla, Gibbon (85%).
Specificity:	Human MLL2. The immunizing peptide was designed from NP_003473.1. Since then the sequence has changed in the databases and currently differs at two locations in NP_003473.3.
Epitope:	N-Terminus
Reactivity:	Human
Purification:	Immunoaffinity purified
Presentation:	Tris-buffered saline, pH 7.3, 0.5% BSA, 0.02% sodium azide
Recommended Storage:	Store at -20°C. Minimize freezing and thawing.
Uses:	IHC - Paraffin (3.75 µg/ml), ELISA (1:16000) (Optimal dilution to be determined by the researcher)
Size:	50 µg
Concentration:	0.5 mg/ml

Immunohistochemistry Image:



Anti-MLL2 antibody IHC of human spleen. Immunohistochemistry of formalin-fixed, paraffin-embedded tissue after heat-induced antigen retrieval. Antibody LS-B8291 dilution 3.75 ug/ml.

Requested From:

Japan

Laboratory Reagent For In Vitro Research Use Only

Not for resale without prior written consent from LifeSpan BioSciences, Inc.

Created on 9/24/2014

© 2014 LifeSpan BioSciences