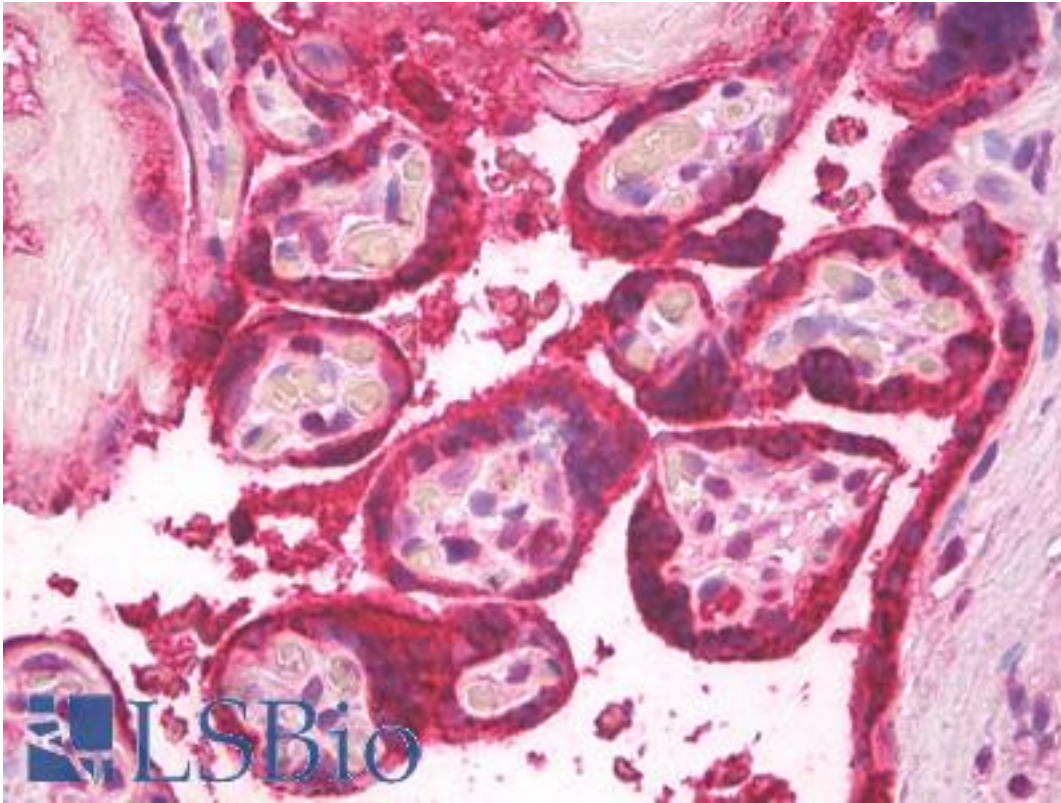


LHB / Luteinizing Hormone Sheep anti-Human Polyclonal Antibody - LS-B8242 - LSBio

CatalogID:	LS-B8242
Validation:	This antibody replaces catalog number LS-C42009. It has been validated for use in the following assays: IHC-P.
Target:	luteinizing hormone beta polypeptide (LHB)
Synonyms:	LHB Antibody, CGB4 Antibody, LSH-beta Antibody, Luteinizing Hormone Antibody, LH-B Antibody, Lutropin beta chain Antibody, HLHB Antibody, LSH-B Antibody, Lutropin subunit beta Antibody
Host	LHB antibody was produced in Sheep
Clonality:	Polyclonal
Isotype:	IgG
Immunogen Species:	LHB / Luteinizing Hormone antibody was raised against Human
Immunogen:	LHB / Luteinizing Hormone antibody was raised against highly purified human pituitary luteinizing hormone.
Specificity:	Recognizes human luteinizing hormone, a gonadotropic hormone found in the anterior lobe of the pituitary gland. TSH 20%; hCG6%; FSH6%; Prolactin hPL.
Reactivity:	Human
Purification:	Protein G purified
Presentation:	PBS, 0.09% sodium azide.
Recommended Storage:	Short term 4°C, long term aliquot and store at -20°C, avoid freeze thaw cycles. Store undiluted.
Uses:	IHC - Paraffin (2.5 µg/ml), ELISA, Radioimmunoassay (Optimal dilution to be determined by the researcher)
Size:	50 µl
Concentration:	5 mg/ml

Immunohistochemistry Image:



Anti-Luteinizing Hormone antibody IHC of human placenta. Immunohistochemistry of formalin-fixed, paraffin-embedded tissue after heat-induced antigen retrieval. Antibody LS-B8242 dilution 2.5 ug/ml.

Requested From:

Japan

Laboratory Reagent For In Vitro Research Use Only

Not for resale without prior written consent from LifeSpan BioSciences, Inc.

Created on 9/24/2014

© 2014 LifeSpan BioSciences