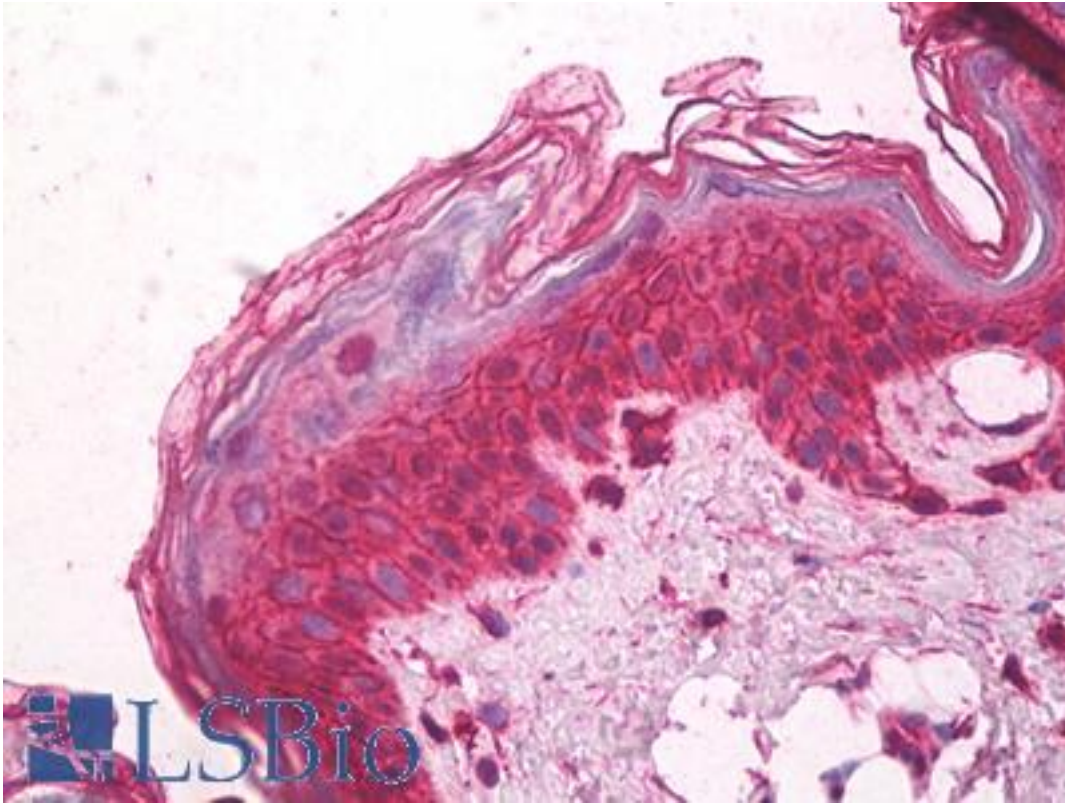


CCR3 Goat anti-Mouse Polyclonal (aa5-28) Antibody - LS-B8238 - LSBio	
CatalogID:	LS-B8238
Validation:	This antibody replaces catalog number LS-C83983. It has been validated for use in the following assays: IHC-P.
Target:	chemokine (C-C motif) receptor 3 (CCR3)
Synonyms:	CCR3 Antibody, C-C chemokine receptor type 3 Antibody, B-chemokine receptor Antibody, CD193 Antibody, CD193 antigen Antibody, Chemokine c-c motif receptor 3 Antibody, C-C chemokine receptor 3 Antibody, CKR3 Antibody, CC-CKR-3 Antibody, CCR-3 Antibody, CMKBR3 Antibody, Eosinophil eotaxin receptor Antibody, Eotaxin receptor Antibody, C-C CKR-3 Antibody, CC chemokine receptor 3 Antibody
Family / Subfamily:	GPCR / Chemokine
Host	CCR3 antibody was produced in Goat
Clonality:	Polyclonal
Immunogen Species:	CCR3 antibody was raised against Mouse
Antigen Type:	Synthetic peptide
Immunogen:	CCR3 antibody was raised against synthetic peptide TDEIKTVVESFETTPYEYEWAPPC corresponding to aa 5-28 of the N-terminal domain of mouse CCR3. Percent identity by BLAST analysis: Mouse (100%); Rat, Hamster (83%).
Specificity:	This antibody recognizes mouse CCR3 and the peptide sequence is <50 % identical to other chemokine receptors in this region.
Epitope:	aa5-28
Reactivity:	Mouse, Human
Purification:	Immunoaffinity purified
Presentation:	10 mM KHPO ₄ , 140 mM NaCl with 0.1% sodium azide and 1 mg/ml BSA
Recommended Storage:	Short term 4°C, long term aliquot and store at -20°C, avoid freeze thaw cycles.
Uses:	IHC - Paraffin (5 µg/ml), ICC (1:200), Western blot (1:500) (Optimal dilution to be determined by the researcher)
Size:	50 µg
Concentration:	1 mg/ml

Immunohistochemistry Image:



Anti-CCR3 antibody IHC of human skin. Immunohistochemistry of formalin-fixed, paraffin-embedded tissue after heat-induced antigen retrieval. Antibody LS-B8238 dilution 5 ug/ml.

Requested From:

Japan

Laboratory Reagent For In Vitro Research Use Only

Not for resale without prior written consent from LifeSpan BioSciences, Inc.

Created on 9/24/2014

© 2014 LifeSpan BioSciences