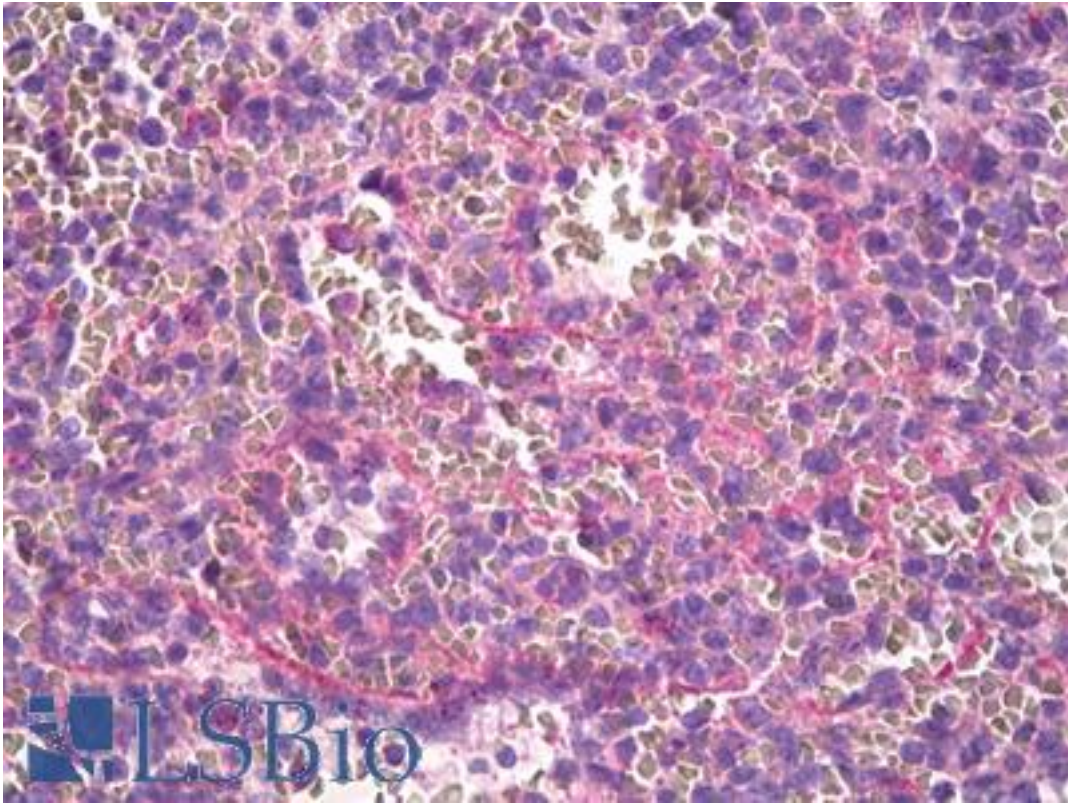


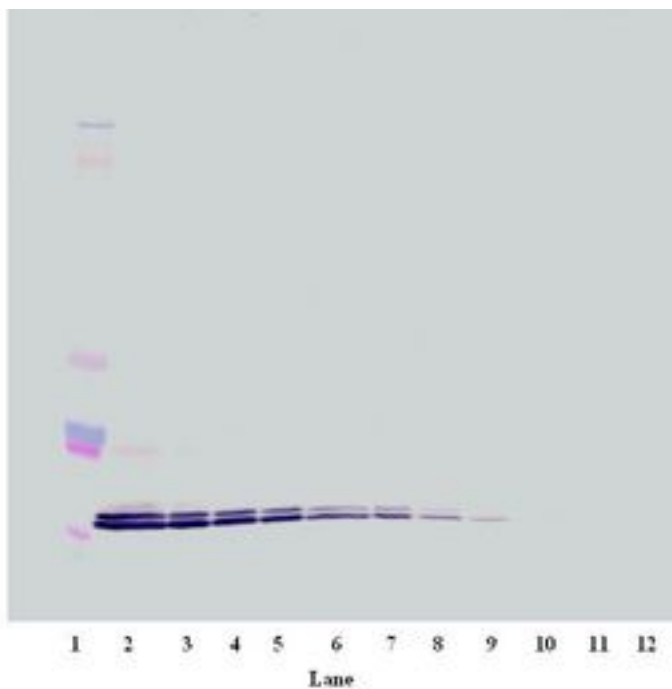
CXCL16 Rabbit anti-Human Polyclonal Antibody - LS-B8223 - LSBio	
<b>CatalogID:</b>	LS-B8223
<b>Validation:</b>	This antibody replaces catalog number LS-C104687. It has been validated for use in the following assays: IHC-P.
<b>Target:</b>	chemokine (C-X-C motif) ligand 16 (CXCL16)
<b>Synonyms:</b>	CXCL16 Antibody, C-X-C motif chemokine 16 Antibody, SCYB16 Antibody, Transmembrane chemokine CXCL16 Antibody, CXC chemokine ligand 16 Antibody, CXCLG16 Antibody, Small-inducible cytokine B16 Antibody, SR-PSOX Antibody, SRPSOX Antibody
<b>Family / Subfamily:</b>	Interchrine / Interchrine alpha
<b>Host</b>	CXCL16 antibody was produced in Rabbit
<b>Clonality:</b>	Polyclonal
<b>Immunogen Species:</b>	CXCL16 antibody was raised against Human
<b>Antigen Type:</b>	Cell extract
<b>Immunogen:</b>	CXCL16 antibody was raised against e.coli derived recombinant Human CXCL-16.
<b>Specificity:</b>	Human CXCL16
<b>Reactivity:</b>	Human
<b>Purification:</b>	Immunoaffinity purified
<b>Reconstitution:</b>	Sterile water. Possible additional volumes for resuspension: 50 µl
<b>Presentation:</b>	Lyophilized from PBS, pH 7.2
<b>Recommended Storage:</b>	Store Lyophilized at room temperature up to 1 month; Reconstituted for up to two weeks at 2-8°C. Aliquot and freeze at -20°C for long term storage. Avoid freeze/thaw cycles.
<b>Usage Summary:</b>	Immunohistochemistry: LS-B8223 in an IHC-plus antibody, validated by our pathologists for use in IHC against formalin-fixed, paraffin-embedded human tissues (IHC validation procedure). A concentration of 10 ug/ml is recommended. ELISA: To detect hCXCL16 by sandwich ELISA (using 100 ul/well antibody solution) a concentration of 0.5-2 ug/ml of this antibody is required. This antigen affinity purified antibody, in conjunction with Biotinylated Anti-Human CXCL16 (LS-C104827) as a detection antibody, allows the detection of at least 0.2-0.4 ng/well of recombinant hCXCL16. Western Blot: To detect hCXCL16 by Western Blot analysis this antibody can be used at a concentration of 0.1-0.2 ug/ml. Used in conjunction with compatible secondary reagents the detection limit for recombinant hCXCL16 is 1.5-3 ng/lane, under either reducing or non-reducing conditions.
<b>Uses:</b>	IHC - Paraffin (10 µg/ml), Western blot (0.1 - 0.2 µg/ml), ELISA (Optimal dilution to be determined by the researcher)
<b>Size:</b>	50 µg

**Immunohistochemistry Image:**



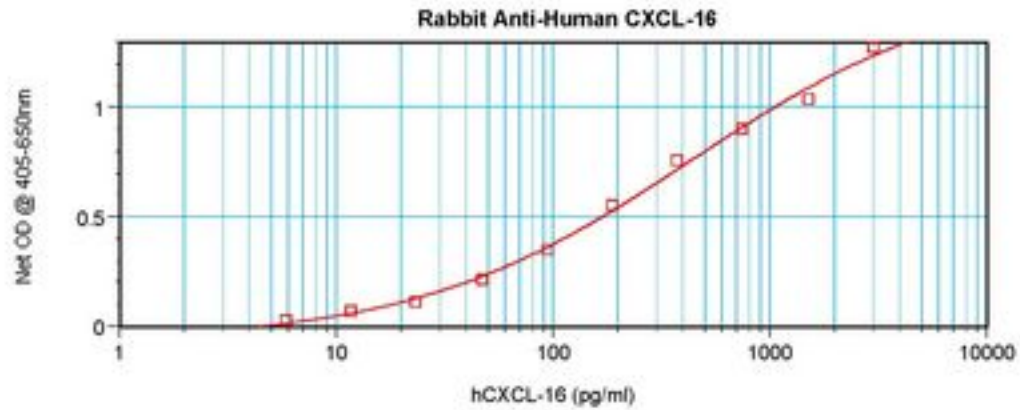
Anti-CXCL16 antibody IHC of human spleen, red pulp. Immunohistochemistry of formalin-fixed, paraffin-embedded tissue after heat-induced antigen retrieval. Antibody LS-B8223 dilution 10 ug/ml.

**Western Blot Image:**



Western Blot (non-reducing) of CXCL16 antibody LS-B8223

**ELISA Image:**



Sandwich ELISA of CXCL16 antibody LS-B8223

**Requested From:**

Japan

Laboratory Reagent For In Vitro Research Use Only

Not for resale without prior written consent from LifeSpan BioSciences, Inc.

Created on 9/24/2014

© 2014 LifeSpan BioSciences