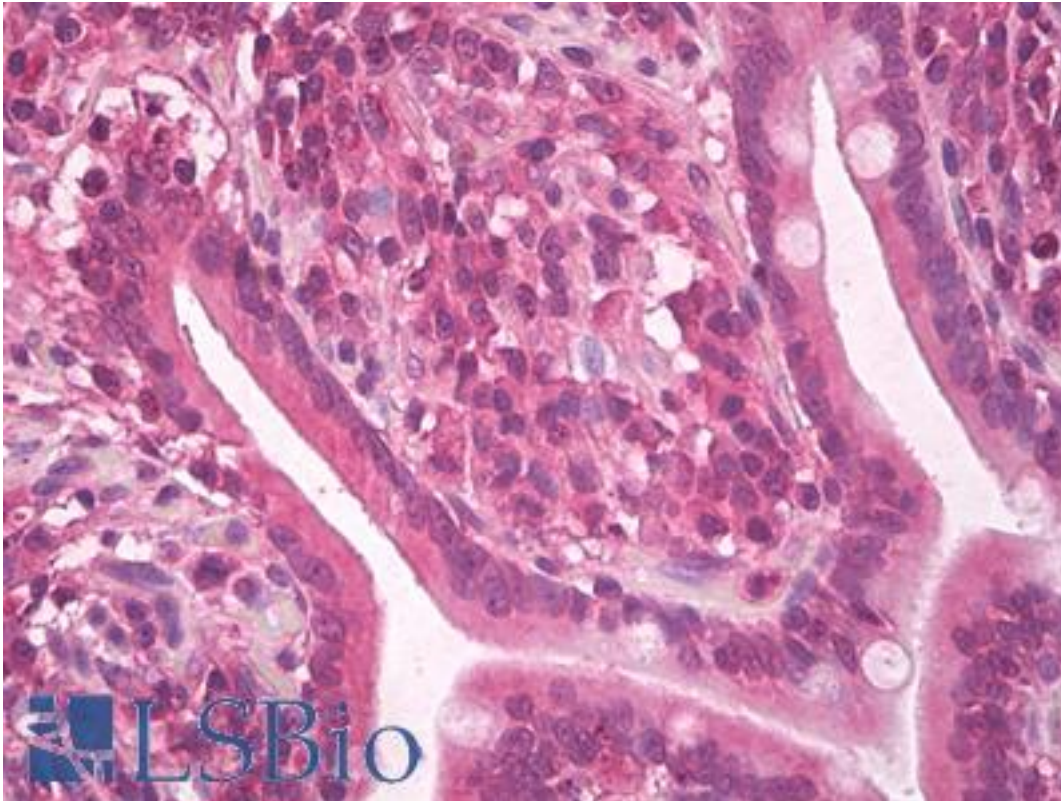


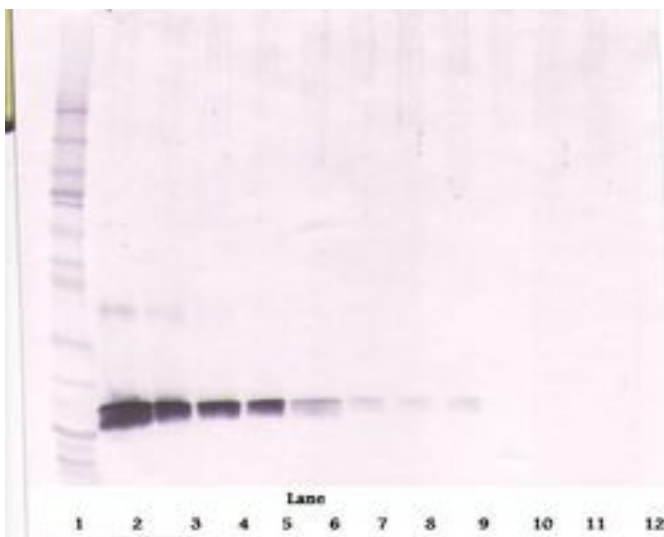
KITLG / SCF Goat anti-Human Polyclonal Antibody - LS-B8209 - LSBio	
CatalogID:	LS-B8209
Validation:	This antibody replaces catalog number LS-C104272. It has been validated for use in the following assays: IHC-P.
Target:	KIT ligand (KITLG)
Synonyms:	KITLG Antibody, C-Kit ligand Antibody, KIT ligand Antibody, Kitl Antibody, KL-1 Antibody, SHEP7 Antibody, SF Antibody, Steel factor Antibody, Stem cell factor Antibody, SCF Antibody, FPH2 Antibody, Mast cell growth factor Antibody, MGF Antibody
Host	KITLG antibody was produced in Goat
Clonality:	Polyclonal
Immunogen Species:	KITLG / SCF antibody was raised against Human
Antigen Type:	Cell extract
Immunogen:	KITLG / SCF antibody was raised against e.coli derived recombinant Human SCF.
Specificity:	Human SCF
Reactivity:	Human
Purification:	Immunoaffinity purified
Reconstitution:	Sterile water. Possible additional volumes for resuspension: 50 µl
Presentation:	Lyophilized from PBS, pH 7.2
Recommended Storage:	Store Lyophilized at room temperature up to 1 month; Reconstituted for up to two weeks at 2-8°C. Aliquot and freeze at -20°C for long term storage. Avoid freeze/thaw cycles.
Usage Summary:	<p>Immunohistochemistry: LS-B8209 in an IHC-plus antibody, validated by our pathologists for use in IHC against formalin-fixed, paraffin-embedded human tissues (IHC validation procedure). A concentration of 5 µg/ml is recommended.</p> <p>Neutralization: To yield one-half maximal inhibition [ND] of the biological activity of hSCF (100 ng/ml), a concentration of 008-012 µg/ml of this antibody is required.</p> <p>ELISA: To detect hSCF by sandwich ELISA (using 100 µl/well antibody solution) a concentration of 0.5-2 µg/ml of this antibody is required. This antigen affinity purified antibody, in conjunction with Biotinylated Anti-Human SCF (LS-C104803) as a detection antibody, allows the detection of at least 0.2-0.4 ng/well of recombinant hSCF. Western Blot: To detect hSCF by Western Blot analysis this antibody can be used at a concentration of 0.1-0.2 µg/ml. Used in conjunction with compatible secondary reagents the detection limit for recombinant hSCF is 1.5-3 ng/lane, under either reducing or non-reducing conditions.</p>
Uses:	IHC - Paraffin (5 µg/ml), Western blot (0.1 - 0.2 µg/ml), ELISA (0.5 - 2 µg/ml), Neutralization (0.01 - 0.01 µg/ml) (Optimal dilution to be determined by the researcher)
Size:	50 µg

Immunohistochemistry Image:



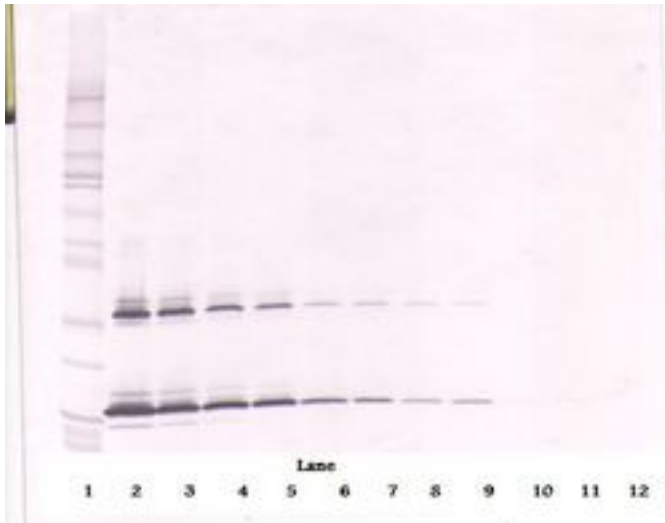
Anti-SCF antibody IHC of human small intestine. Immunohistochemistry of formalin-fixed, paraffin-embedded tissue after heat-induced antigen retrieval. Antibody LS-B8209 dilution 5 ug/ml.

Western Blot Image:



Western Blot (reducing) of SCF antibody LS-B8209

Western Blot Image:



Western Blot (non-reducing) of SCF antibody LS-B8209

ELISA Image:



Sandwich ELISA of SCF antibody LS-B8209

Requested From:

Japan

Laboratory Reagent For In Vitro Research Use Only

Not for resale without prior written consent from LifeSpan BioSciences, Inc.

Created on 9/24/2014

© 2014 LifeSpan BioSciences