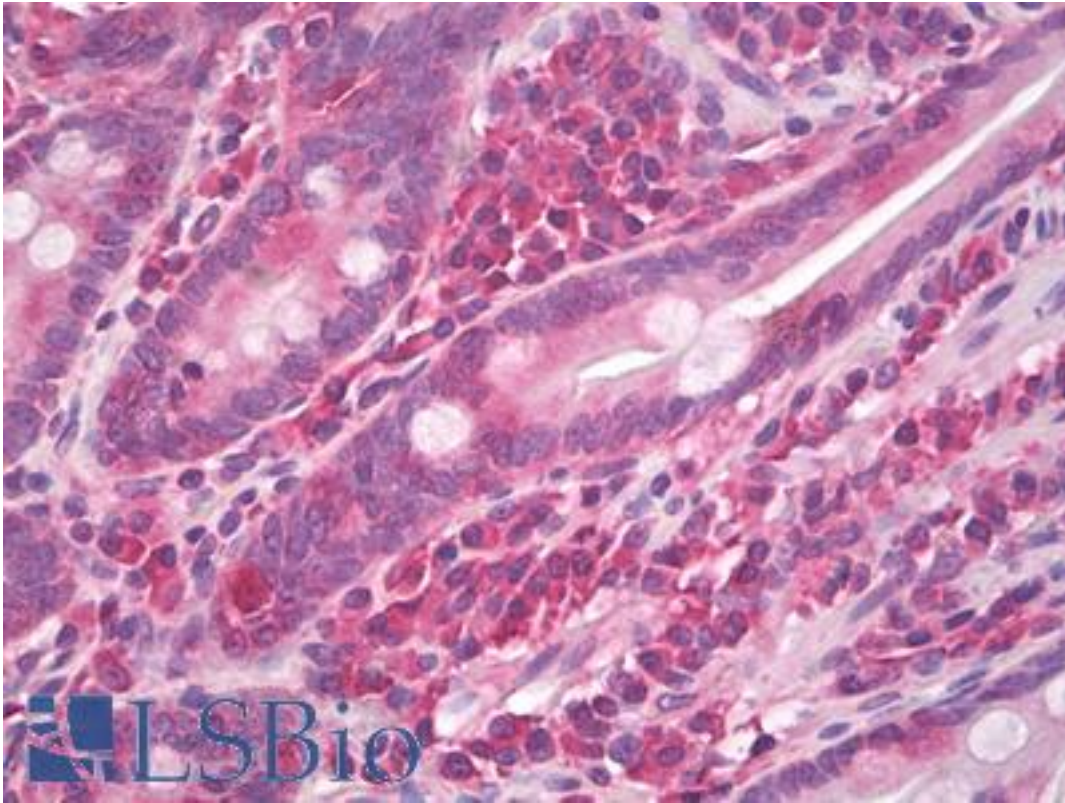


### CNTF Rabbit anti-Human Polyclonal Antibody - LS-B8208 - LSBio

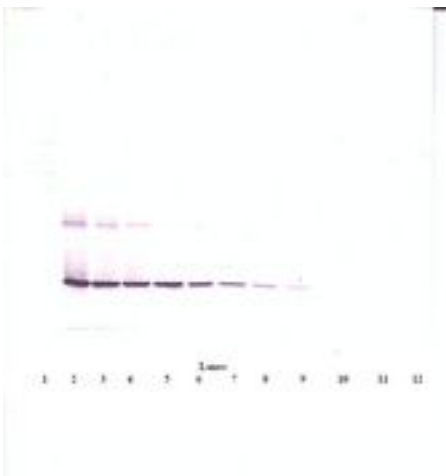
<b>CatalogID:</b>	LS-B8208
<b>Validation:</b>	This antibody replaces catalog number LS-C104310. It has been validated for use in the following assays: IHC-P.
<b>Target:</b>	ciliary neurotrophic factor (CNTF)
<b>Synonyms:</b>	CNTF Antibody, Ciliary neurotrophic factor Antibody, hCNTF Antibody
<b>Host</b>	CNTF antibody was produced in Rabbit
<b>Clonality:</b>	Polyclonal
<b>Immunogen Species:</b>	CNTF antibody was raised against Human
<b>Antigen Type:</b>	Cell extract
<b>Immunogen:</b>	CNTF antibody was raised against e.coli derived recombinant Human CNTF.
<b>Specificity:</b>	Human CNTF
<b>Reactivity:</b>	Human
<b>Purification:</b>	Immunoaffinity purified
<b>Reconstitution:</b>	Sterile water. Possible additional volumes for resuspension: 50 µl
<b>Presentation:</b>	Lyophilized from PBS, pH 7.2
<b>Recommended Storage:</b>	Store Lyophilized at room temperature up to 1 month; Reconstituted for up to two weeks at 2-8°C. Aliquot and freeze at -20°C for long term storage. Avoid freeze/thaw cycles.
<b>Usage Summary:</b>	Immunohistochemistry: LS-B8208 is an IHC-plus antibody, validated by our pathologists for use in IHC against formalin-fixed, paraffin-embedded human tissues (IHC validation procedure). A concentration of 5 µg/ml is recommended. Neutralization: To yield one-half maximal inhibition [ND] of the biological activity of Human CNTF (1 µg/ml) a concentration of 7-11 µg/ml of this antibody is required. ELISA: To detect hCNTF by sandwich ELISA (using 100 µl/well antibody solution) a concentration of 0.5-2 µg/ml of this antibody is required. This antigen affinity purified antibody, in conjunction with Biotinylated Anti-Human CNTF (LS-C104338) as a detection antibody, allows the detection of at least 0.2-0.4 ng/well of recombinant hCNTF. Western Blot: To detect hCNTF by Western Blot analysis this antibody can be used at a concentration of 0.1-0.2 µg/ml. Used in conjunction with compatible secondary reagents the detection limit for recombinant hCNTF is 1.5-3 ng/lane, under either reducing or non-reducing conditions.
<b>Uses:</b>	IHC - Paraffin (5 µg/ml), Western blot (0.1 - 0.2 µg/ml), ELISA (0.5 - 2 µg/ml) (Optimal dilution to be determined by the researcher)
<b>Size:</b>	50 µg

**Immunohistochemistry Image:**



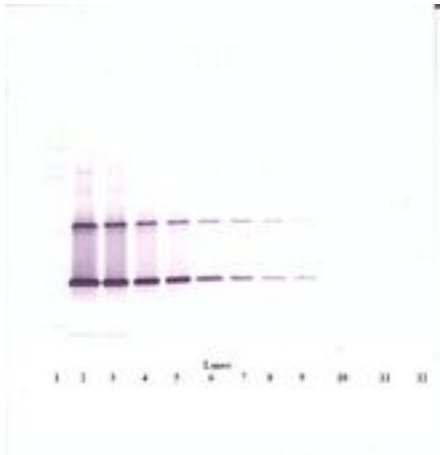
Anti-CNTF antibody IHC of human small intestine. Immunohistochemistry of formalin-fixed, paraffin-embedded tissue after heat-induced antigen retrieval. Antibody LS-B8208 dilution 5 ug/ml.

**Western Blot Image:**



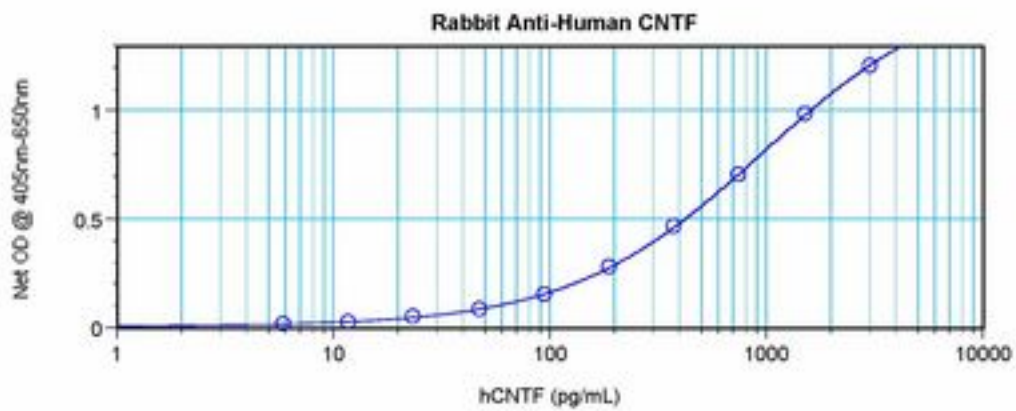
Western Blot (reducing) of CNTF antibody LS-B8208

**Western Blot Image:**



Western Blot (non-reducing) of CNTF antibody LS-B8208

**ELISA Image:**



Sandwich ELISA of CNTF antibody LS-B8208

**Requested From:**

Japan

Laboratory Reagent For In Vitro Research Use Only

Not for resale without prior written consent from LifeSpan BioSciences, Inc.

Created on 9/24/2014

© 2014 LifeSpan BioSciences