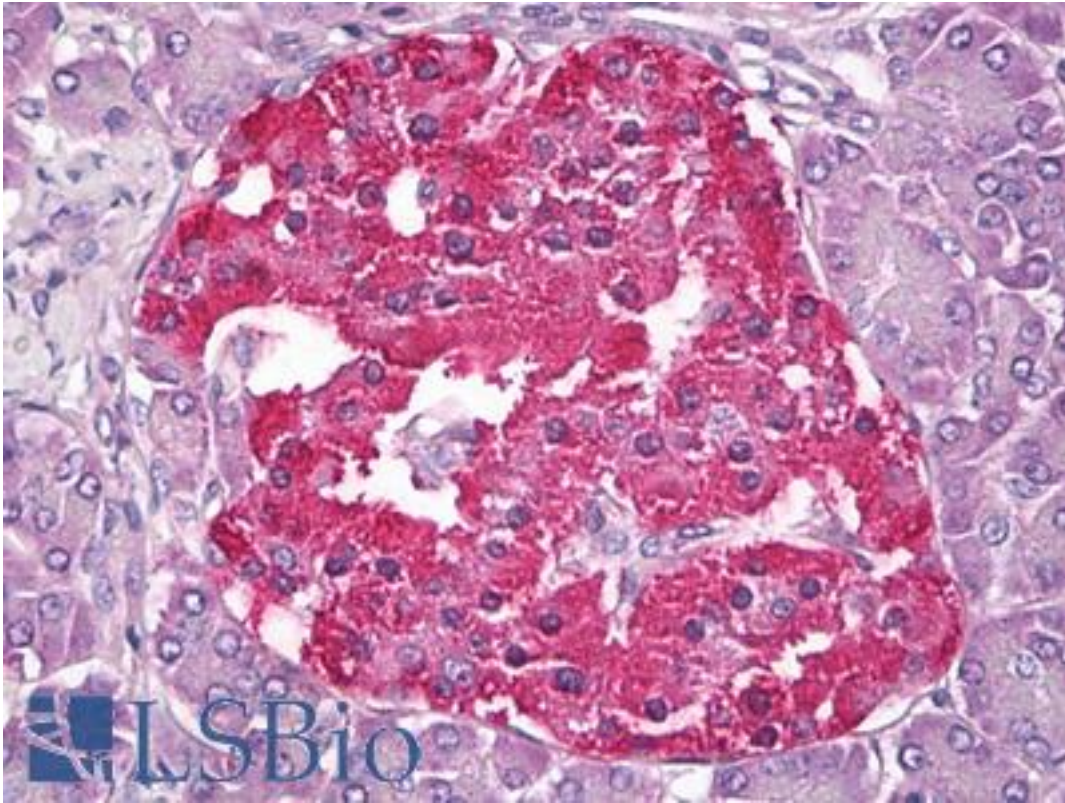


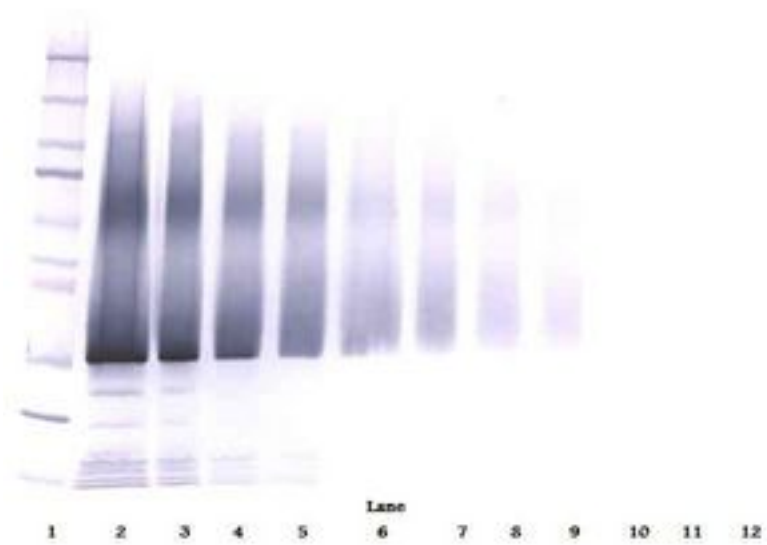
IGFBP5 / IGFBP-5 Rabbit anti-Human Polyclonal Antibody - LS-B8207 - LSBio	
CatalogID:	LS-B8207
Validation:	This antibody replaces catalog number LS-C104306. It has been validated for use in the following assays: IHC-P.
Target:	insulin-like growth factor binding protein 5 (IGFBP5)
Synonyms:	IGFBP5 Antibody, IBP-5 Antibody, IGFBP-5 Antibody, IBP5 Antibody, IGF-binding protein 5 Antibody
Host	IGFBP5 antibody was produced in Rabbit
Clonality:	Polyclonal
Immunogen Species:	IGFBP5 / IGFBP-5 antibody was raised against Human
Antigen Type:	Cell extract
Immunogen:	IGFBP5 / IGFBP-5 antibody was raised against e.coli derived recombinant Human IGF-BP5.
Specificity:	Human IGF-BP5
Reactivity:	Human
Purification:	Immunoaffinity purified
Reconstitution:	Sterile water. Possible additional volumes for resuspension: 50 µl
Presentation:	Lyophilized from PBS, pH 7.2
Recommended Storage:	Store Lyophilized at room temperature up to 1 month; Reconstituted for up to two weeks at 2-8°C. Aliquot and freeze at -20°C for long term storage. Avoid freeze/thaw cycles.
Usage Summary:	Immunohistochemistry: LS-B8207 in an IHC-plus antibody, validated by our pathologists for use in IHC against formalin-fixed, paraffin-embedded human tissues (IHC validation procedure). A concentration of 5 µg/ml is recommended. ELISA: To detect hIGF-BP5 by sandwich ELISA (using 100 µl/well antibody solution) a concentration of 0.5-2 µg/ml of this antibody is required. This antigen affinity purified antibody, in conjunction with Biotinylated Anti-Human IGF-BP5 (LS-C104305) as a detection antibody, allows the detection of at least 0.2-0.4 ng/well of recombinant hIGF-BP5. Western Blot: To detect hIGF-BP5 by Western Blot analysis this antibody can be used at a concentration of 0.1-0.2 µg/ml. Used in conjunction with compatible secondary reagents the detection limit for recombinant hIGF-BP5 is 1.5-3 ng/lane, under either reducing or non-reducing conditions.
Uses:	IHC - Paraffin (5 µg/ml), Western blot (0.1 - 0.2 µg/ml), ELISA (0.5 - 2 µg/ml) (Optimal dilution to be determined by the researcher)
Size:	50 µg

Immunohistochemistry Image:



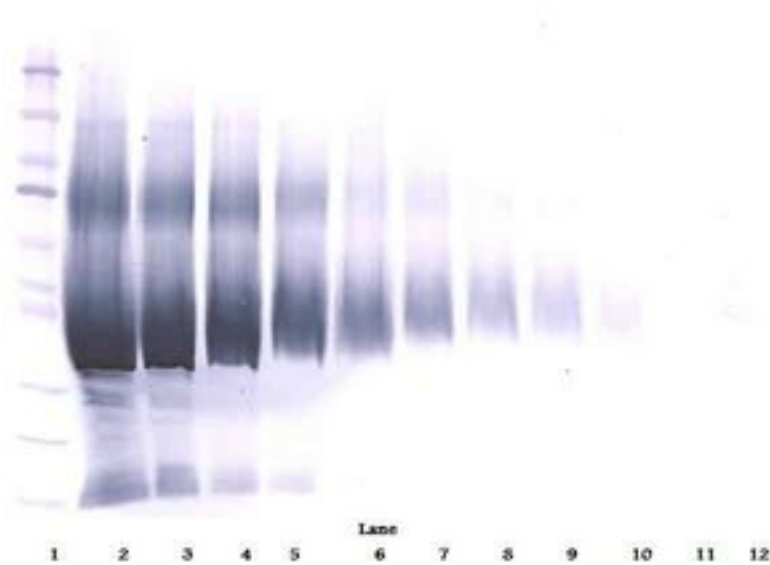
Anti-IGFBP-5 antibody IHC of human pancreas, islets of Langerhans. Immunohistochemistry of formalin-fixed, paraffin-embedded tissue after heat-induced antigen retrieval. Antibody LS-B8207 dilution 5 ug/ml.

Western Blot Image:



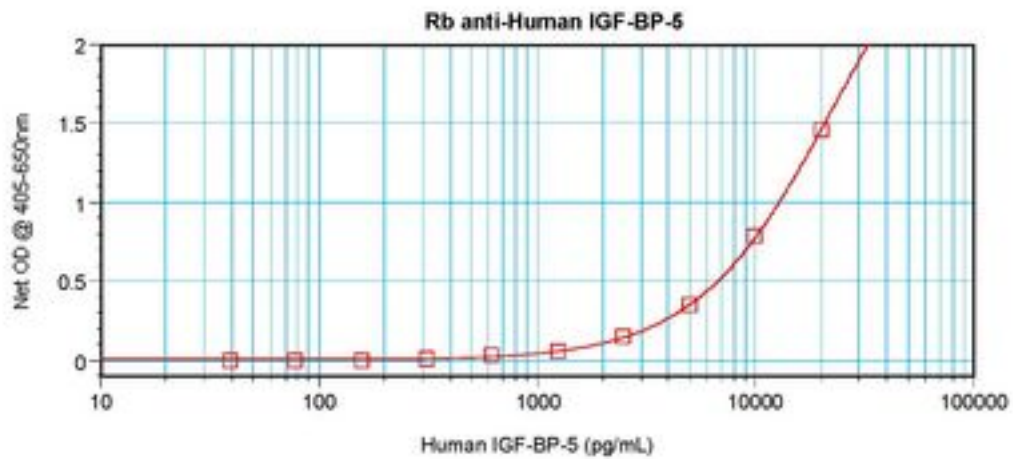
Western Blot (non-reducing) of IGFBP-5 antibody LS-B8207

Western Blot Image:



Western Blot (reducing) of IGFBP-5 antibody LS-B8207

ELISA Image:



Sandwich ELISA of IGFBP-5 antibody LS-B8207

Requested From:

Japan

Laboratory Reagent For In Vitro Research Use Only

Not for resale without prior written consent from LifeSpan BioSciences, Inc.

Created on 9/24/2014

© 2014 LifeSpan BioSciences