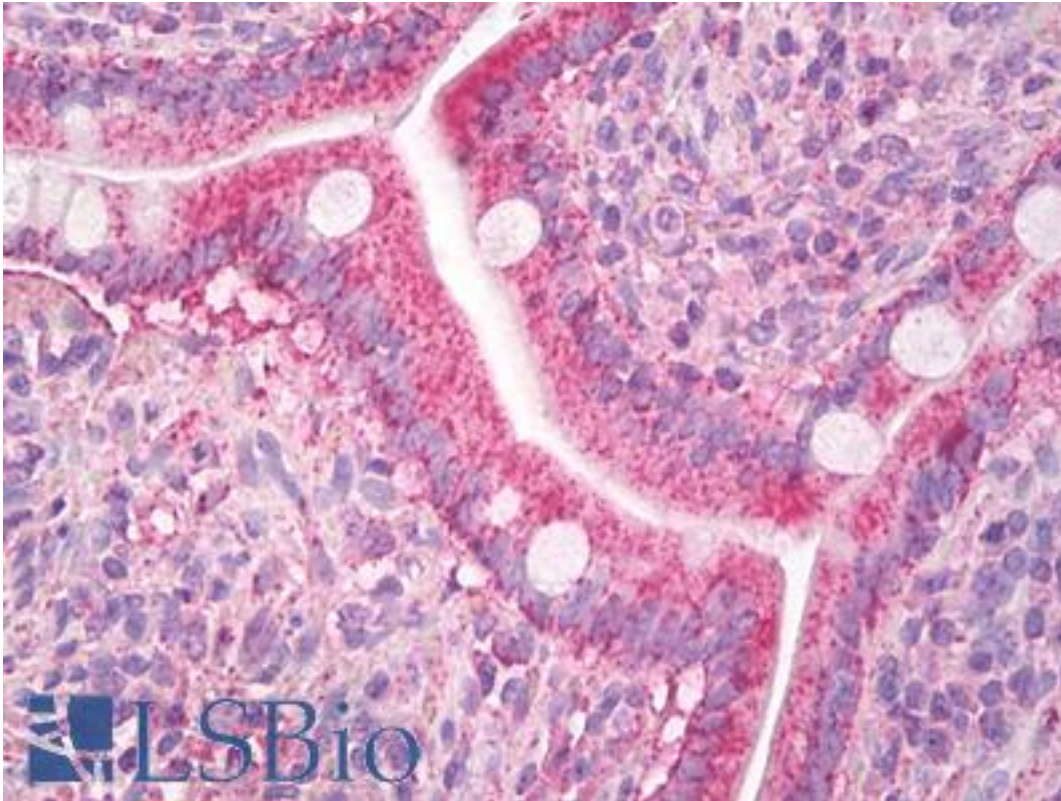


CCL8 / MCP-2 Mouse anti-Human Monoclonal Antibody - LS-B8198 - LSBio	
<b>CatalogID:</b>	LS-B8198
<b>Validation:</b>	This antibody replaces catalog number LS-C104535. It has been validated for use in the following assays: IHC-P.
<b>Target:</b>	chemokine (C-C motif) ligand 8 (CCL8)
<b>Synonyms:</b>	CCL8 Antibody, C-C motif chemokine 8 Antibody, HC14 Antibody, MCP2 Antibody, Monocyte chemotactic protein 2 Antibody, Scya10 Antibody, SCYA8 Antibody, Small-inducible cytokine A8 Antibody, MCP-2 Antibody, Chemokine (C-C motif) ligand 8 Antibody
<b>Family / Subfamily:</b>	Intercrine / Intercrine beta
<b>Host</b>	CCL8 antibody was produced in Mouse
<b>Clonality:</b>	Monoclonal
<b>Isotype:</b>	IgG1,k
<b>Immunogen Species:</b>	CCL8 / MCP-2 antibody was raised against Human
<b>Antigen Type:</b>	Recombinant protein
<b>Immunogen:</b>	CCL8 / MCP-2 antibody was raised against e.coli derived recombinant Human MCP-2 cprresponding to amino acids 24-99 of P80075.
<b>Specificity:</b>	Human MCP-2
<b>Reactivity:</b>	Human
<b>Purification:</b>	Protein A purified
<b>Reconstitution:</b>	Sterile water. Possible additional volumes for resuspension: 500 µl
<b>Presentation:</b>	Lyophilized from PBS
<b>Recommended Storage:</b>	Store Lyophilized at room temperature up to 1 month; Reconstituted for up to two weeks at 2-8°C. Aliquot and freeze at -20°C for long term storage. Avoid freeze/thaw cycles.
<b>Usage Summary:</b>	Immunohistochemistry: LS-B8198 in an IHC-plus antibody, validated by our pathologists for use in IHC against formalin-fixed, paraffin-embedded human tissues (IHC validation procedure). A concentration of 10 ug/ml is recommended. ELISA: In a sandwich ELISA (assuming 100 ul/well), a concentration of 1-2 ug/ml of this antibody will detect at least 100 pg/ml of recombinant human MCP-2 when used with biotinylated antigen affinity purified anti-human MCP-2 (LS-C104731) as the detection antibody at a concentration of approximately 0.5-1 ug/ml. Western Blot: To detect hMCP-2 by Western Blot analysis this antibody can be used at a concentration of 0.25-0.50 ug/ml. Used in conjunction with compatible secondary reagents the detection limit for recombinant hMCP-2 is 0.25-0.50 ng/lane, under non-reducing conditions.
<b>Uses:</b>	IHC - Paraffin (10 µg/ml), Western blot (0.25 - 0.5 µg/ml), ELISA (1 - 2 µg/ml) (Optimal dilution to be determined by the researcher)
<b>Size:</b>	500 µg

**Immunohistochemistry Image:**



Anti-MCP-2 / CCL8 antibody IHC of human small intestine. Immunohistochemistry of formalin-fixed, paraffin-embedded tissue after heat-induced antigen retrieval. Antibody LS-B8198 dilution 10 ug/ml.

**Requested From:**

Japan

Laboratory Reagent For In Vitro Research Use Only

Not for resale without prior written consent from LifeSpan BioSciences, Inc.

Created on 9/24/2014

© 2014 LifeSpan BioSciences