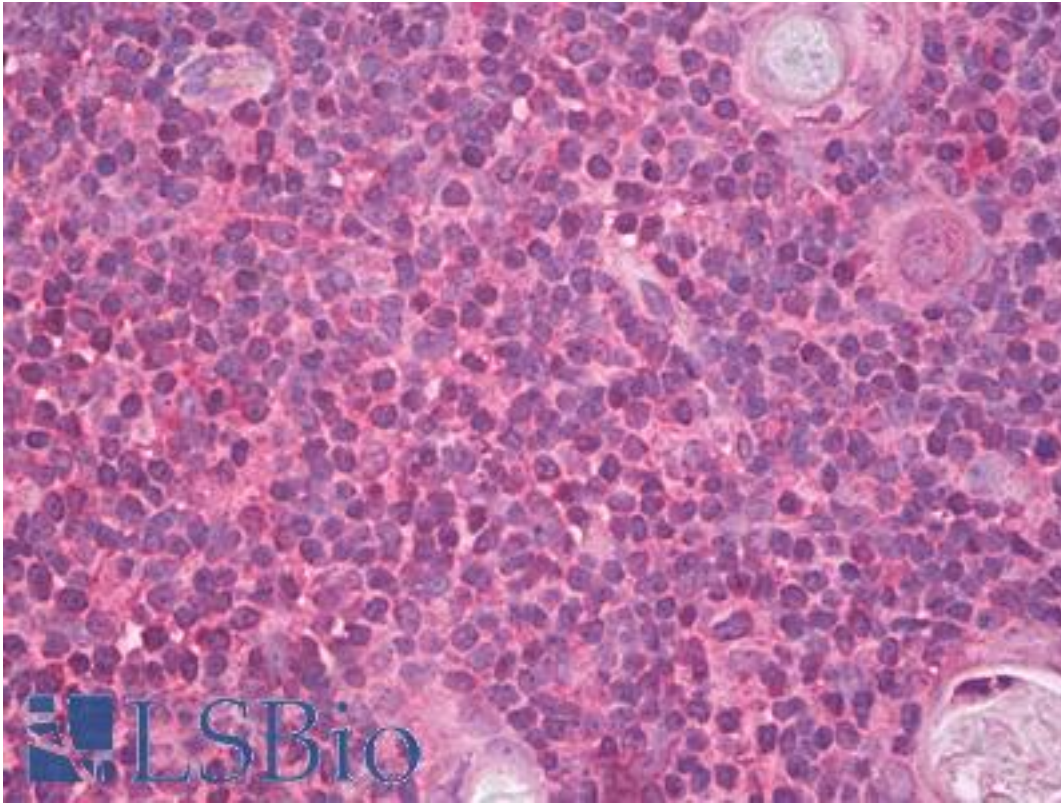


CCL19 / MIP3-Beta Mouse anti-Human Monoclonal Antibody - LS-B8194 - LSBio	
<b>CatalogID:</b>	LS-B8194
<b>Validation:</b>	This antibody replaces catalog number LS-C104347. It has been validated for use in the following assays: IHC-P.
<b>Target:</b>	chemokine (C-C motif) ligand 19 (CCL19)
<b>Synonyms:</b>	CCL19 Antibody, C-C motif chemokine 19 Antibody, CKb11 Antibody, CC chemokine ligand 19 Antibody, EBI1 ligand chemokine Antibody, EBI1-ligand chemokine Antibody, Exodus-3 Antibody, ELC Antibody, MIP-3-beta Antibody, MIP3B Antibody, SCYA19 Antibody, Small-inducible cytokine A19 Antibody, Beta chemokine exodus-3 Antibody, Beta-chemokine exodus-3 Antibody, CK beta-11 Antibody, MIP-3b Antibody
<b>Family / Subfamily:</b>	Intercrine / Intercrine beta
<b>Host</b>	CCL19 antibody was produced in Mouse
<b>Clonality:</b>	Monoclonal
<b>Isotype:</b>	IgG1,k
<b>Immunogen Species:</b>	CCL19 / MIP3-Beta antibody was raised against Human
<b>Antigen Type:</b>	Cell extract
<b>Immunogen:</b>	CCL19 / MIP3-Beta antibody was raised against e.coli derived recombinant Human MIP-3beta.
<b>Specificity:</b>	Human MIP-3beta
<b>Reactivity:</b>	Human
<b>Purification:</b>	Protein A purified
<b>Reconstitution:</b>	Sterile water. Possible additional volumes for resuspension: 500 µl
<b>Presentation:</b>	Lyophilized from PBS
<b>Recommended Storage:</b>	Store Lyophilized at room temperature up to 1 month; Reconstituted for up to two weeks at 2-8°C. Aliquot and freeze at -20°C for long term storage. Avoid freeze/thaw cycles.
<b>Usage Summary:</b>	Immunohistochemistry: LS-B8194 in an IHC-plus antibody, validated by our pathologists for use in IHC against formalin-fixed, paraffin-embedded human tissues (IHC validation procedure). A concentration of 10 µg/ml is recommended. ELISA: In a sandwich ELISA (assuming 100 µl/well), a concentration of 2-4 µg/ml of this antibody will detect recombinant Human MIP-3beta when used with biotinylated antigen affinity purified anti-Human MIP-3beta (LS-C104502) as the detection antibody at a concentration of approximately 0.5-1 µg/ml. Western Blot: To detect Human MIP-3beta by Western Blot analysis this antibody can be used at a concentration of 1-2 µg/ml. When used in conjunction with compatible secondary reagents the detection limit for recombinant Human MIP-3beta is 2-4 ng/lane, under reducing conditions.
<b>Uses:</b>	IHC - Paraffin (10 µg/ml), Western blot (1 - 2 µg/ml), ELISA (2 - 4 µg/ml) (Optimal dilution to be determined by the researcher)
<b>Size:</b>	500 µg
<b>Concentration:</b>	1 mg/ml (after resuspension)

**Immunohistochemistry Image:**



Anti-CCL19 antibody IHC of human thymus. Immunohistochemistry of formalin-fixed, paraffin-embedded tissue after heat-induced antigen retrieval. Antibody LS-B8194 dilution 10 ug/ml.

**Requested From:**

Japan

Laboratory Reagent For In Vitro Research Use Only

Not for resale without prior written consent from LifeSpan BioSciences, Inc.

Created on 9/24/2014

© 2014 LifeSpan BioSciences