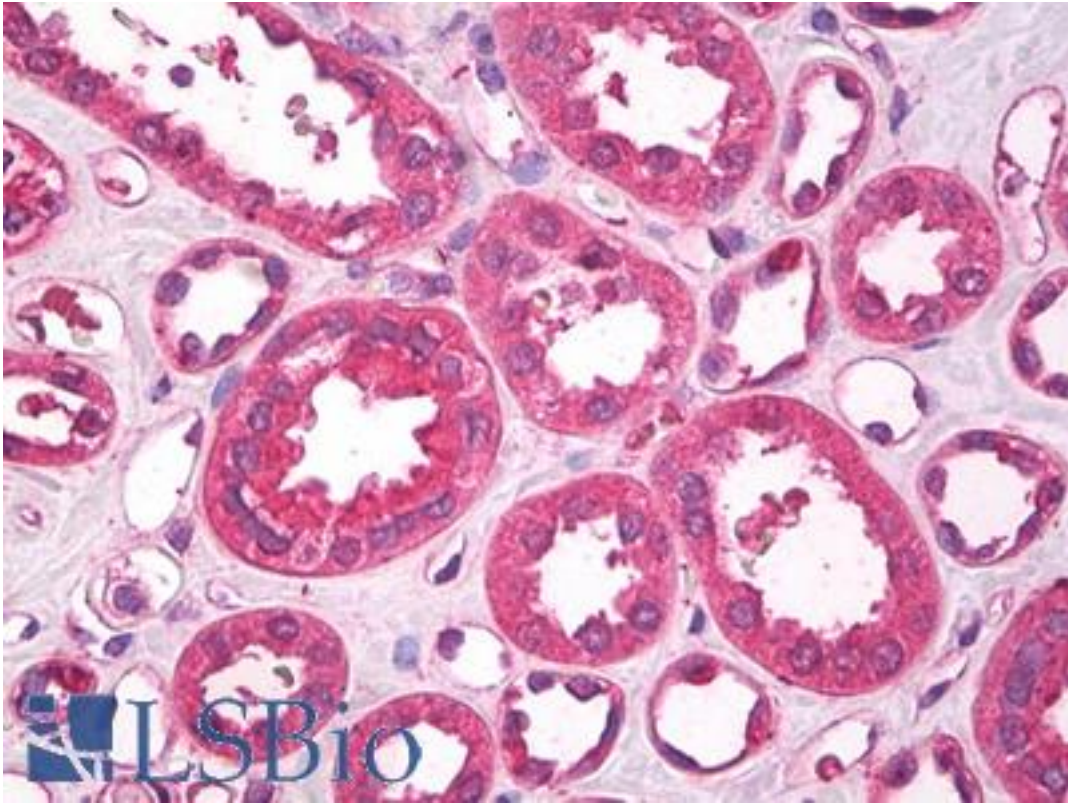


Leptin Mouse anti-Human Monoclonal Antibody - LS-B8192 - LSBio	
<b>CatalogID:</b>	LS-B8192
<b>Validation:</b>	This antibody replaces catalog number LS-C104300. It has been validated for use in the following assays: IHC-P.
<b>Target:</b>	leptin
<b>Synonyms:</b>	LEP Antibody, Leptin Antibody, LEPD Antibody, Obese protein Antibody, Obese, mouse, homolog of Antibody, Obesity factor Antibody, OBS Antibody, OB Antibody
<b>Host</b>	LEP antibody was produced in Mouse
<b>Clonality:</b>	Monoclonal
<b>Isotype:</b>	IgG1,k
<b>Immunogen Species:</b>	Leptin antibody was raised against Human
<b>Antigen Type:</b>	Cell extract
<b>Immunogen:</b>	Leptin antibody was raised against e.coli derived recombinant Human Leptin.
<b>Specificity:</b>	Human Leptin
<b>Reactivity:</b>	Human
<b>Purification:</b>	Protein A purified
<b>Reconstitution:</b>	Sterile water. Possible additional volumes for resuspension: 500 µl
<b>Presentation:</b>	Lyophilized from PBS
<b>Recommended Storage:</b>	Store Lyophilized at room temperature up to 1 month; Reconstituted for up to two weeks at 2-8°C. Aliquot and freeze at -20°C for long term storage. Avoid freeze/thaw cycles.
<b>Usage Summary:</b>	Immunohistochemistry: LS-B8192 in an IHC-plus antibody, validated by our pathologists for use in IHC against formalin-fixed, paraffin-embedded human tissues (IHC validation procedure). A concentration of 10 µg/ml is recommended. ELISA: In a sandwich ELISA (assuming 100 µl/well), a concentration of 2-4 µg/ml of this antibody will detect recombinant human Leptin when used with biotinylated antigen affinity purified anti-human Leptin as the detection antibody at a concentration of approximately 0.5-1 µg/ml. Western Blot: To detect hLeptin by Western Blot analysis this antibody can be used at a concentration of 0.20-0.40 µg/ml. Used in conjunction with compatible secondary reagents the detection limit for recombinant hLeptin is 2-4 ng/lane, under non-reducing conditions.
<b>Uses:</b>	IHC - Paraffin (10 µg/ml), Western blot (0.2 - 0.4 µg/ml), ELISA (2 - 4 µg/ml) (Optimal dilution to be determined by the researcher)
<b>Size:</b>	500 µg
<b>Concentration:</b>	1 mg/ml (after resuspension)

**Immunohistochemistry Image:**



Human, Kidney:Formalin-Fixed Paraffin-Embedded (FFPE)

**Requested From:**

Japan

Laboratory Reagent For In Vitro Research Use Only

Not for resale without prior written consent from LifeSpan BioSciences, Inc.

Created on 9/24/2014

© 2014 LifeSpan BioSciences