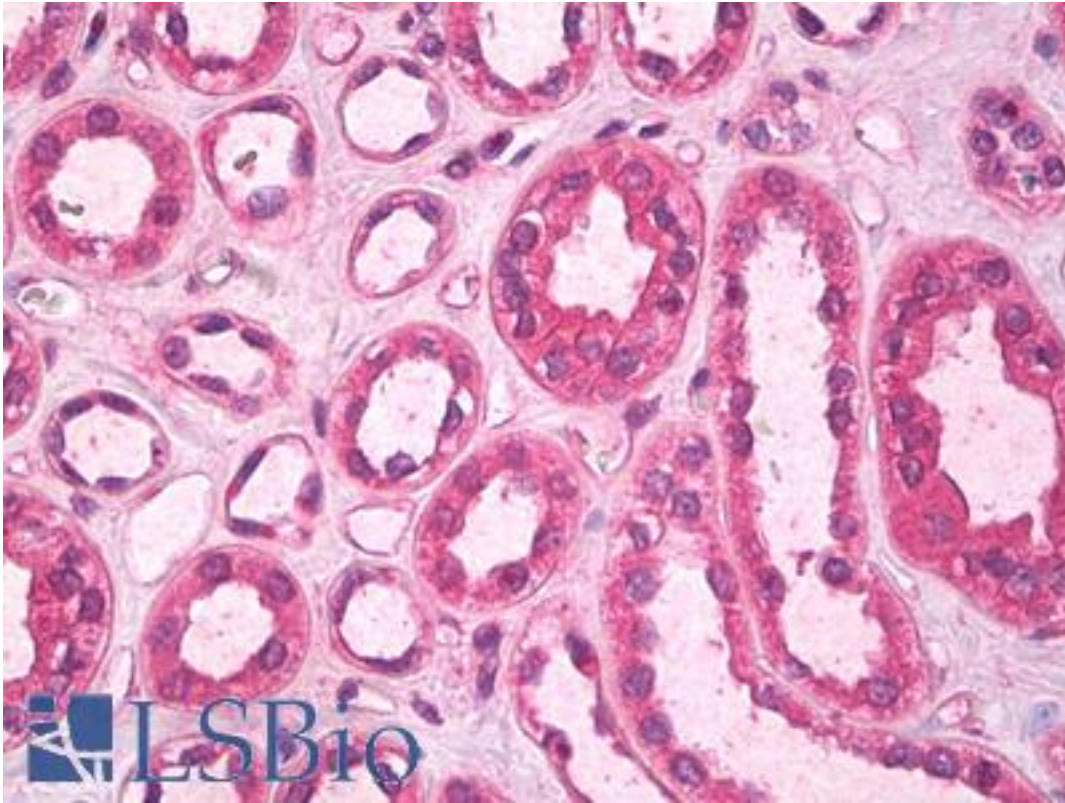


SCGF Goat anti-Human Polyclonal Antibody - LS-B8171 - LSBio

CatalogID:	LS-B8171
Validation:	This antibody replaces catalog number LS-C104356. It has been validated for use in the following assays: IHC-P.
Target:	C-type lectin domain family 11, member A (CLEC11A)
Synonyms:	CLEC11A Antibody, CLECSF3 Antibody, LSLCL Antibody, SCGF Antibody, Stem cell growth factor Antibody, p47 Antibody
Host	CLEC11A antibody was produced in Goat
Clonality:	Polyclonal
Immunogen Species:	SCGF antibody was raised against Human
Antigen Type:	Cell extract
Immunogen:	SCGF antibody was raised against e.coli derived recombinant Human SCGF-beta.
Specificity:	Human SCGF-beta
Reactivity:	Human
Purification:	Immunoaffinity purified
Reconstitution:	Sterile water
Presentation:	Lyophilized from PBS, pH 7.2
Recommended Storage:	Store Lyophilized at room temperature up to 1 month; Reconstituted for up to two weeks at 2-8°C. Aliquot and freeze at -20°C for long term storage. Avoid freeze/thaw cycles.
Usage Summary:	Immunohistochemistry: LS-B8171 in an IHC-plus antibody, validated by our pathologists for use in IHC against formalin-fixed, paraffin-embedded human tissues (IHC validation procedure). A concentration of 5 ug/ml is recommended. ELISA: To detect Human SCGF-beta by sandwich ELISA (using 100 ul/well antibody solution) a concentration of 0.5-2 ug/ml of this antibody is required. This antigen affinity purified antibody, in conjunction with Biotinylated Anti-Human SCGF-beta (LS-C104793) as a detection antibody, allows the detection of at least 0.2-0.4 ng/well of recombinant Human SCGF-beta. Western Blot: To detect Human SCGF-beta by Western Blot analysis this antibody can be used at a concentration of 0.1-0.2 ug/ml. When used in conjunction with compatible secondary reagents, the detection limit for recombinant Human SCGF-beta is 1.5-3 ng/lane, under either reducing or non-reducing conditions.
Uses:	IHC - Paraffin (5 µg/ml), Western blot (0.1 - 0.2 µg/ml), ELISA (0.5 - 2 µg/ml) (Optimal dilution to be determined by the researcher)
Size:	50 µg

Immunohistochemistry Image:



Anti-SCGF antibody IHC of human kidney, tubules. Immunohistochemistry of formalin-fixed, paraffin-embedded tissue after heat-induced antigen retrieval. Antibody LS-B8171 dilution 5 ug/ml.

Requested From:

Japan

Laboratory Reagent For In Vitro Research Use Only

Not for resale without prior written consent from LifeSpan BioSciences, Inc.

Created on 9/24/2014

© 2014 LifeSpan BioSciences