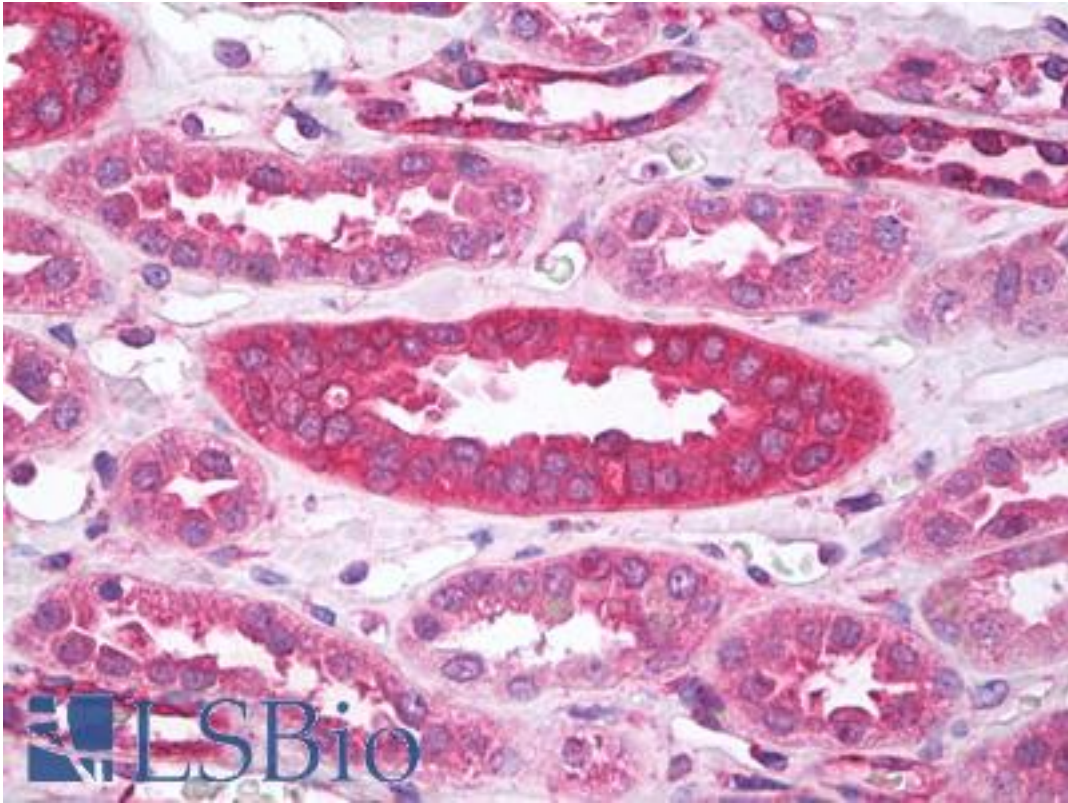


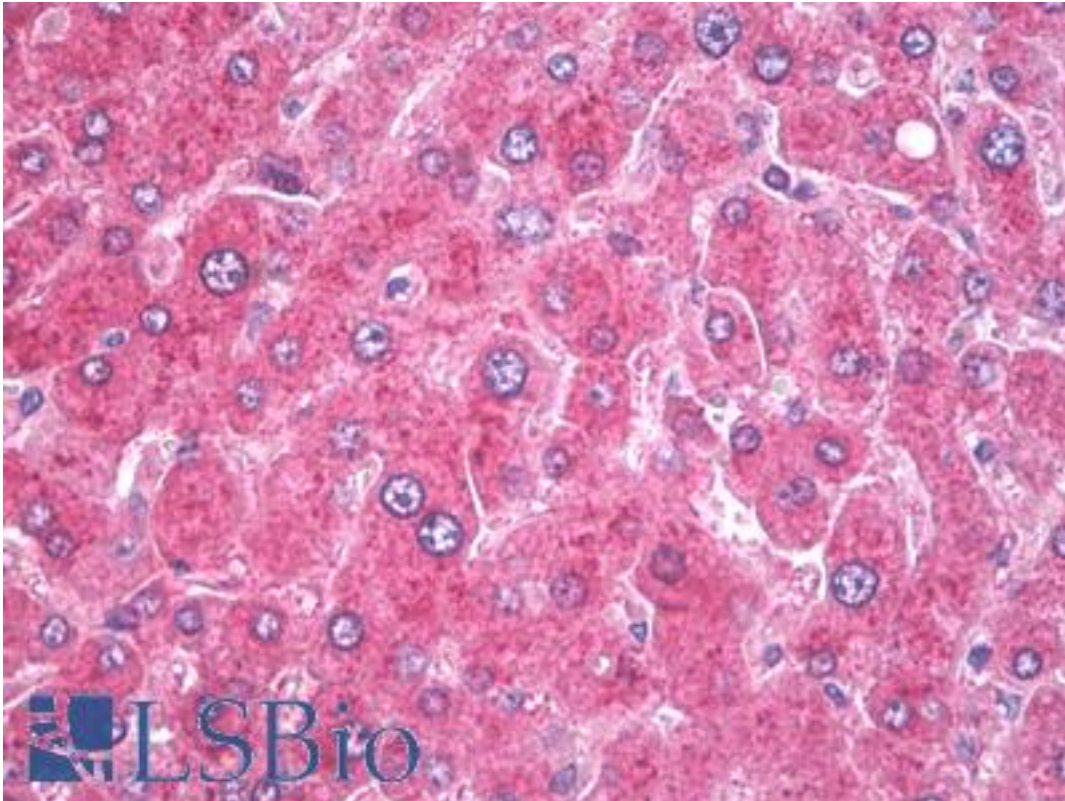
KDEL R / KDEL Receptor Mouse anti-Bovine Monoclonal (KR-10) Antibody - LS-B8142 - LSBio	
CatalogID:	LS-B8142
Validation:	This antibody replaces catalog number LS-C150378. It has been validated for use in the following assays: IHC-P.
Target:	KDEL Receptor (KDEL R)
Host	Mouse
Clonality:	Monoclonal
Isotype:	IgG1
Clone Name:	KR-10
Immunogen Species:	Bovine
Antigen Type:	Synthetic peptide - KLH conjugated
Immunogen:	A 21 residue synthetic peptide based on the bovine KDEL receptor and the peptide coupled to KLH
Specificity:	Detects an ~25kDa protein corresponding to the molecular mass of KDEL on SDS-PAGE immunoblots
Reactivity:	Bovine, Human, Monkey, Mouse, Rat, Dog, Hamster, Pig, Rabbit, Sheep, Chicken, Xenopus, Drosophila
Purification:	Protein G purified
Presentation:	PBS pH 7.2, in 50% glycerol with 0.09% azide
Recommended Storage:	Short term 4°C, long term aliquot and store at -20°C, avoid freeze thaw cycles.
Uses:	IHC - Paraffin (10 µg/ml), ICC, Western blot, Immunoprecipitation (Optimal dilution to be determined by the researcher)
Size:	25 µg
Concentration:	1 mg/ml

Immunohistochemistry Image:



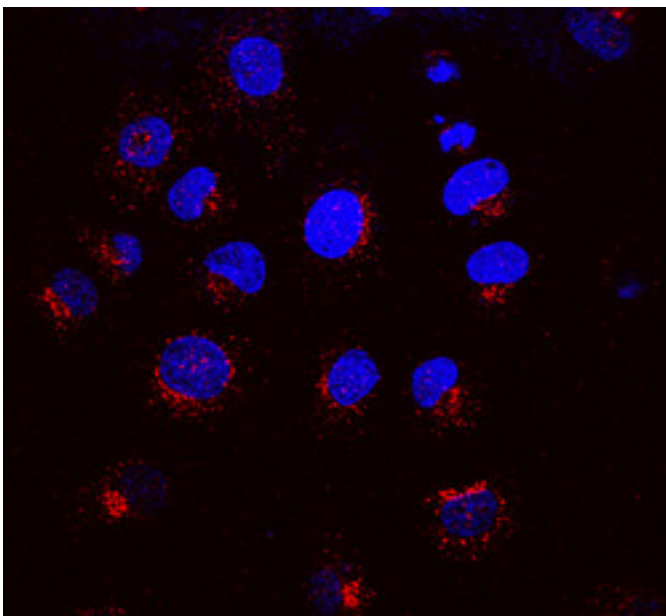
Anti-KDEL Receptor antibody IHC of human kidney. Immunohistochemistry of formalin-fixed, paraffin-embedded tissue after heat-induced antigen retrieval. Antibody LS-B8142 dilution 10 ug/ml.

Immunohistochemistry Image:



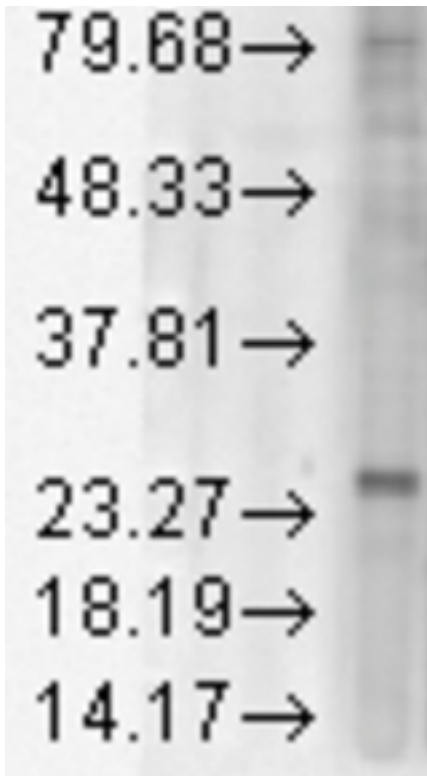
Anti-KDEL Receptor antibody IHC of human liver. Immunohistochemistry of formalin-fixed, paraffin-embedded tissue after heat-induced antigen retrieval. Antibody LS-B8142 dilution 10 ug/ml.

Immunofluorescence Image:



Merged picture of KR-10 (red) with DAPI (blue) in NRK cells.

Western Blot Image:



Western blot analysis of KDEL in rat tissue lysate, using a 1:1000 dilution of KDEL_R / KDEL Receptor antibody.

Requested From:

Japan

Laboratory Reagent For In Vitro Research Use Only

Not for resale without prior written consent from LifeSpan BioSciences, Inc.

Created on 9/24/2014

© 2014 LifeSpan BioSciences