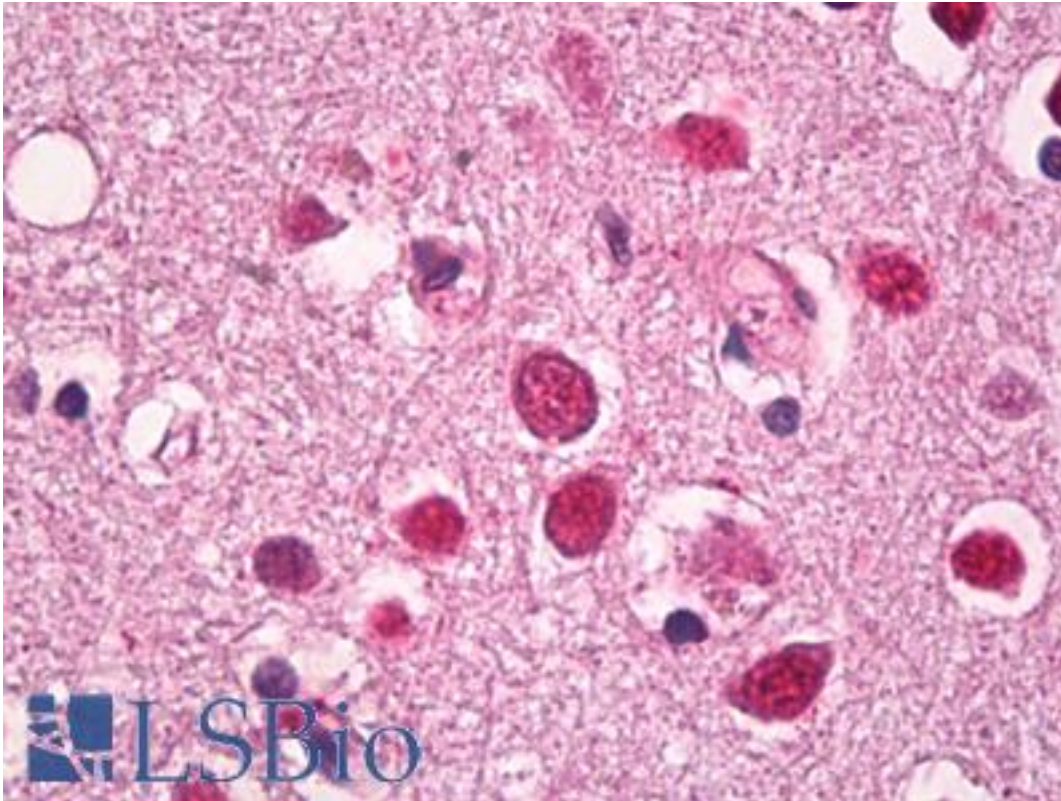


HPC2 / CBX4 Rabbit anti-Human Polyclonal Antibody - LS-B8138 - LSBio

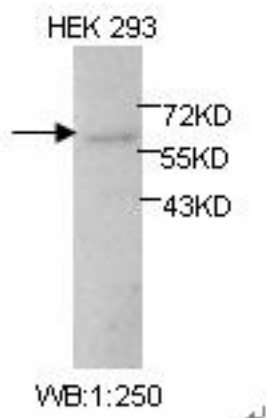
CatalogID:	LS-B8138
Validation:	This antibody replaces catalog number LS-C136813. It has been validated for use in the following assays: IHC-P.
Target:	chromobox homolog 4 (CBX4)
Synonyms:	CBX4 Antibody, Chromobox homolog 4 Antibody, Chromobox protein homolog 4 Antibody, E3 SUMO-protein ligase CBX4 Antibody, NBP16 Antibody, NS5ATP1-binding protein 16 Antibody, HPC2 Antibody, Polycomb 2 homolog Antibody, PC2 Antibody, Pc class 2 homolog Antibody
Host	CBX4 antibody was produced in Rabbit
Clonality:	Polyclonal
Isotype:	IgG
Immunogen Species:	HPC2 / CBX4 antibody was raised against Human
Antigen Type:	Synthetic peptide
Immunogen:	HPC2 / CBX4 antibody was raised against synthetic peptide
Specificity:	Not tested with other proteins.
Reactivity:	Human
Purification:	Purified
Presentation:	PBS, pH 7.4, 0.05% sodium azide
Recommended Storage:	Short term 4°C, long term aliquot and store at -20°C, avoid freeze thaw cycles.
Uses:	IHC - Paraffin (5 µg/ml), Western blot (1:250), ELISA (1:10000) (Optimal dilution to be determined by the researcher)
Size:	50 µl
Concentration:	1 mg/ml

Immunohistochemistry Image:



Anti-HPC2 / CBX4 antibody IHC of human brain, cortex neurons. Immunohistochemistry of formalin-fixed, paraffin-embedded tissue after heat-induced antigen retrieval. Antibody LS-B8138 dilution 5 ug/ml.

Western Blot Image:



Western Blot analysis of HEK 293 cell lysates with anti-CBX4 antibody

Requested From:

Japan

Laboratory Reagent For In Vitro Research Use Only

Not for resale without prior written consent from LifeSpan BioSciences, Inc.

Created on 9/24/2014

© 2014 LifeSpan BioSciences