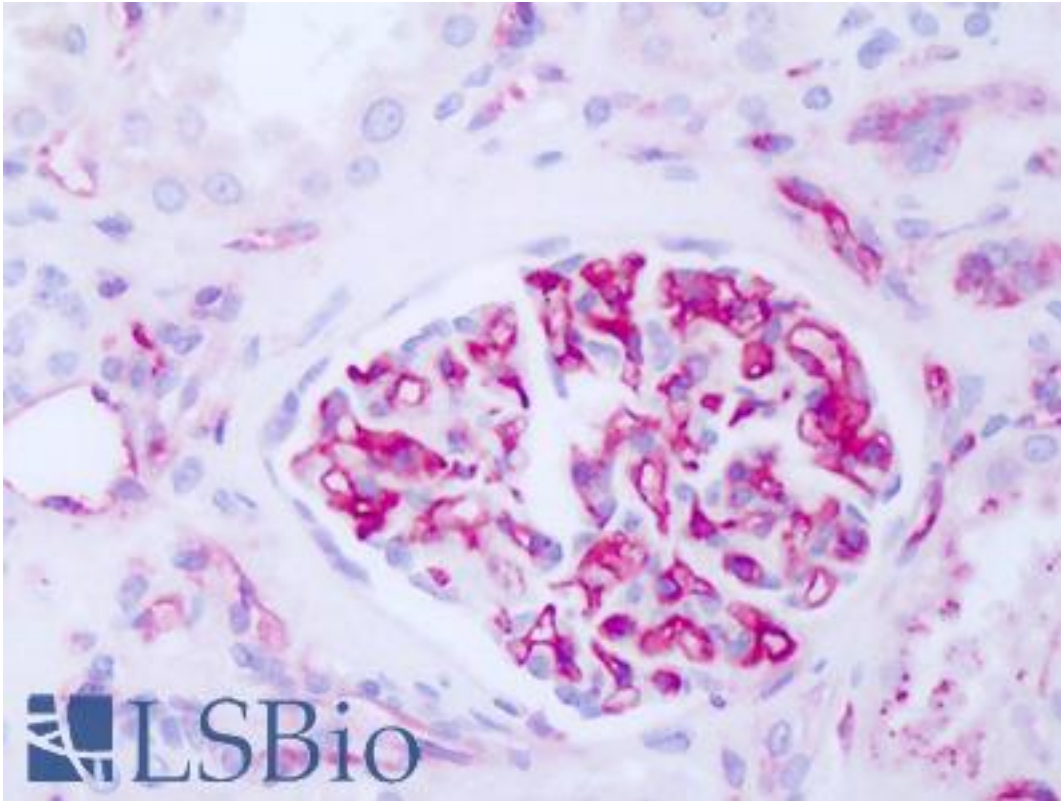


B2M / Beta 2 Microglobulin Mouse anti-Human Monoclonal (B2M-01) Antibody - LS-B8113 - LSBio	
CatalogID:	LS-B8113
Validation:	This antibody replaces catalog number LS-C153035. It has been validated for use in the following assays: IHC-P.
Target:	beta-2-microglobulin (B2M)
Synonyms:	B2M Antibody, Beta 2 Microglobulin Antibody, Beta-2-microglobulin Antibody, Beta -2-microglobin Antibody
Host	B2M antibody was produced in Mouse
Clonality:	Monoclonal
Isotype:	IgG2a
Clone Name:	B2M-01
Immunogen Species:	B2M / Beta 2 Microglobulin antibody was raised against Human
Antigen Type:	Purified protein
Immunogen:	B2M / Beta 2 Microglobulin antibody was raised against purified human beta2-microglobulin
Specificity:	reacts with beta2-microglobulin (b2M) associated with cell-surfaceMHC Class I molecules and other membrane antigens as well as with solublebeta2-microglobulin. b2M is a 12 kDa Ig like glycoprotein expressed on lymphocytes,thymocytes, monocytes, granulocytes, platelets, endothelial cells and epithelial cells. It isabsent on erythrocytes.
Reactivity:	Human, Mouse, Bovine, Dog, Rabbit, Chicken
Purification:	Purified
Presentation:	PBS containing 15 mM in sodium azide, pH 7.4
Recommended Storage:	Short term 4°C, long term aliquot and store at -20°C, avoid freeze thaw cycles.
Usage Summary:	For use in immunoprecipitation, this antibody coprecipitates b2-microglobulin (12 kDa) and HLA antigens(45 kDa) from the lysates of human lymphoid cells. Recommend U937 human histiocytic lymphoma cell line orRAJI human Burkitt lymphoma cell line as positive control and EL4 mouse lymphoblastic lymphoma cell line as negative control for Western blot. Reducing and non-reducing conditions. Resuspend approx. 50 mil. cells in 1 ml cold Lysis buffer (1%laurylmaltoside in 20 mM Tris/Cl, 100 mM NaCl pH 8.2, 50 mM NaF including Proteaseinhibitor Cocktail). Incubate 60 min on ice. Centrifuge to remove cell debris. Mix lysate withnon-reducing/reducing Laemmli SDS-PAGE sample buffer. Recommend peripheral blood lymphocytes as positive control and DAUDI human Burkitt lymphoma cell line, or erythrocytes as negative control for flow cytometry. Recommend kidney glomeruli as postive control for IHC. For RIA, use at an assay dependent concentration. The dissociation constant of the antibody soluble b2-microglobulin is 1.5 x 10-8 mol/l as determined by competitive RIA.
Uses:	IHC - Paraffin (1:50), Western blot (2 - 4 µg/ml), Immunoprecipitation, Flow Cytometry, ELISA, Radioimmunoassay (Optimal dilution to be determined by the researcher)
Size:	50 µg
Concentration:	1 mg/ml

Immunohistochemistry Image:



Anti-B2M / Beta 2 Microglobulin antibody IHC of human kidney, glomerulus.
Immunohistochemistry of formalin-fixed, paraffin-embedded tissue after heat-induced antigen retrieval. Antibody LS-B8113 dilution 1:50.

Requested From:

Japan

Laboratory Reagent For In Vitro Research Use Only

Not for resale without prior written consent from LifeSpan BioSciences, Inc.

Created on 9/24/2014

© 2014 LifeSpan BioSciences