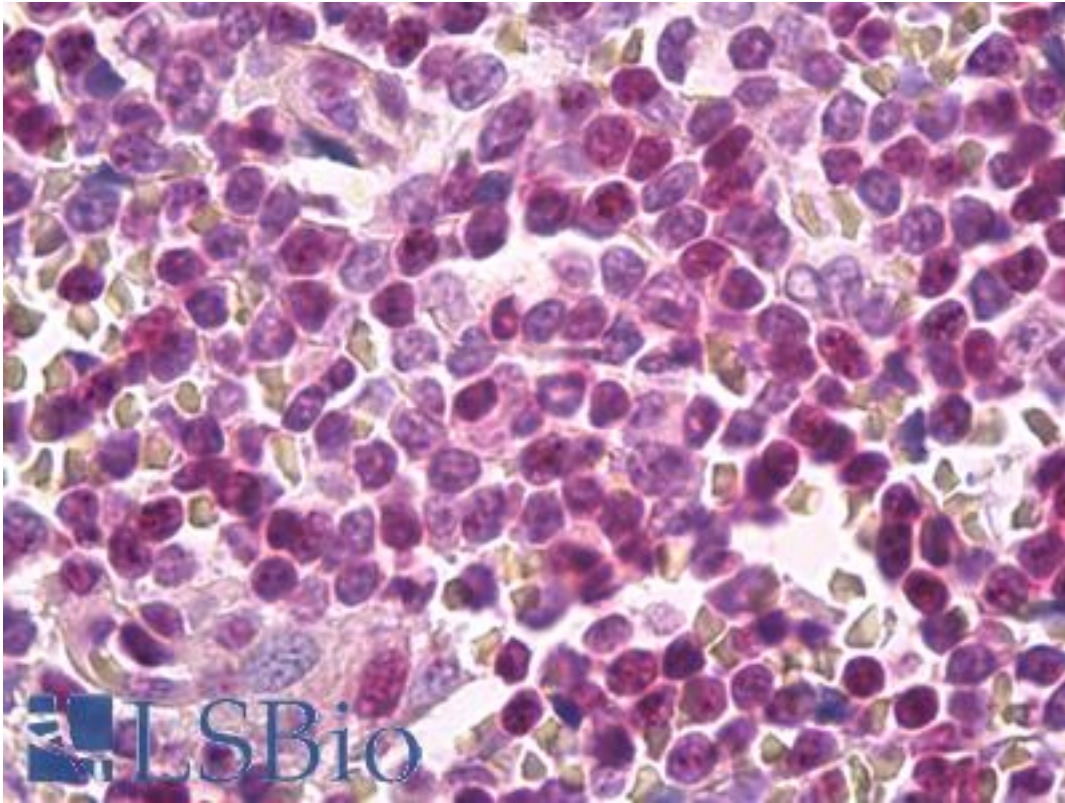


CKS1B / CKS1 Rabbit anti-Human Polyclonal (C-Terminus) Antibody - LS-B8108 - LSBio	
CatalogID:	LS-B8108
Validation:	This antibody replaces catalog number LS-C14497. It has been validated for use in the following assays: IHC-P.
Target:	CDC28 protein kinase regulatory subunit 1B (CKS1B)
Synonyms:	CKS1B Antibody, CDC28 protein kinase 1 Antibody, CKS-1 Antibody, CDC28 protein kinase 1B Antibody, Ckshs1 Antibody, PNAS-18 Antibody, PNAS-143 Antibody, PNAS-16 Antibody, CDC2-associated protein CKS1 Antibody, CKS1 Antibody
Host	CKS1B antibody was produced in Rabbit
Clonality:	Polyclonal
Immunogen Species:	CKS1B / CKS1 antibody was raised against Human
Antigen Type:	Synthetic peptide
Immunogen:	CKS1B / CKS1 antibody was raised against synthetic peptide derived from the C-terminal region of human and mouse Cks1.
Specificity:	Reacts with the human Cks1 protein. On Western blots, it identifies a single band at ~11kD. Bands of unknown origin at ~20, 30 and 100kD are also observed. Reactivity has been confirmed with HeLa cell lysates by Western blotting, immunofluorescence and immunoprecipitation, and with non-small cell lung carcinoma tissue by immunohistochemistry. Western blotting with purified Cks1 and Cks2 proteins was used to confirm that this antibody does not cross-react with Cks2. Cross-reactivity with mouse is expected based upon amino acid sequence homology.
Epitope:	C-Terminus
Reactivity:	Human
Purification:	Immunoaffinity purified
Presentation:	PBS, pH 7.4, 0.1% sodium azide.
Recommended Storage:	Long term: -20°C; Short term: +4°C. Avoid repeat freeze-thaw cycles.
Usage Summary:	Suitable for use in ELISA, Western Blot, Immunofluorescence, Immunoprecipitation and Immunohistochemistry. ELISA: 0.1-1 ug/ml. Western Blot: 1-3 ug/ml. Immunofluorescence: 10 ug/ml. Immunoprecipitation: 7 ug/IP reaction. Immunohistochemistry: 2.5 ug/ml. Note: For immunohistochemistry with formalin-fixed, paraffin-embedded tissues, Heat Induced Epitope Retrieval (HIER) with citrate buffer, pH 6.0, is recommended.
Uses:	IHC - Paraffin (5 µg/ml), Immunofluorescence (10 µg/ml), Western blot (1 - 3 µg/ml), Immunoprecipitation, ELISA (0.1 - 1 µg/ml) (Optimal dilution to be determined by the researcher)
Size:	50 µg
Concentration:	0.25 mg/ml

Immunohistochemistry Image:



Anti-CKS1 antibody IHC of human spleen. Immunohistochemistry of formalin-fixed, paraffin-embedded tissue after heat-induced antigen retrieval. Antibody LS-B8108 dilution 5 ug/ml.

Requested From:

Japan

Laboratory Reagent For In Vitro Research Use Only

Not for resale without prior written consent from LifeSpan BioSciences, Inc.

Created on 9/24/2014

© 2014 LifeSpan BioSciences