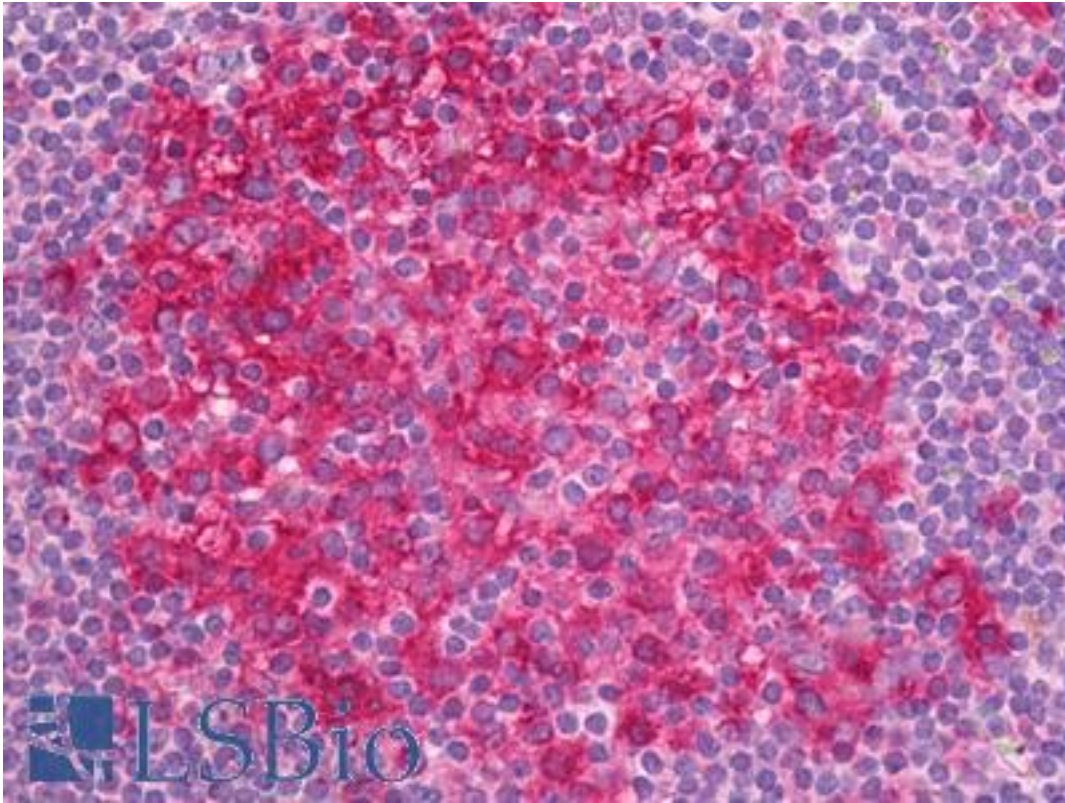


Alpha Tubulin Mouse anti-Pig Monoclonal (N-Terminus) (FITC) (TU-01) Antibody - LS-B8058 - LSBio

CatalogID:	LS-B8058
Validation:	This antibody replaces catalog number LS-C46368. It has been validated for use in the following assays: IHC-P.
Target:	Tubulin Alpha
Host	Tubulin Alpha antibody was produced in Mouse
Clonality:	Monoclonal
Isotype:	IgG1
Clone Name:	TU-01
Conjugations:	Fluorescein (FITC)
Immunogen Species:	Alpha Tubulin antibody was raised against Pig
Immunogen:	Alpha Tubulin antibody was raised against fraction of tubulin purified from porcine brain by two cycles of polymerization-depolymerization.
Specificity:	Recognizes the defined epitope (aa 65-97) on N-terminal structural domain of alpha-tubulin
Epitope:	N-Terminus
Reactivity:	Pig, Human
Purification:	Precipitation
Presentation:	PBS, 15 mM sodium azide, approx., pH 7.4.
Recommended Storage:	Short term 4°C, long term aliquot and store at -20°C, avoid freeze thaw cycles. Store undiluted.
Usage Summary:	Suggested control tissue for IHC-P is heart.
Uses:	IHC - Paraffin (10 µg/ml), ICC, Western blot (1 - 2 µg/ml) (Optimal dilution to be determined by the researcher)
Size:	50 µg
Concentration:	1 mg/ml

Immunohistochemistry Image:



Anti-Alpha Tubulin antibody IHC of human tonsil, germinal center. Immunohistochemistry of formalin-fixed, paraffin-embedded tissue after heat-induced antigen retrieval. Antibody LS-B8058 dilution 10 ug/ml.

Requested From:

Japan

Laboratory Reagent For In Vitro Research Use Only

Not for resale without prior written consent from LifeSpan BioSciences, Inc.

Created on 9/24/2014

© 2014 LifeSpan BioSciences