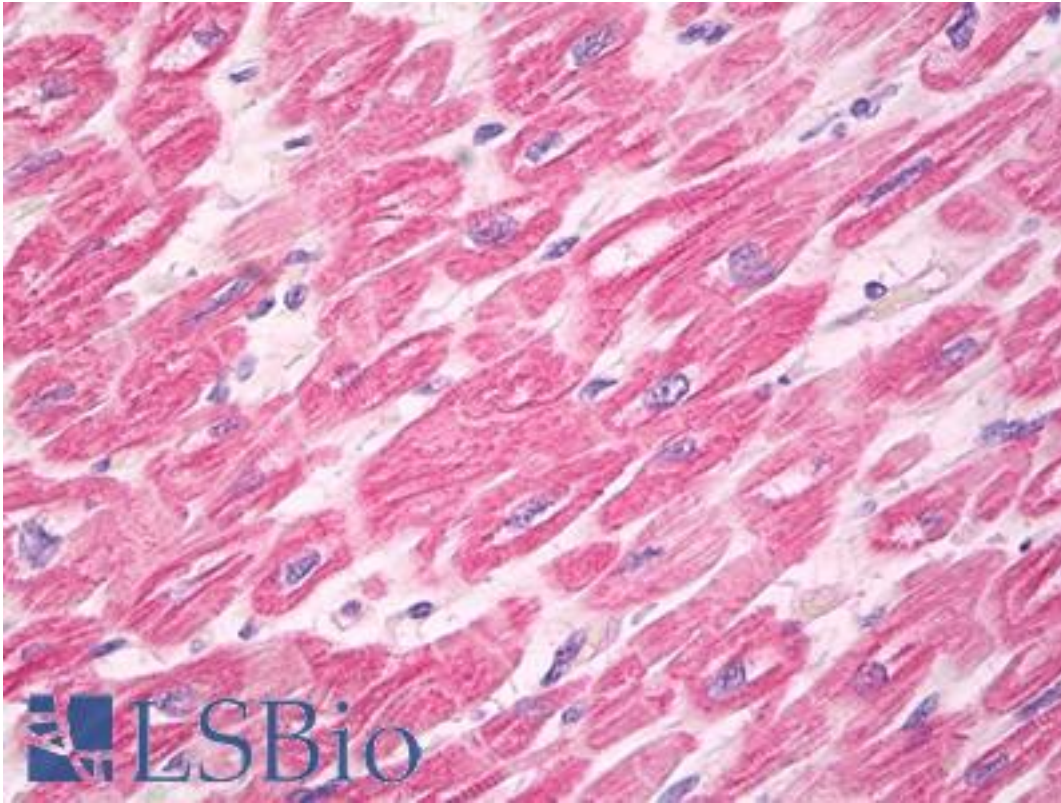


MYL2 Mouse anti-Human Monoclonal (7C9) Antibody - LS-B8057 - LSBio

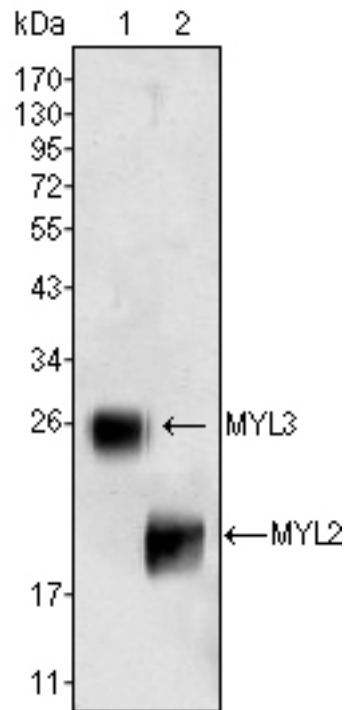
CatalogID:	LS-B8057
Validation:	This antibody replaces catalog number LS-C108842. It has been validated for use in the following assays: IHC-P.
Target:	myosin, light chain 2, regulatory, cardiac, slow (MYL2)
Synonyms:	MYL2 Antibody, MLC2 Antibody, Myosin light chain 2 Antibody, MLC-2 Antibody, RLC of myosin Antibody, CMH10 Antibody, MLC-2v Antibody
Host	MYL2 antibody was produced in Mouse
Clonality:	Monoclonal
Isotype:	IgG1
Clone Name:	7C9
Immunogen Species:	MYL2 antibody was raised against Human
Immunogen:	MYL2 antibody was raised against purified recombinant fragment of MYL2 expressed in E. coli.
Specificity:	Human MYL2
Reactivity:	Human
Purification:	Ascites
Presentation:	Ascites fluid, 0.03% sodium azide
Recommended Storage:	Long term: -20°C; Short term: +4°C. Avoid repeat freeze-thaw cycles.
Uses:	IHC - Paraffin (1:100), Western blot (1:500 - 1:2000), ELISA (1:10000) (Optimal dilution to be determined by the researcher)
Size:	50 µl

Immunohistochemistry Image:



Anti-MYL2 antibody IHC of human heart. Immunohistochemistry of formalin-fixed, paraffin-embedded tissue after heat-induced antigen retrieval. Antibody LS-B8057 dilution 1:100.

Western Blot Image:



Western blot of anti-MYL3 (1) and anti-MYL2 (2) monoclonal antibody against rat fetal heart tissue lysate.

Requested From:

Japan

Laboratory Reagent For In Vitro Research Use Only

Not for resale without prior written consent from LifeSpan BioSciences, Inc.

Created on 9/24/2014

© 2014 LifeSpan BioSciences