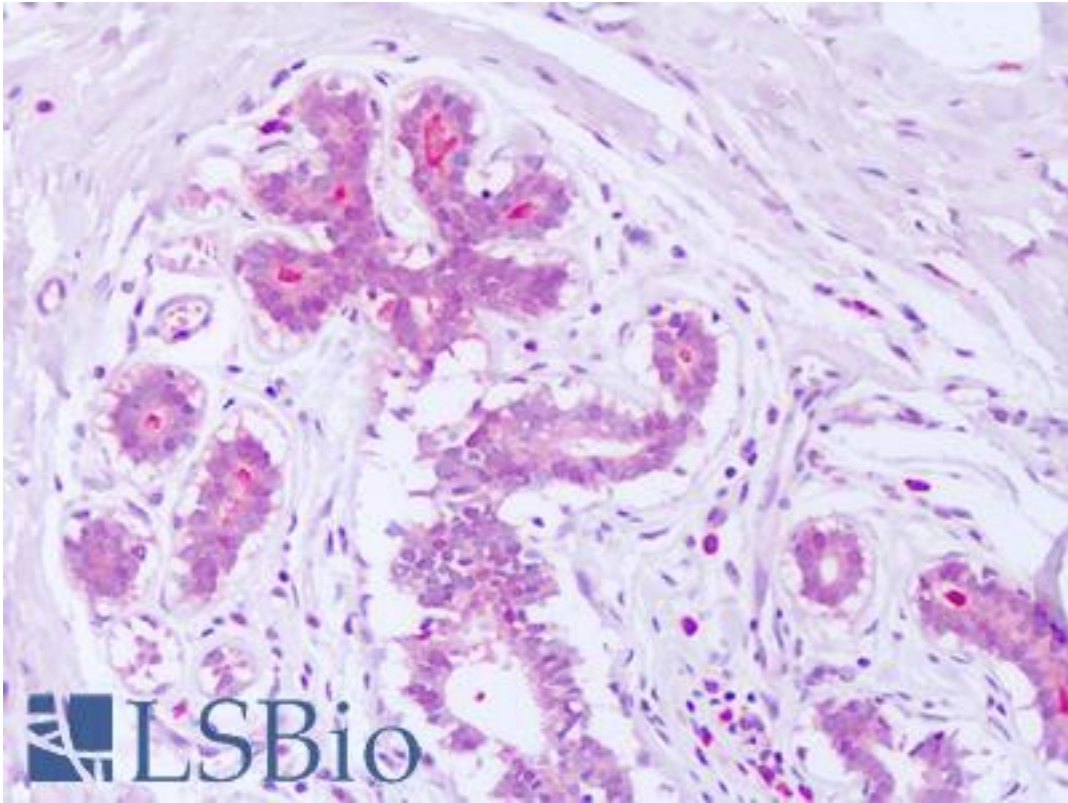


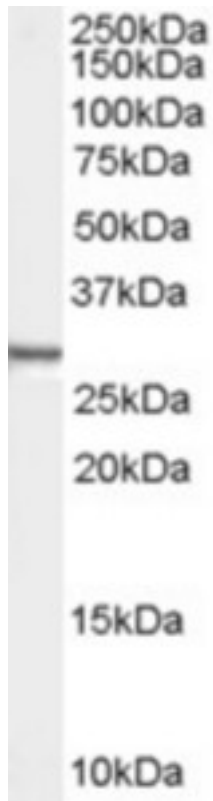
SDCBP / Syntenin Goat anti-Human Polyclonal (N-Terminus) Antibody - LS-B8049 - LSBio	
<b>CatalogID:</b>	LS-B8049
<b>Validation:</b>	This antibody replaces catalog number LS-C55551. It has been validated for use in the following assays: IHC-P.
<b>Target:</b>	syndecan binding protein (syntenin) (SDCBP)
<b>Synonyms:</b>	SDCBP Antibody, Syndecan-binding protein 1 Antibody, MDA-9 Antibody, TACIP18 Antibody, Scaffold protein Pbp1 Antibody, MDA9 Antibody, ST1 Antibody, SYCL Antibody, Syntenin Antibody, Syntenin-1 Antibody
<b>Host</b>	SDCBP antibody was produced in Goat
<b>Clonality:</b>	Polyclonal
<b>Immunogen Species:</b>	SDCBP / Syntenin antibody was raised against Human
<b>Antigen Type:</b>	Synthetic peptide
<b>Immunogen:</b>	SDCBP / Syntenin antibody was raised against synthetic peptide SLEDLKVDKVIQAQ-C from the N-terminus of human SDCBP / Syntenin (NP_005616.2; NP_001007068.1; NP_001007069; NP_001007070.1; NP_001007071.1). Percent identity by BLAST analysis: Human, Gorilla, Orangutan, Gibbon, Monkey, Marmoset, Mouse, Rat, Hamster, Elephant, Bovine, Horse, Pig, Opossum, Turkey, Chicken, Platypus, Lizard, Xenopus (100%); Dog, Rabbit, Zebrafish (93%); Catfish, Salmon, Stickleback (86%).
<b>Specificity:</b>	Human SDCBP / Syntenin. This antibody is expected to recognise isoform 1 (NP_005616.2 and NP_001007068.1) and isoform 3 (NP_001007070.1 and NP_001007071.1) only.
<b>Epitope:</b>	N-Terminus
<b>Reactivity:</b>	Human, Gorilla, Orangutan, Gibbon, Monkey, Mouse, Rat, Bovine, Hamster, Horse, Pig, Chicken, Xenopus
<b>Predicted Reactivity:</b>	Dog, Rabbit, Zebrafish
<b>Purification:</b>	Immunoaffinity purified
<b>Presentation:</b>	Tris-buffered saline, pH 7.3, 0.5% BSA, 0.02% sodium azide
<b>Recommended Storage:</b>	Short term 4°C, long term aliquot and store at -20°C, avoid freeze thaw cycles.
<b>Uses:</b>	IHC - Paraffin (10 µg/ml), Western blot (0.01 - 0.03 µg/ml), ELISA (1:128000) (Optimal dilution to be determined by the researcher)
<b>Size:</b>	50 µg
<b>Concentration:</b>	0.5 mg/ml

**Immunohistochemistry Image:**



Anti-Syntenin antibody IHC of human breast. Immunohistochemistry of formalin-fixed, paraffin-embedded tissue after heat-induced antigen retrieval. Antibody LS-B8049 dilution 10 ug/ml.

**Western Blot Image:**



Antibody (0.01 ug/ml) staining of Human HEK293 cell lysate (35 ug protein in RIPA buffer).  
Primary incubation was 1 hour. Detected by chemiluminescence.

**Requested From:**

Japan

Laboratory Reagent For In Vitro Research Use Only

Not for resale without prior written consent from LifeSpan BioSciences, Inc.

Created on 9/24/2014

© 2014 LifeSpan BioSciences