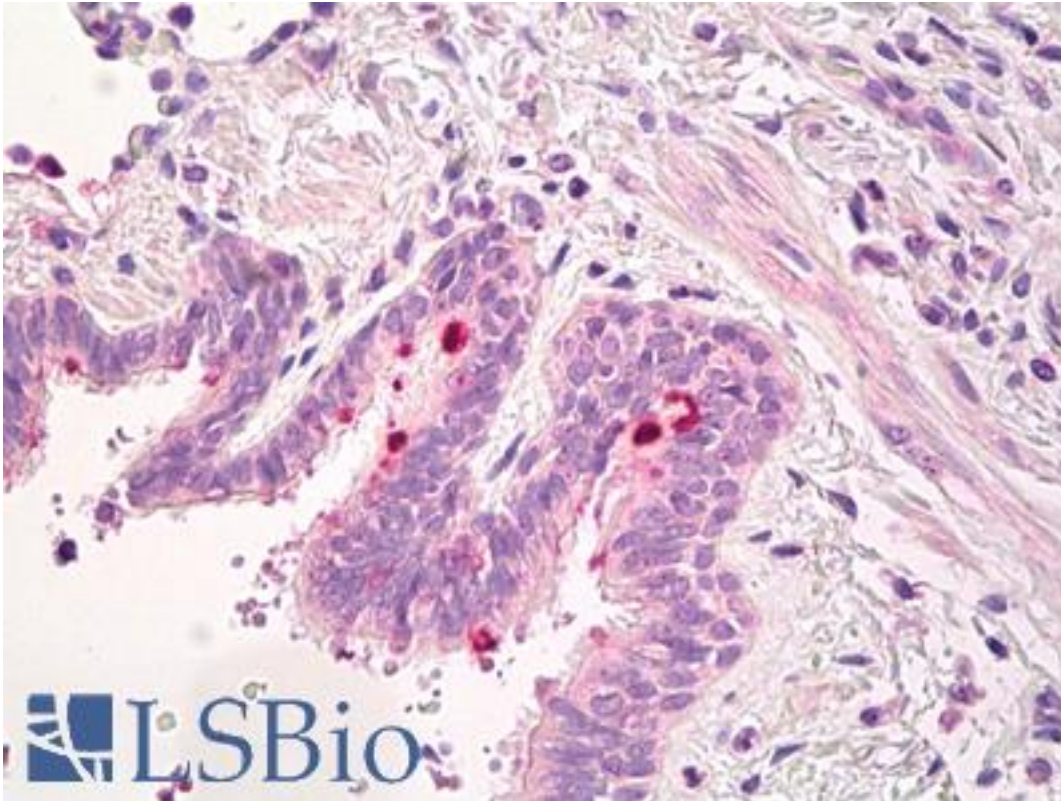


EMR2 Mouse anti-Human Monoclonal Antibody - LS-B8033 - LSBio	
CatalogID:	LS-B8033
Validation:	This antibody replaces catalog number LS-C5840. It has been validated for use in the following assays: IHC-P.
Target:	egf-like module containing, mucin-like, hormone receptor-like 2 (EMR2)
Synonyms:	EMR2 Antibody, CD312 antigen Antibody, EGF-like module receptor 2 Antibody, CD312 Antibody
Family / Subfamily:	GPCR / Orphan-B
Host	EMR2 antibody was produced in Mouse
Clonality:	Monoclonal
Isotype:	IgG1
Immunogen Species:	EMR2 antibody was raised against Human
Antigen Type:	Cells
Immunogen:	EMR2 antibody was raised against nIH-3T3 cells stably transfected with EMR2 (EGF1-5) cDNA.
Specificity:	Recognizes human EMR2. This clone specifically recognizes the stalk region of EMR2.
Reactivity:	Human
Purification:	Protein G purified
Presentation:	PBS, pH 7.4, 1% BSA, 0.09% sodium azide, 40% glycerol.
Recommended Storage:	Long term: -20°C; Short term: +4°C; Avoid freeze-thaw cycles.
Usage Summary:	Suitable for use in Flow Cytometry, Immunohistochemistry (frozen and paraffin-embedded), Immunoprecipitation and Western Blot. Flow Cytometry: 1:25-1:100. Use 10 ul of the suggested working dilution to label 10 ⁶ cells in 100ul.
Uses:	IHC - Paraffin (10 µg/ml), IHC - Frozen, Western blot, Immunoprecipitation, Flow Cytometry (1:25 - 1:100) (Optimal dilution to be determined by the researcher)
Size:	50 µg
Concentration:	0.5 mg/ml

Immunohistochemistry Image:



Anti-EMR2 antibody IHC of human lung, respiratory epithelium. Immunohistochemistry of formalin-fixed, paraffin-embedded tissue after heat-induced antigen retrieval. Antibody LS-B8033 dilution 10 ug/ml.

Requested From:

Japan

Laboratory Reagent For In Vitro Research Use Only

Not for resale without prior written consent from LifeSpan BioSciences, Inc.

Created on 9/24/2014

© 2014 LifeSpan BioSciences