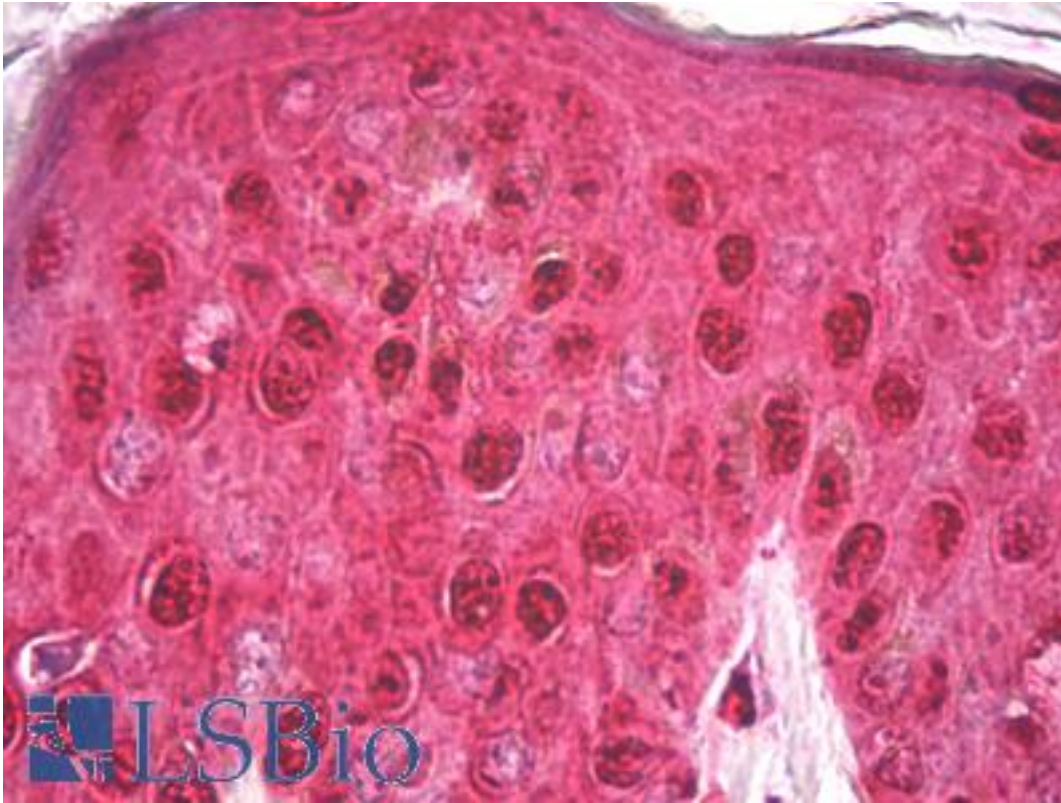


GAPDH Mouse anti-Human Monoclonal (4G5) Antibody - LS-B8020 - LSBio	
CatalogID:	LS-B8020
Validation:	This antibody replaces catalog number LS-C123627. It has been validated for use in the following assays: IHC-P.
Target:	glyceraldehyde-3-phosphate dehydrogenase (GAPDH)
Synonyms:	GAPDH Antibody, A1 40 kd subunit Antibody, Activator 1 40 kd subunit Antibody, G3PD Antibody, GAPD Antibody, G3pdh Antibody, Rfc40 Antibody, Rf-c 40 kd subunit Antibody
Host	GAPDH antibody was produced in Mouse
Clonality:	Monoclonal
Isotype:	IgG1
Clone Name:	4G5
Immunogen Species:	GAPDH antibody was raised against Human
Immunogen:	GAPDH antibody was raised against human cardiac muscle GAPDH.
Specificity:	Recognizes human glyceraldehyde-3-phosphate dehydrogenase (GAPDH) at 36kD. Species cross-reactivity: bovine, pig, goat, feline, rat, mouse, canine, rabbit, fish.
Reactivity:	Human, Mouse, Rat, Bovine, Cat, Dog, Goat, Pig, Rabbit, Fish
Purification:	Protein A purified
Presentation:	PBS, pH 7.4, 0.09% sodium azide
Recommended Storage:	May be stored at 4°C for short-term only. Aliquot to avoid repeated freezing and thawing. Store at -20°C. Aliquots are stable for at least 12months.
Usage Summary:	Suitable for use in Immunofluorescence, ELISA, Western Blot, Immunoprecipitation, Immunohistochemistry.
Uses:	IHC - Paraffin (10 µg/ml), Immunofluorescence, Western blot, Immunoprecipitation, ELISA (Optimal dilution to be determined by the researcher)
Size:	50 µg
Concentration:	1 mg/ml

Immunohistochemistry Image:



Anti-GAPDH antibody IHC of human skin. Immunohistochemistry of formalin-fixed, paraffin-embedded tissue after heat-induced antigen retrieval. Antibody LS-B8020 dilution 10 ug/ml.

Requested From:

Japan

Laboratory Reagent For In Vitro Research Use Only

Not for resale without prior written consent from LifeSpan BioSciences, Inc.

Created on 9/24/2014

© 2014 LifeSpan BioSciences