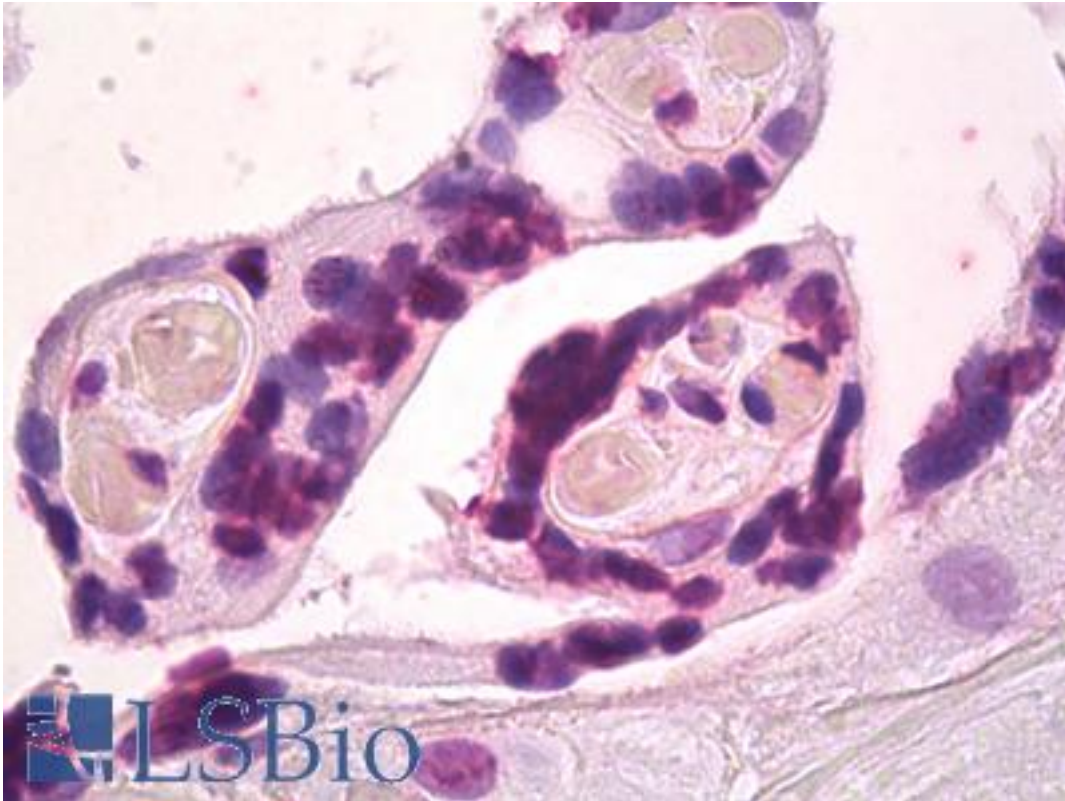


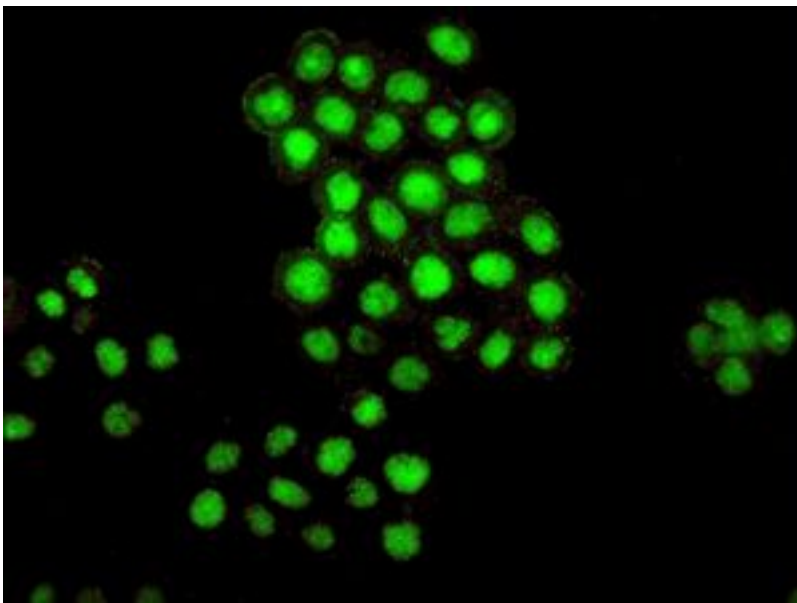
BMI1 / PCGF4 Rabbit anti-Human Monoclonal (Internal) (EPR3745(2)) Antibody - LS-B8010 - LSBio	
CatalogID:	LS-B8010
Validation:	This antibody replaces catalog number LS-C152396. It has been validated for use in the following assays: IHC-P.
Target:	BMI1 polycomb ring finger oncogene
Synonyms:	BMI1 Antibody, BMI-1 Antibody, Flvi-2/bmi-1 Antibody, FLVI2/BMI1 Antibody, PCGF4 Antibody, Polycomb group protein Bmi1 Antibody, Polycomb complex protein BMI-1 Antibody, Dna-binding protein bmi-1 Antibody, Polycomb group ring finger 4 Antibody, RING finger protein 51 Antibody, RNF51 Antibody
Host	BMI1 antibody was produced in Rabbit
Clonality:	Monoclonal
Isotype:	IgG
Clone Name:	EPR3745(2)
Immunogen Species:	BMI1 / PCGF4 antibody was raised against Human
Antigen Type:	Synthetic peptide
Immunogen:	BMI1 / PCGF4 antibody was raised against a synthetic peptide corresponding to residues in human BMI-1 was used as an immunogen.
Specificity:	Human BMI-1. Species cross-reactivity is based on WB analysis.
Epitope:	Internal
Reactivity:	Human, Rat
Purification:	Tissue culture supernatant
Presentation:	Tris-Glycine-NaCl or PBS, pH 7.2-7.4, 40-50% Glycerol, 0.01% sodium azide, 0.05% BSA
Recommended Storage:	Short term 4°C, long term aliquot and store at -20°C, avoid freeze thaw cycles.
Uses:	IHC - Paraffin (1:50), ICC (1:100 - 1:250), Immunofluorescence (1:250), Western blot (1:10000 - 1:50000) (Optimal dilution to be determined by the researcher)
Size:	50 µl

Immunohistochemistry Image:



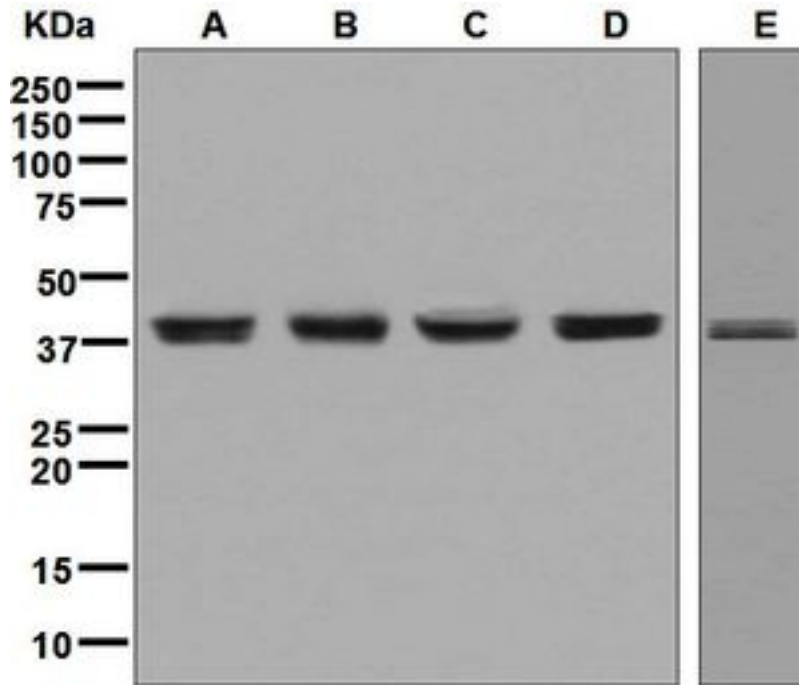
Anti-BMI-1 antibody IHC of human placenta. Immunohistochemistry of formalin-fixed, paraffin-embedded tissue after heat-induced antigen retrieval. Antibody LS-B8010 dilution 1:50.

Immunofluorescence Image:



Immunofluorescent staining of SW480 cells using anti-BMI-1 antibody.

Western Blot Image:



Western blot analysis on (A) K562, (B) Saos-2, (C) SW480, (D) Molt-4, and (E) HT-1080 cell lysates using anti-BMI-1 antibody.

Requested From:

Japan

Laboratory Reagent For In Vitro Research Use Only

Not for resale without prior written consent from LifeSpan BioSciences, Inc.

Created on 9/24/2014

© 2014 LifeSpan BioSciences