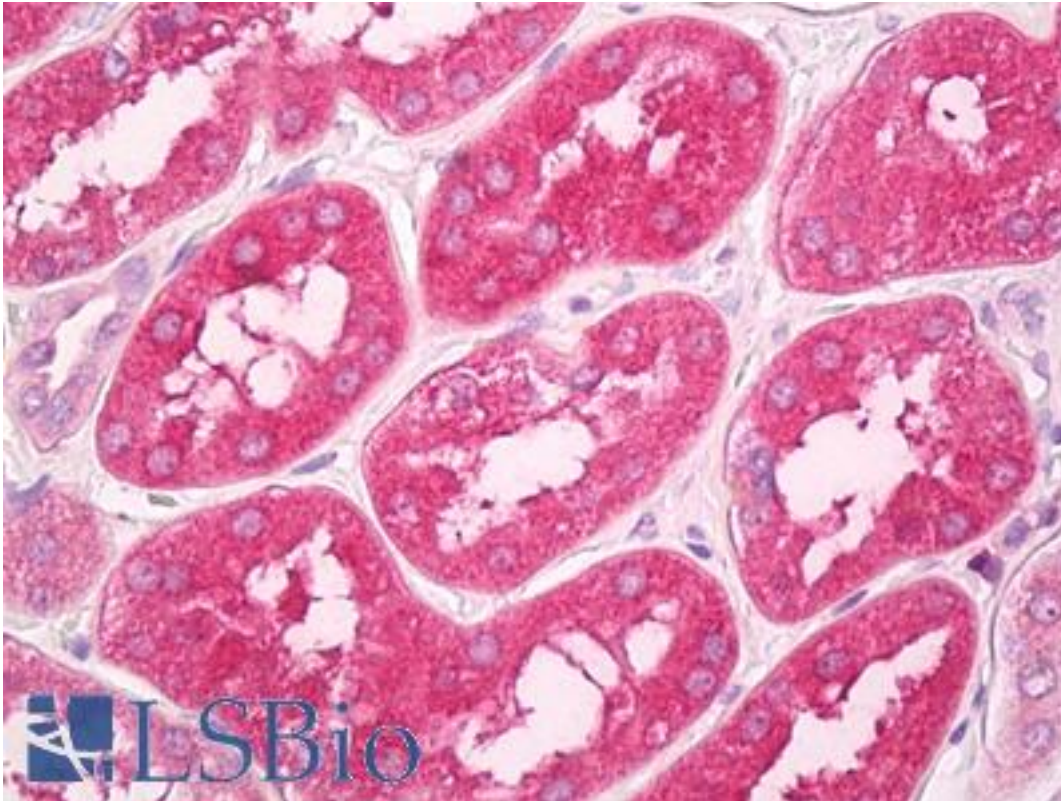


GNPDA1 Rabbit anti-Human Polyclonal (aa100-150) Antibody - LS-B8009 - LSBio

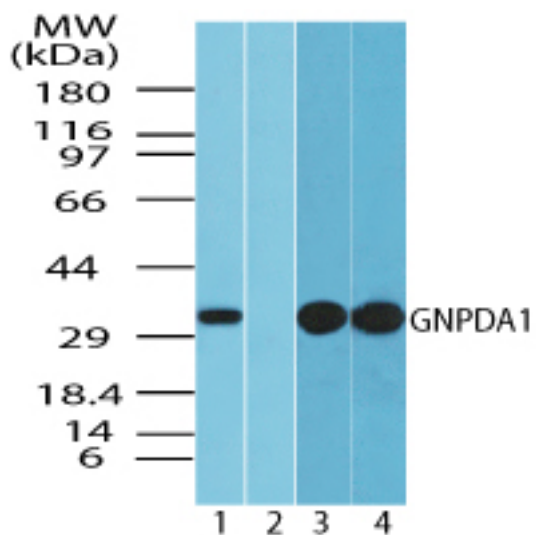
CatalogID:	LS-B8009
Validation:	This antibody replaces catalog number LS-C148426. It has been validated for use in the following assays: IHC-P.
Target:	glucosamine-6-phosphate deaminase 1 (GNPDA1)
Synonyms:	GNPDA1 Antibody, GNPDA Antibody, GNPDA 1 Antibody, GNP1 Antibody, HLN Antibody, GlcN6P deaminase 1 Antibody, GNPI Antibody, KIAA0060 Antibody, Oscillin Antibody
Host	GNPDA1 antibody was produced in Rabbit
Clonality:	Polyclonal
Isotype:	IgG
Immunogen Species:	GNPDA1 antibody was raised against Human
Antigen Type:	Synthetic peptide
Immunogen:	GNPDA1 antibody was raised against a portion of amino acids 100-150 of human GNPDA1 was used as the immunogen.
Specificity:	Human GNPDA1
Epitope:	aa100-150
Reactivity:	Human, Mouse, Rat
Purification:	Protein A purified
Presentation:	PBS, 0.05% BSA, 0.05% sodium azide
Recommended Storage:	Store at 4°C for short term applications. For long term storage, aliquot and store at -20°C.
Uses:	IHC - Paraffin (10 µg/ml), Western blot (0.5 - 1 µg/ml) (Optimal dilution to be determined by the researcher)
Size:	50 µg
Concentration:	0.5 mg/ml

Immunohistochemistry Image:



Anti-GNPDA1 antibody IHC of human kidney. Immunohistochemistry of formalin-fixed, paraffin-embedded tissue after heat-induced antigen retrieval. Antibody LS-B8009 dilution 10 ug/ml.

Western Blot Image:



Western blot of GNPDA1 in human spleen lysate in the 1) absence and 2) presence of immunizing peptide 3) mouse spleen and 4) rat spleen using LS-B8009 at 1.0 ug/ml, 0.5 ug/ml and 0.5 ug/ml, respectively.

Requested From:

Japan

Laboratory Reagent For In Vitro Research Use Only

Not for resale without prior written consent from LifeSpan BioSciences, Inc.

Created on 9/24/2014

© 2014 LifeSpan BioSciences