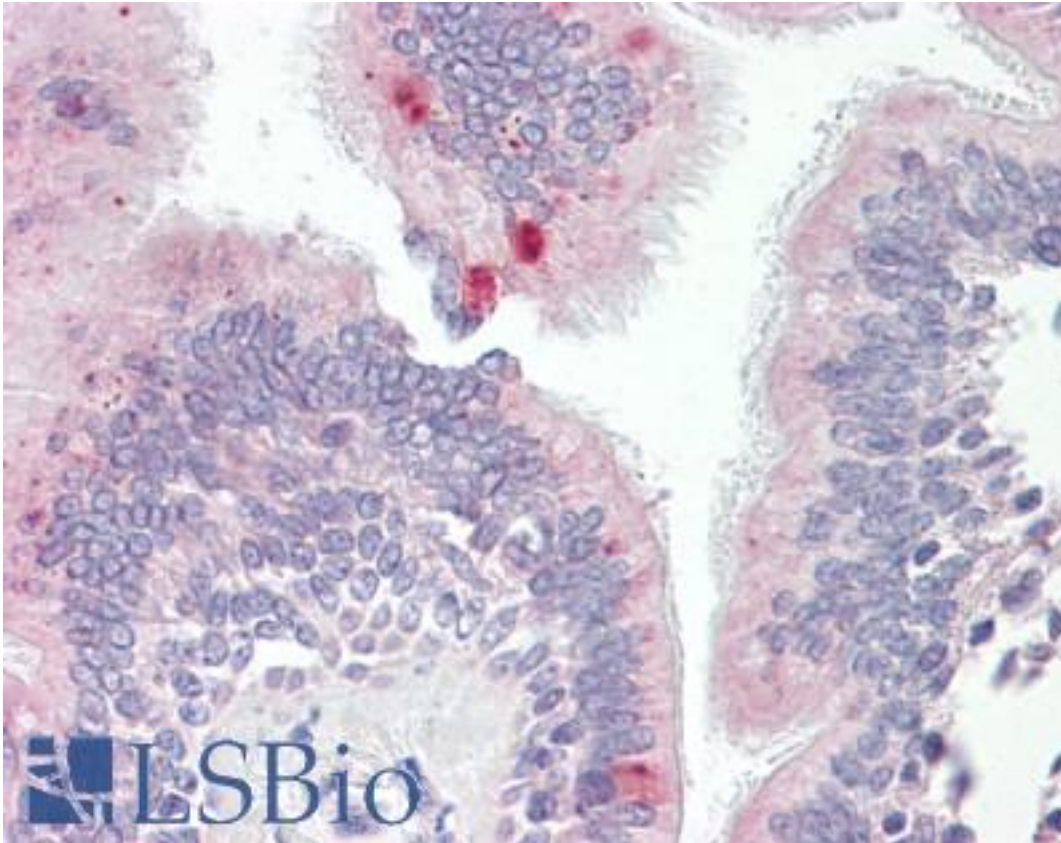


AP3M1 Rabbit anti-Human Polyclonal (aa140-190) Antibody - LS-B8008 - LSBio	
CatalogID:	LS-B8008
Validation:	This antibody replaces catalog number LS-C148816. It has been validated for use in the following assays: IHC-P.
Target:	Adaptor-related Protein Complex 3, Mu 1 Subunit (AP3M1)
Synonyms:	AP3M1 Antibody, AP-3 complex subunit mu-1 Antibody, Mu3A-adaptin Antibody, Mu-adaptin 3A Antibody
Host	AP3M1 antibody was produced in Rabbit
Clonality:	Polyclonal
Immunogen Species:	AP3M1 antibody was raised against Human
Antigen Type:	Synthetic peptide
Immunogen:	AP3M1 antibody was raised against amino acids 140-190 of human AP3 subunit M1.
Specificity:	Human AP3M1
Epitope:	aa140-190
Reactivity:	Human, Bovine, Dog, Hamster, Horse, Chicken
Purification:	Protein A purified
Presentation:	PBS, 0.05% BSA, 0.05% sodium azide
Recommended Storage:	Store at 4°C, stable for 6 months. For long term storage, aliquot and store at -20°C.
Uses:	IHC - Paraffin (10 µg/ml), Western blot (3 - 5 µg/ml) (Optimal dilution to be determined by the researcher)
Size:	50 µg
Concentration:	0.5 mg/ml

Immunohistochemistry Image:



Anti-AP3M1 antibody IHC of human lung, respiratory epithelium. Immunohistochemistry of formalin-fixed, paraffin-embedded tissue after heat-induced antigen retrieval. Antibody LS-B8008 dilution 10 ug/ml.

Requested From:

Japan

Laboratory Reagent For In Vitro Research Use Only

Not for resale without prior written consent from LifeSpan BioSciences, Inc.

Created on 9/24/2014

© 2014 LifeSpan BioSciences